

Supplementary material

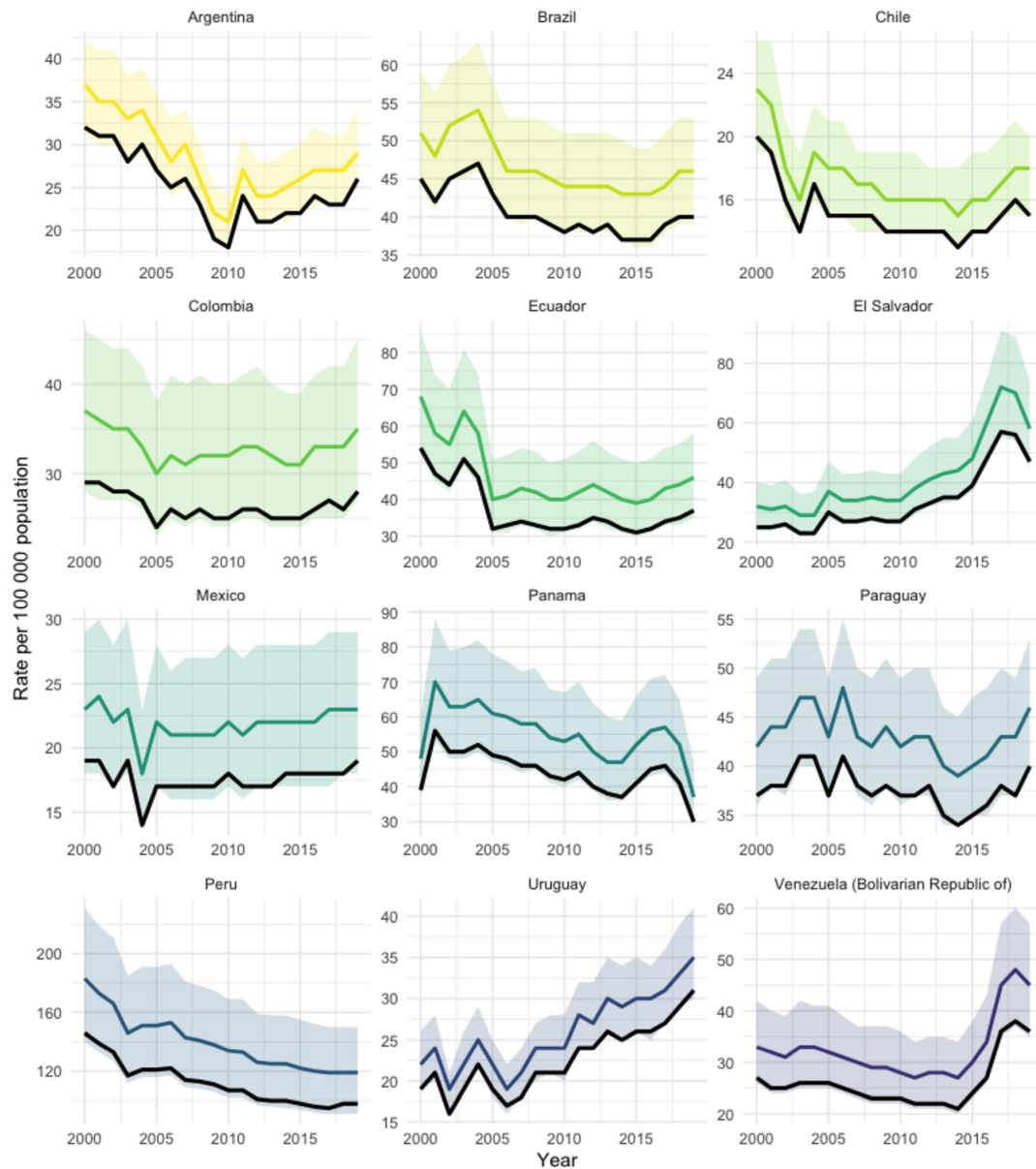
Increasing Tuberculosis burden in Latin America: an alarming trend for global TB control efforts

eFigure 1. Estimated incidence of tuberculosis between WHO Regions between 2000 to 2019



* Figure built with the `plot_tb_burden_summary` function from the package `getTBinR`

eFigure 2. Estimated incidence of tuberculosis and case notification among 12 countries from Latin America between 2000 to 2019



Coloured lines: Estimated tuberculosis incidence (all forms), shadow represents 95% confidence intervals. Black lines: Tuberculosis case notification