

### Excess Deaths reveal unequal impact of COVID-19 in Ecuador

#### Supplement

#### S1 Excess Death Factor by province

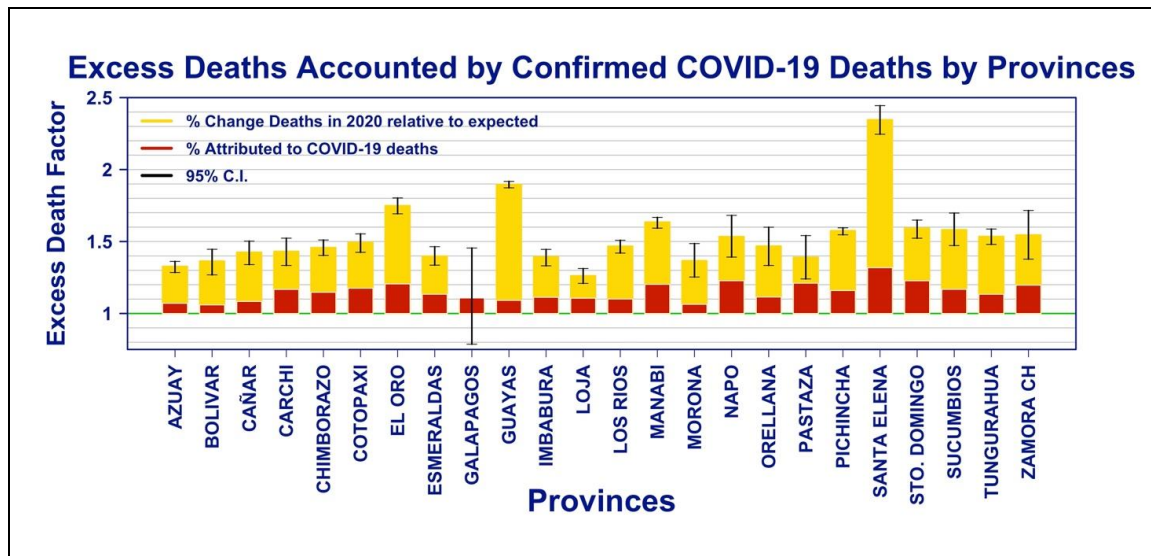
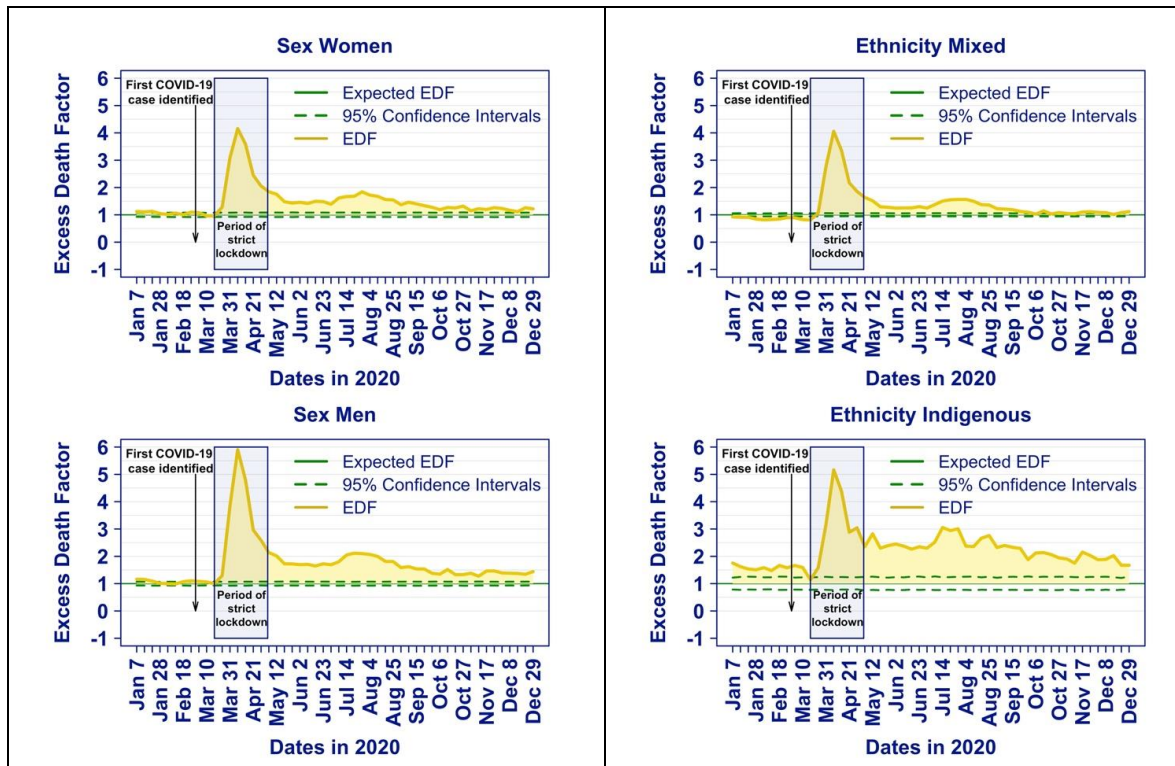


Figure S1 Excess Death Factor Accounted by Confirmed COVID-19 deaths by province

## S2. Time Series of Weekly Excess Death Factor by Sex, Ethnicity, and Age Group



**Figure S2.** Time series of excess death factor (ratio observed and expected deaths) by sex and ethnic group in 2020.

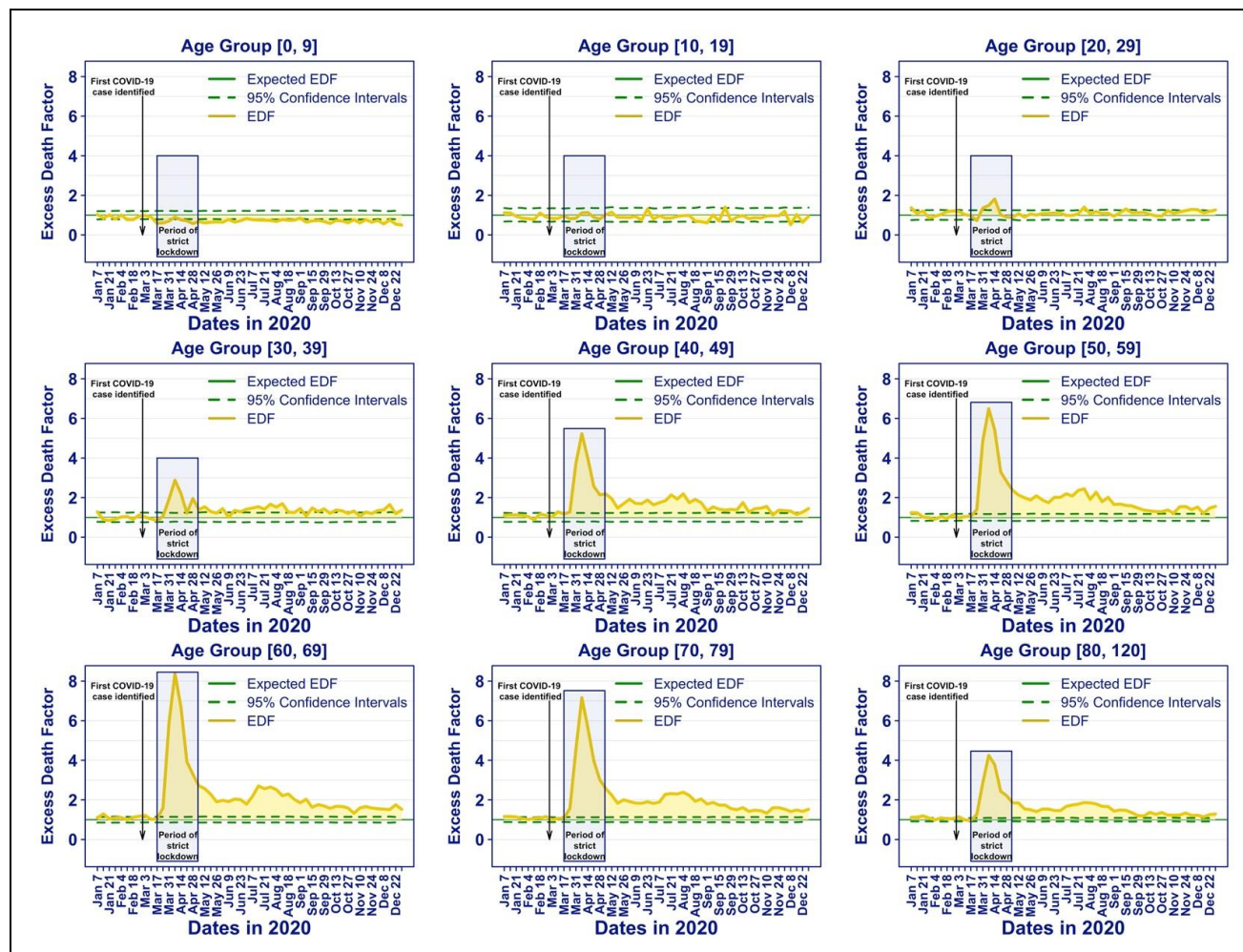


Figure S3. Time series of excess death factor (ratio observed and expected deaths) by age group in 2020.