


# The impact of cash transfers on mental health in children and young people in low-income and middle-income countries: a systematic review and meta-analysis

Annie Zimmerman ,<sup>1,2</sup> Emily Garman,<sup>3</sup> Mauricio Avendano-Pabon,<sup>2,4</sup> Ricardo Araya,<sup>1</sup> Sara Evans-Lacko,<sup>5</sup> David McDaid,<sup>5</sup> A-La Park,<sup>5</sup> Philipp Hessel,<sup>6</sup> Yadira Diaz,<sup>6</sup> Alicia Matijasevich,<sup>7</sup> Carola Ziebold,<sup>7</sup> Annette Bauer,<sup>5</sup> Cristiane Silvestre Paula,<sup>8</sup> Crick Lund<sup>1,3</sup>

**To cite:** Zimmerman A, Garman E, Avendano-Pabon M, *et al*. The impact of cash transfers on mental health in children and young people in low-income and middle-income countries: a systematic review and meta-analysis. *BMJ Global Health* 2021;**6**:e004661. doi:10.1136/bmjgh-2020-004661

**Handling editor** Seye Abimbola

► Additional material is published online only. To view, please visit the journal online (<http://dx.doi.org/10.1136/bmjgh-2020-004661>).

Received 4 December 2020  
Revised 5 February 2021  
Accepted 10 February 2021



© Author(s) (or their employer(s)) 2021. Re-use permitted under CC BY-NC. No commercial re-use. See rights and permissions. Published by BMJ.

For numbered affiliations see end of article.

## Correspondence to

Dr Annie Zimmerman;  
annie.zimmerman@kcl.ac.uk

## ABSTRACT

**Introduction** Although cash transfer programmes are not explicitly designed to improve mental health, by reducing poverty and improving the life chances of children and young people, they may also improve their mental health. This systematic review and meta-analysis assessed the evidence on the effectiveness of cash transfers to improve the mental health of children and young people in low-income and middle-income countries.

**Methods** We searched Pubmed, EBSCOhost, Scientific Electronic Library Online, ISI Web of Science and Social Sciences Citation Index and grey literature (from January 2000 to July 2020) for studies which quantitatively assessed the impact of cash transfers on mental health in young people (aged 0–24 years), using a design that incorporated a control group. We extracted Cohen's d effects size and used a random-effects model for the meta-analysis on studies that measured depressive symptoms, I<sup>2</sup> statistic and assessment of study quality.

**Results** We identified 12 116 articles for screening, of which 12 were included in the systematic review (covering 13 interventions) and seven in the meta-analysis assessing impact on depressive symptoms specifically. There was high heterogeneity (I<sup>2</sup>=95.2) and a high risk of bias (0.38, 95% CIs: −5.08 to 5.85; p=0.86) across studies. Eleven interventions (85%) showed a significant positive impact of cash transfers on at least one mental health outcome in children and young people. However, no study found a positive effect on all mental health outcomes examined, and the meta-analysis showed no impact of cash transfers on depressive symptoms (0.02, 95% CIs: −0.19 to 0.23; p=0.85).

**Conclusion** Cash transfers may have positive effects on some mental health outcomes for young people, with no negative effects identified. However, there is high heterogeneity across studies, with some interventions showing no effects. Our review highlights how the effect of cash transfers may vary by social and economic context, culture, design, conditionality and mental health outcome.

## Key questions

### What is already known?

- Poverty increases vulnerability to mental health problems in children and young people in low-income and middle-income countries.
- Prior reviews have examined the impact of cash transfers on the mental health of adults, but none have specifically considered a broad range of mental health outcomes in children and young people.

### What are the new findings?

- This review, which focused on children and young people, shows that cash transfers may positively impact mental health, with no evidence of negative effects on mental health.
- There was significant heterogeneity across studies and mental health outcomes.

### What do the new findings imply?

- The heterogeneity found across studies suggests that the effects of cash transfers are likely to depend on the social, cultural and economic context in which they are implemented, as well as on their design and the role of conditionality.
- There is a need for high-quality randomised controlled trials that assess the impact of poverty reduction interventions on mental health in children and young people.

## INTRODUCTION

Poverty, defined based on a range of social and economic indicators that capture multiple forms of deprivation,<sup>1 2</sup> affects approximately 663 million<sup>3</sup> children and young people in low/middle-income countries (LMICs), with potential detrimental effects on their physical and mental health.<sup>4–8</sup> Existing frameworks suggest that there is a 'vicious cycle'

whereby poverty increases the risk of mental illness, while mental illness increases the risk of future poverty.<sup>9</sup> Since the late 1990s, cash transfer programmes emerged as a promising approach to reduce poverty, by providing financial resources to alleviate poverty in households, while at the same time stimulating behavioural change and human capital investment.<sup>10–12</sup> Cash transfers may be unconditional, which refer to money transfers without any actions required from beneficiaries; or conditional, where money is transferred to beneficiaries that meet specific behavioural requirements. As both conditional and unconditional cash transfer programmes became widespread in many LMICs,<sup>13</sup> studies have been conducted to examine their effects on multiple outcomes, such as education, health and nutrition, with some studies showing positive effects,<sup>10 12</sup> while others show null or negative effects.<sup>14 15</sup>

Cash transfer programmes aim to improve outcomes associated with poverty, such as education, health and nutrition.<sup>10 16</sup> Although not explicitly designed to improve mental health, there are several mechanisms through which they may also impact the mental health of children and young people living in poverty. Cash transfers increase household income and may thus directly reduce financial strain and increase economic security. They may reduce family conflict associated with poverty and financial stress, thus reducing mental health risks for all family members. Cash transfers may also reduce child labour and related exposures that place young people at risk of mental health disorders. On the other hand, these programmes often involve relatively small cash benefits, which may be insufficient to generate changes in mental health. Improvements in the financial situation of the household may not translate into quality of life improvements for children and young people, thus having limited effects on their mental health. In addition, conditional cash transfers may increase family stress associated with the pressure to meet conditionalities.

Studies on the impact of cash transfers have typically focused on key targeted outcomes such as educational attainment and healthcare use.<sup>10 16</sup> Only recently, studies have started to examine the impact of cash transfers on mental health, but the evidence has so far been mixed.<sup>8 17 18</sup> While some studies suggest that conditional cash transfers increase psychological distress,<sup>19</sup> other studies suggest that they may have positive effects on mental health,<sup>20</sup> by increasing social support, reducing exposure to domestic violence and improving physical health. Few studies have assessed their impact on the mental health of children and young people (ages 0–24 years), with most studies focusing on adults.<sup>21</sup> Focusing on young people is important because most mental health problems have their origin in adolescence or early adulthood.<sup>22</sup> In addition, an extensive literature suggests that mental health problems during adolescence may have profound negative impacts on their educational, social and economic outcomes as they reach adulthood.<sup>23 24</sup> Therefore, cash transfers during this period may be critical to breaking

the cycle of poverty and mental health that emerges later in life.

A review by Lund and colleagues in 2011<sup>18</sup> identified only five studies from 2007 to 2009 and concluded that their effect on mental health was mixed. Pega and colleagues concluded that there was insufficient evidence to state that unconditional cash transfers had an impact on depression among children and adults in LMICs.<sup>25</sup> However, this review was restricted to studies that measured depressive symptoms only and had the main goal to assess broader results on health services use and health outcomes, rather than mental health specifically. In a recent review of 37 studies, McGuire and colleagues<sup>26</sup> reported a positive impact of cash transfers on mental health and well-being, while Ridley and colleagues<sup>9</sup> reported positive effects on mental health in a review of 12 cash transfer studies. However, these reviews focused mostly on adults, and no recent review has focused on children and young people in LMICs.

This systematic review and meta-analysis was conducted as part of the CHANCES-6 study, which focuses on understanding the relationship between poverty interventions, mental health and the life chances of children and young people in six LMICs.<sup>27</sup> The primary objective of this study was to review the literature on the effect of cash transfers programmes on the mental health of children and young people (0–24 years old) in LMICs. The secondary objective was to understand whether different types of cash transfer programmes have different effects on children and young people's mental health.

## METHODS

This review was conducted according to Preferred Reporting Items for Systematic Reviews and Meta-analyses guidelines,<sup>28</sup> and pre-registered on PROSPERO (CRD42020168227).

### Inclusion criteria

Our focus was on quantitative studies that assessed the effect of a cash transfer intervention on mental health outcomes in children and young people. We only included papers that reported interventions taking place in an LMIC, as defined by the World Bank at the time the study was published. Studies were included if published in any language from 2000 to the present, as most cash transfer programmes started in the late 1990s and few studies on their impact on mental health were published before 2000.

### Intervention

Interventions were only deemed appropriate for inclusion if they (a) were 'targeted' anti-poverty interventions, defined as anti-poverty policies that strive to target poor people as the direct beneficiaries to reduce monetary poverty (income or consumption poverty) and/or some dimension of poverty (eg, education, employment or housing materials) and (b) involved a direct cash transfer, such as and including: conditional and unconditional

cash transfers, microfinance, loans, debt management and economic strengthening using matched savings. Saving-led economic strengthening interventions differ from traditional cash transfers in that the amount of money transferred depends on how much participants save, whereas, in traditional cash transfer programmes, families do not have to save any money to receive cash transfers. The money from matched-savings interventions is often a smaller amount compared with cash transfers and is typically directed towards specific purposes such as education and family micro-enterprise development.

### Outcomes measures

Studies were considered if they included a measure of: (a) mental health or well-being from parent-reported or self-report questionnaires; (b) a biomarkers associated with mental health (eg, salivary cortisol measures of stress) or (c) diagnoses of mental health conditions, as defined by the WHO International Classification of disease (ICD-11), from either parent-report or self-report questionnaires or psychiatric diagnosis from a medical professional. Mental health and well-being outcomes included but were not limited to symptoms or diagnoses of: mood disorders; anxiety disorders; post-traumatic stress disorder (PTSD); substance-related disorders; feeding and eating disorders; psychotic disorders; personality disorders; behavioural problems; self-esteem; confidence; resilience; self-efficacy; future outlook and hopefulness. Studies were only included if they provided a direct comparison of mental health outcomes for treatment and control groups or pre-intervention and post intervention outcomes.

### Participants

As this review aimed to assess the effect of cash transfer interventions on the mental health of children, adolescents and young adults, we only included studies that included an estimate of the impact on mental health for those below 25 years. Given the limited literature on the impact of cash transfers on mental health, we wanted to make sure to include all mental health outcomes for all ages of children and young people. We included programmes where children were either direct beneficiaries (ie, programmes targeted to children) or where they were members of a household that received a transfer (ie, household included at least one person receiving a transfer).

### Study design

We included studies that compared cash transfers to an explicit control group, including individual or cluster randomised controlled trials (RCTs) and non-randomised evaluations involving both a control and treatment group. To assess the impact of cash transfers over time, we only included longitudinal studies (with a control group).

### Exclusion criteria

Cross-sectional studies and studies that did not include a control group were excluded. We excluded those that did not provide a statistical comparison of interventions, or pre-intervention and post intervention outcomes for

non-RCTs. We also excluded studies on interventions that did not involve a cash transfer, even if they involved in-kind transfers, such as food or relief nutrition, employment and educational interventions.

### Search strategy

#### Academic databases

We searched published peer-reviewed journal articles and working papers in the following electronic databases from 2000 to the present: Pubmed (Medline and PubMed Cochrane Central), EBSCOhost (Econlit, the Cumulative Index to Nursing and Allied Health Literature, PsycINFO, Africa Wide Information, Medline), the Scientific Electronic Library Online, ISI Web of Science and Social Sciences Citation Index. We used Medical Subject Heading (MeSH) terms or similar thesaurus/indexing terms in databases that do not use MeSH. We also searched using non-MeSH/other index terms, for recent articles without MeSH/other indexing terms yet, and for articles with misspelt MeSH/other indexing terms. An extensive list of all MeSH and non-MeSH search terms for each concept and database included in the final search is detailed in online supplemental material 1. We screened the reference lists of all included studies and contacted authors of included studies and recent relevant systematic reviews<sup>9 25 26</sup> for additional relevant publications.

#### Grey literature and working papers

We conducted a separate structured search through the EconPapers database via Research Papers in Economics that catalogues journal articles and working papers. In addition, we conducted a specific structured search of Google Scholar between 2000 and 2020. The search strategy was based on similar reviews of the effect of cash transfer interventions on health,<sup>12 25 29</sup> and included key terms related to ‘mental disorders’ (including specific disorders, listed above) and ‘mental wellbeing, ‘cash transfer schemes’, ‘low- and middle-income countries’ and ‘randomized controlled trials’.

#### Post hoc backward and forward citation search

In January 2021, following Cochrane standards,<sup>30</sup> we conducted backward and forward citation searches using a manual approach via Google Scholar on all included studies and relevant systematic reviews.<sup>9 25 26</sup> This involved assessing reference lists from all studies, and all papers that have since cited these studies.

### Selection strategy

The screening tool Covidence was used for the screening and management of articles. Two reviewers (AZ and EG) screened study eligibility and irrelevant peer-reviewed articles were excluded based on title and abstract, while DMD and A-LP screened the titles and abstracts generated from the grey literature search. Full-text articles were subsequently reviewed by AZ and EG to determine eligibility for data extraction. Before proceeding to the full-text review and the data extraction stages, any

disagreements on eligibility were discussed and resolved by mutual consent, in consultation with a third author (CL). Reviewers only proceeded to the next stage once 100% agreement was reached. Non-English language papers were only translated after the title and abstract had been tested for inclusion by authors fluent in the language.

Where multiple articles reported data from the same study population, the article with the most comprehensive data was used in the analysis. In cases where the articles reported on the same intervention but with different timeframes or subgroups (eg, by sex or age), all articles were included.

### Data extraction

Data extraction was conducted by two reviewers (AZ and EG) using an adapted version of the Cochrane Public Health Group's data extraction form,<sup>31</sup> which was expanded for the intervention perspective involved in this review. The reviewers checked and resolved all discrepancies between their data extraction forms. Details of data extraction can be found in the online supplemental material 1.

### Assessment of risk of bias

To assess study quality of RCTs, we used the Cochrane Collaboration's 'Risk of Bias' tool.<sup>32</sup> Reviewers judged the overall risk of bias based on a fixed set of domains focusing on different aspects of study design, including selection bias, performance bias, detection bias, attrition bias, reporting bias and other source of bias including misclassification, confounding and reverse causation. Each domain was assigned to have a high, low or unclear risk of bias. The same tool was used for non-RCTs, which were ranked as high risk for selection bias. We used Egger's test to assess publication bias.<sup>33</sup>

### Data analysis and narrative synthesis

First we used narrative synthesis to present a qualitative report on the effect of cash transfer interventions on mental health outcomes in children and young people. We assessed whether groups of studies differed in relation to outcome, design, conditionality (unconditional vs conditional), age groups (older vs younger children), cash volume, beneficiary (children vs caregiver/household) and country.

### Meta-analysis

As there was high heterogeneity between the mental health outcomes used, we decided a priori to only run the meta-analysis on studies that measured the same mental health outcome. A meta-analysis was performed where more than four studies measured the same mental health outcome. Thus, we carried out a meta-analysis on studies that measured depressive symptoms. Seven of the nine interventions that measured depressive symptoms were suitable for inclusion in the meta-analysis. All analyses were conducted using Stata V.16. We converted

association parameters and SD into Cohen's *d* effect sizes (ES), defined as:

$$d = \frac{\tilde{Y}_t - \tilde{Y}_c}{S_p} = \frac{D}{S_p}$$

where  $\tilde{Y}_t$  and  $\tilde{Y}_c$  are the mean outcomes of the treatment and control groups, respectively, and  $S_p$  is the mean SD from the treatment and control groups. For most studies, the outcome means were not reported and instead the unstandardised treatment effect is reported as a treatment effect parameter estimate; in these cases, *D* reflects the unstandardised treatment effect estimate.

In studies where the SDs were not reported, SEs were used to calculate SD. When the SEs were not reported, CIs were used to calculate SEs, using the formula:

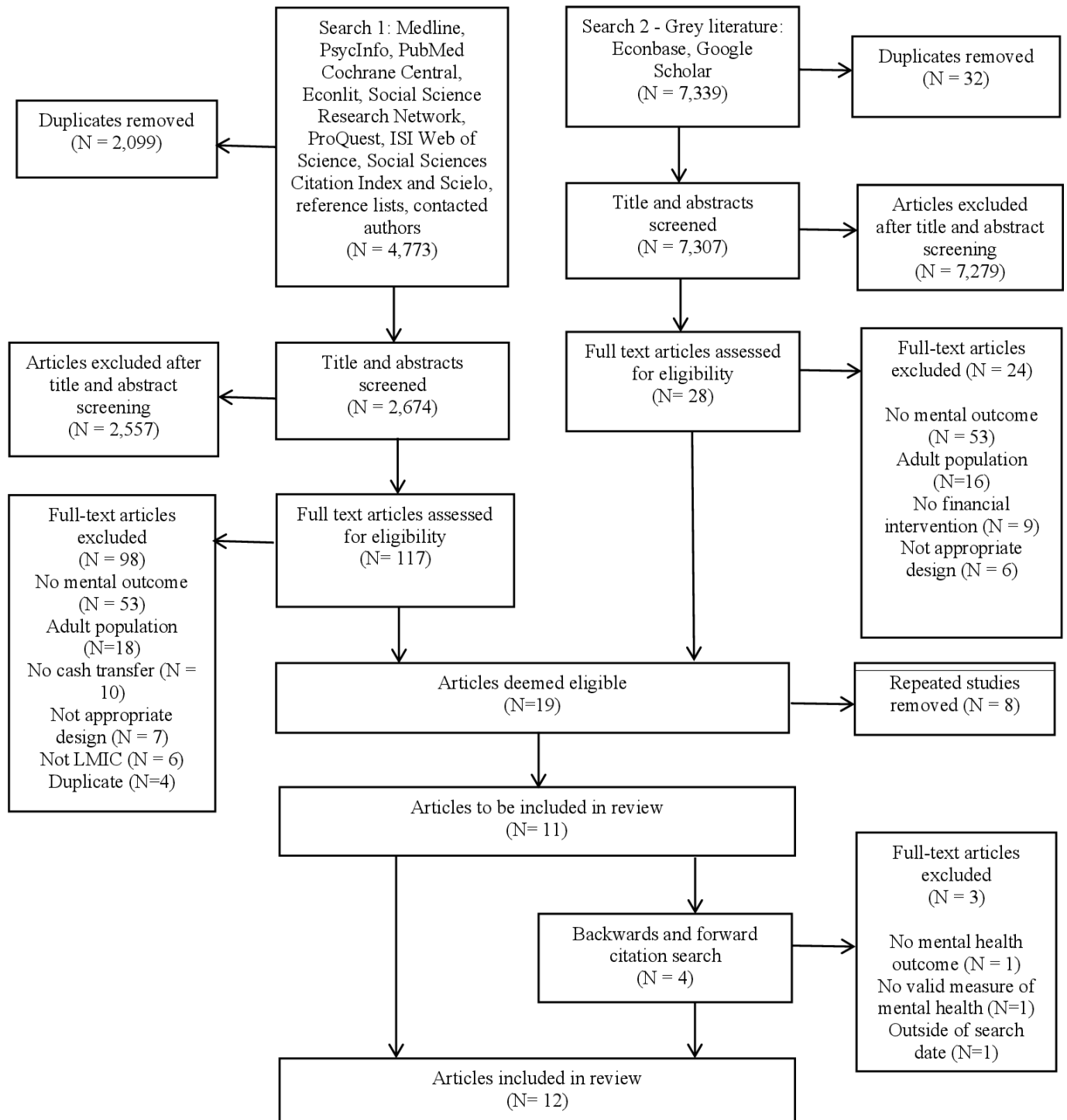
$$SD = \frac{\sqrt{N} \times (\text{upper CI} - \text{lower CI})}{3.92}$$

Heterogeneity was assessed using standardised effect sizes to calculate the  $I^2$  statistic and  $\chi^2$  tests. Due to heterogeneity between studies, we used a random-effects approach and performed sensitivity analyses. In the first sensitivity analysis, we excluded studies that were not RCTs; in the second, we excluded studies that were economic strengthening interventions, which involved smaller cash transfers with the aim of encouraging savings using matched savings accounts. Finally, we ran a random-effect meta-regression analysis to evaluate factors (sample size, country, cash volume, programme duration, design or conditionality) that could account for heterogeneity between studies of depressive symptoms only, based on a 5% significance level ( $p < 0.05$ ). Pooled effect sizes for depressive symptoms were then estimated.

## RESULTS

The search of academic databases yielded 4773 papers published in English, Spanish, French and Portuguese, of which 13 were eligible for inclusion in the review (figure 1). In addition, the second search yielded 7339 papers retrieved from the grey literature, of which four studies were included in the review. The backwards and forwards citation searches yielded four papers, of which one was eligible for inclusion in the review. All searches combined resulted in a total of 19 articles on 13 different interventions in nine countries.

Where the same intervention and outcomes were reported multiple times, only one paper was included in the analysis. There were six papers generated from the Bridges to Future Intervention in Uganda,<sup>34–39</sup> including one paper by Tozan *et al*,<sup>39</sup> which summarised all results from the previous papers, and thus was the only one included in the analysis. Two papers reported on Kenya's Cash Transfer Programme for Orphans and Vulnerable Children<sup>40 41</sup> and both reported the same outcomes in adolescents. We chose to include Kilburn *et al*<sup>40</sup> in the analysis, as they reported the effect size of the cash transfer on depressive symptoms. Two papers presented findings from Atención, a crisis cash transfer in Nicaragua with identical outcomes, so the later one was included



**Figure 1** Study selection. LMIC, low/middle-income country.

(Marcos et al., 2011). Two papers were from the cash transfer programme Oportunidades in Mexico, both were included as they measured different mental health outcomes: behavioural problems<sup>42</sup> and cortisol responses to stress.<sup>43</sup> Two papers reported the same outcomes from the same interventions in Malawi<sup>44 45</sup> and the later paper by Baird *et al*<sup>45</sup> was included as this paper also included longer-term mental health outcomes.

Thus, 12 articles were included in the review, reporting on 13 interventions, as one paper assessed two different

interventions (one conditional and one unconditional).<sup>45</sup> The key details of each study are listed in [table 1](#). Overall, the included studies involved 43 861 participants from Latin American or African regions: two in Mexico,<sup>42 43</sup> Malawi<sup>45 46</sup> and Kenya,<sup>40 47</sup> and one in Uganda,<sup>39</sup> Liberia,<sup>48</sup> Ecuador,<sup>49</sup> Nicaragua,<sup>50</sup> South Africa<sup>51</sup> and Cambodia.<sup>52</sup> All studies were published in 2007 or later. Eight papers focused on adolescents and young adults aged 11–22 years and four focused on younger children under 5 years. Follow-up varied between 1 and 10 years. Nine

**Table 1** Summary of study designs. Age range given where mean age is not provided

	Country	Design	Mean age (years)	Participants	Intervention and control	Conditionality	Mental health outcome	Follow-up (years)	Transfer amount (US\$)
Angeles <i>et al</i> <sup>46</sup>	Malawi	Cluster RCT	15–22	Families defined as ‘ultra-poor’ or labour constrained (n=1336 households)	Intervention: Malawi Social Cash Transfer Programme Transfer (n=652) Control: no transfer (n=640)	Unconditional	Center for Epidemiologic Studies Depression Scale: (CES-D-10)	2	Variable based on households’ size and composition
Baird <i>et al</i> <sup>45</sup>	Malawi	Cluster RCT	15.3	School-age girls in the low-income Zomba District (n=2049)	Intervention: conditional cash transfer (n=46 enumeration areas) or unconditional cash transfer (n=27 enumeration areas). Control: no transfer (n=15 enumeration areas)	Conditional (80% school attendance) and unconditional (identical with no requirements on school attendance)	Psychological distress (anxiety, depressive symptoms and social dysfunction): General Health Questionnaire 12 (GHQ-12)	5	\$1–5 per month to girls \$4–10 per month to caregivers
Fernald and Gunnar <sup>43</sup>	Mexico	Quasi-experimental	4.0	Children in households in low-income communities (n=1197)	Intervention: Oportunidades (n=554) Control: no transfer (n=762)	Conditional: compliance with school and clinic requirements	Baseline and responsivity salivary cortisol	3.5	Equivalent to approximately 20% increase of household income
Filmer and Schady <sup>52</sup>	Cambodia	Quasi-experimental	14.0	Families of children selected for a scholarship (n=3800 scholarships)	Intervention: Scholarship programme cash transfer (n=missing) Control: no transfer (n=missing)	Conditional: enrollment, regular attendance and satisfactory grade progress	Psychological distress: General Health Questionnaire (GHQ-12)	1.5	\$45 or \$60 three times per year
Kilburn <i>et al</i> <sup>40</sup>	Kenya	Individual RCT	16.8	Poor families taking care of orphans and vulnerable children (n=1540 households)	Intervention: Kenya’s Cash Transfer Programme for Orphans and Vulnerable Children (n=1408). Control: non-cash transfer households from the same sub-location, and non-cash transfer households from a different sub-location control (n=598)	Unconditional	Depressive symptoms: CES-D-10	4	\$10 per month

Continued

Table 1 Continued

	Country	Design	Mean age (years)	Participants	Intervention and control	Conditionality	Mental health outcome	Follow-up (years)	Transfer amount (US\$)
Kilburn <i>et al</i> <sup>51</sup>	South Africa	Cluster RCT	15.5	Young women between 13 and 20 years old enrolled in high school in low-income study location (n=2537)	Intervention: HIV Prevention Trials Network 068 which provided transfers to young women and their parents (n=1272) Control: no transfer (n=1261)	Conditional: 80% school days attendance	Depressive symptoms: CES-D-20 Power in relationships: 12-item sexual relationship power scale Hopefulness: 13-item Hope scale	1–3	\$20 per month
Macours <i>et al</i> <sup>50</sup>	Nicaragua	Cluster RCT	3–7	Children in low-income households between 0 and 83 months (n=4245)	Intervention: Atención a Crisis cash transfer with three arms: cash transfer, cash transfer with vocational training and business skills training, and cash transfer with lump-sum payment toward business development (n=3002 households) Control: no transfer or training (n=1019 households)	Conditional on regular health check-ups for children ages 0–5	Behavioural Problems Index Social-personal subscale of the Denver Developmental Screening Test	0.8	15% of per capita expenditures
Özler <i>et al</i> <sup>48</sup>	Liberia	Quasi-experimental	13.7	Adolescent girls and caregivers (n=84 villages, with 1216 eligible girls and 1132 caregivers).	Intervention: Girl Empower (GE), which provides a life skills curriculum to girls (n=393). The GE+ variation includes a cash incentive payment to caregivers for girls' participation in the programme (n=400) Control: no transfer or programme (n=383).	Unconditional	Self-esteem: 10-item Rosenberg Scale, Depressive symptoms and anxiety: 12-item Short Mood of Feelings Questionnaire PTSS: Children's Revised Impact of Event Scale	2	\$2 per month to girls, \$1.25 per month to caregivers

Continued

Table 1 Continued

Country	Design	Mean age (years)	Participants	Intervention and control	Conditionality	Mental health outcome	Follow-up (years)	Transfer amount (US\$)
Ozer <i>et al</i> <sup>42</sup> Mexico	Cluster RCT	5.2	Low-income households (n=506 communities)	Intervention: Oportunidades (n=778) Control: no transfer (n=263)	Conditional; prenatal care, baby care, immunisation, nutrition monitoring and supplementation, and participation in health, hygiene and nutrition education	Behavior Problems Index	3–5	\$130 (equivalent to approx. 20% increase of household income) every 2 months
Paxson and Schady <sup>49</sup> Ecuador	Quasi-experimental	3.3	Families with children in the lowest poverty index quintiles with at least one child under the age of 6 and no children ages six or above (n=17 987)	Intervention: Bono de Desarrollo Humano (n=1479) Control: not offered the Bono until several years later (n=384)	Unconditional	Behavioural problems: Woodcock, Johnson Muñoz, Mccarthy tests Behavioural problems	2	\$15 per month
Shangani <i>et al</i> <sup>47</sup> Kenya	Individual RCT	14.2	Low-income households with at least one orphaned and vulnerable child under 17 years (n=665 from 300 households)	Intervention: Kenya's Cash Transfer Programme for Orphans and Vulnerable Children (n=231). Control: non-cash transfer households from the same sub-location, and non-cash transfer households from a different sub-location (n=424)	Unconditional	Anxiety: 28-item Children's Manifest Anxiety Scale-Revised Depressive symptoms: 11-item Child Depression Inventory (CDI) PTSS: 28-item PTSD checklist Future outlook: single item question	3	\$20 per month

Continued



Table 1 Continued

	Country	Design	Mean age (years)	Participants	Intervention and control	Conditionality	Mental health outcome	Follow-up (years)	Transfer amount (US\$)
Tozan <i>et al</i> <sup>39</sup>	Uganda	Cluster RCT	12.0	Children who identified as an AIDS orphan (lost one or both parents to AIDS); living within a family (broadly defined rate (Bridges) or 2:1 rate and not an institution or orphanage); and enrolled in grades 5–6 in a public primary school in the study region. (n=48 primary schools, 1410 children)	Intervention: Bridges to the Future (n=487) and Bridges to the Future PLUS (n=396). Economic strengthening and asset accumulation with savings matched on 1:1 rate (Bridges) or 2:1 rate (Bridges PLUS). Control: usual care services for school-going AIDS-affected children in the region (n=500)	Unconditional	Depressive symptoms: 27-item Child Depression Inventory and the 20-item Beck Hopelessness Scale. Self-concept: 20-item Tennessee Self-Concept Scale and the 29-item Youth Self-Efficacy Survey.	4	Bridges: 1:1 matched savings Bridges PLUS: 2:1 matched savings

PTSD, post-traumatic stress disorder; PTSS, post-traumatic stress syndrome; RCT, randomised controlled trial.

**Table 2** The quality rating of each study based on the Cochrane risk of bias assessment

	Random sequence generation	Allocation concealment	Blinding (participants and personnel)	Blinding (outcome assessment)	Incomplete outcome data	Selective reporting	Other sources of bias
Angeles <i>et al</i> <sup>46</sup>	Unclear	Unclear	High risk	Unclear	Low risk	Low risk	Low risk
Baird <i>et al</i> <sup>45</sup>	Unclear	Unclear	Unclear	Unclear	Low risk	Unclear	Low risk
Fernald and Gunnar <sup>43</sup>	High risk	High risk	Unclear	Unclear	Unclear	High risk	High risk
Filmer and Schady <sup>52</sup>	High risk	High risk	Unclear	Unclear	Low risk	Unclear	Low risk
Kilburn <i>et al</i> <sup>40</sup>	Unclear	Unclear	Low risk	Unclear	Low risk	Unclear	Low risk
Kilburn <i>et al</i> <sup>51</sup>	Unclear	Unclear	Unclear	Unclear	Unclear	Low risk	Unclear
Macours <i>et al</i> <sup>50</sup>	Low risk	Unclear	Unclear	Unclear	Unclear	Low risk	Low risk
Özler <i>et al</i> <sup>48</sup>	Unclear	Low risk	Unclear	Unclear	Low risk	Low risk	High risk
Ozer <i>et al</i> <sup>42</sup>	High risk	High risk	Unclear	Unclear	Low risk	Low risk	High risk
Paxson and Schady <sup>49</sup>	High risk	High risk	Unclear	Unclear	High risk	Unclear	High risk
Shangani <i>et al</i> <sup>47</sup>	High risk	High risk	Unclear	Unclear	Unclear	Low risk	High risk
Tozan <i>et al</i> <sup>39</sup>	Unclear	Unclear	Unclear	Unclear	Unclear	Low risk	High risk

studies were cluster or individual RCTs and four were non-randomised evaluations.

There were 11 cash transfers programmes<sup>40 42 43 45–47 49–52</sup> and two economic strengthening programmes that matched savings in Uganda and Liberia.<sup>39 48</sup> Of the 13 interventions, six were conditional<sup>42 43 45 50–52</sup> and seven were unconditional.<sup>39 40 45–49</sup>

A range of mental health outcomes were assessed among the 13 programmes, nine of which measured depressive symptoms or psychological distress,<sup>39 40 42 45–48 51 52</sup> four anxiety,<sup>9 31 32</sup> three psychological well-being<sup>39 47 51</sup> (including future outlook, well-being, self-concept/esteem and hopefulness), three childhood social or behavioural functioning,<sup>42 49 50</sup> two PTSDs,<sup>47 48</sup> one hopelessness<sup>39</sup> and one stress.<sup>43</sup> These outcomes were largely assessed using self-report questionnaires by the child/youth or sometimes by the caregiver in studies of younger children. One study assessed stress using biomarkers.<sup>43</sup>

### Quality of bias assessment

The quality rating of each study is detailed in table 2. We judged the overall risk of bias to be moderately high. The key issues were lack of randomisation and blinding. Allocation concealment and blinding are not feasible for cash transfer studies as adult participants are aware of whether they receive the cash transfer or not, although arguably many children and adolescents may not be aware as the transfer is made to the parents. Selective reporting was often unclear due to lack of published protocols. Several studies were classified as high risk on other sources of bias due to issues involving outcome (eg, number of cortisol measurements), lack of controlling for potential confounders for non-randomised controlled studies,<sup>43</sup> use of non-validated questionnaires to measure mental health outcomes<sup>39 42 47 48</sup> or exclusion of children with older siblings.<sup>49</sup> Egger’s test for studies included in the

meta-analysis did not show a significant publication bias (0.38, 95% CIs: -5.08 to 5.85; p=0.86).

The mental health effects of these interventions are summarised in table 3. A total of 11/13 (85%) of interventions reported a significant positive effect on at least one measure of mental health,<sup>39 40 42 43 45–47 50–52</sup> including one which had a poor quality rating,<sup>49</sup> while only two studies, both of which were quasi-experiments found no effect on any measure.<sup>48 49</sup> Of the seven studies<sup>39 42 45 47 50 51</sup> that measured multiple outcomes, all reported mixed effects of the intervention, with none reporting a positive effect on every mental health outcome. No studies reported a negative effect on mental health.

Of the 10 interventions that measured depressive symptoms, five—of which four were unconditional and one was conditional, and all but one<sup>52</sup> were conducted in Africa—reported positive small to large effects (Cohen’s d ranging from 0.02 to 0.76)<sup>40 45 46 52</sup> and five—of which three were conditional, two were unconditional and one was conducted in South America—reported no effect.<sup>39 42 47 48 51</sup> Two of the studies that reported no effect were matched savings programs,<sup>39 48</sup> rather than traditional cash transfers, and the study by Özler and colleagues<sup>48</sup> used a quasi-experimental design.

Of the four that measured anxiety,<sup>45 47 48</sup> three cash transfer studies—of which one was conditional and two were conditional—reported a positive, small effect (Cohen’s d ranging from 0.06 to 0.28)<sup>45 47</sup> and the matched-savings study reported no effect.<sup>48</sup> All were conducted in Africa. Of the three studies that measured psychological well-being,<sup>39 47 51</sup> all three reported positive small to large effects (Cohen’s d ranging from 0.26 to 0.80). One was unconditional, one was conditional and one was an unconditional matched-savings intervention and all were conducted in Africa. Of the three studies that measured social/behavioural functioning<sup>42 49 53</sup> two

**Table 3** Summary of study outcomes included in review. Findings are unadjusted as presented in the paper and CIs are only included where reported. Effect sizes presented are mean change in outcome

	Change in effect	Psychological distress and depressive symptoms	Psychological well-being	Social/behavioural functioning
Angeles <i>et al</i> <sup>46</sup>	Improved	Depressive symptoms (-2.05, p<0.01) and depressive symptoms (-0.15, p<0.01)		
Baird <i>et al</i> <sup>45</sup> – Conditional	Improved (psychological distress)	Reduction psychological distress (-0.07, SE=0.03, p<0.05)		
Baird <i>et al</i> <sup>45</sup> – Unconditional	Improved (psychological distress)	Reduction in psychological distress (-0.14, SE=0.05, p<0.01)		
Fernald and Gunnar <sup>43</sup>	Improved	Effect on salivary cortisol (-0.12, 95% CI: -0.19 to -0.05; p<0.0001)		
Filmer and Schady <sup>52</sup>	Improved	Effect on psychological distress (0.03, SE: 0.01, p<0.01)		
Kilburn <i>et al</i> <sup>40</sup>	Improved	Effect on depressive symptoms (0.79, 95% CI: 0.63 to 0.99; p<0.01)		
Kilburn <i>et al</i> <sup>51</sup>	Not improved (depressive symptoms) Improved (power in sexual relationships and hopefulness) in poorest women	No effect on depressive symptoms (-0.02, SE: 0.03, p>0.05)	Effect on sexual relationship power scores (0.28, SE=0.10, p<0.01), greater hope (0.14, SE: 0.07, p<0.05) in poorest women	
Macours <i>et al</i> <sup>50</sup>	Improved (socio-emotional functioning) Not improved (behavioural problems)			Effect of intervention on socio-personal outcomes (0.10, SE: 0.05, p<0.01) No effect on behavioural problems (-0.02, SE: 0.06, p>0.05)
Özler <i>et al</i> <sup>48</sup>	Not improved	No effect on psychosocial outcomes (0.24, SE: 0.64, p>0.05)		
Ozer <i>et al</i> <sup>42</sup>	Not improved (anxiety/ depressive symptoms or total effects) Improved (aggressive/ oppositional problems)	No effect on anxiety/depressive symptoms (-0.29, 95% CI: -0.70 to 0.13; p=0.18) or total symptoms (-0.71, 95% CI: -1.12 to 0.01; p=0.05)		Effect on aggressive/oppositional problems (-0.42, 95% CI: -0.80 to -0.04; p=0.03)
Paxson and Schady <sup>49</sup>	Not improved			No effect on behavioural problems (0.11, SE: 0.06, p>0.05)

Continued

Table 3 Continued

	Change in effect	Psychological distress and depressive symptoms	Psychological well-being	Social/behavioural functioning
Shangani <i>et al</i> <sup>47</sup>	Not improved (depressive symptoms) Improved (PTSS, anxiety and future outlook)	Effect on anxiety (0.57, 95% CI: 0.42 to 0.78; p<0.001), and PTSS (0.50, 95% CI: 0.29 to 0.89; p<0.01). No effect on depressive symptoms (0.77, 95% CI: 0.47 to -1.27, p>0.05)	Effect on positive future outlook (1.47, 95% CI: 1.08 to 1.99; p<0.01)	
Tozan <i>et al</i> <sup>49</sup>	Not improved (depressive symptoms) Improved (self-concept, self-efficacy and hopelessness)	Effect on depressive symptoms (-0.14, 95% CI: -0.32 to 0.03; p=0.10)	Effect on self-concept (0.26, 95% CI: 0.09 to 0.44; p<0.05), self-efficacy (0.26, 95% CI: 0.09 to 0.43; p<0.01) and hopelessness (-0.28, 95% CI: -0.43 to -0.12; p<0.05)	

reported a small positive effect (Cohen's d ranging from 0.10 to 0.42<sup>42 50</sup> and one found no effect,<sup>49</sup> although one study used a quasi-experimental design and has a poor quality rating, hence results may indicate bias.

Out of all of the six conditional interventions,<sup>42 43 45 50-52</sup> all six reported a positive effect on at least one mental health outcome (Cohen's d ranging from 0.02 to 0.77), and of the seven unconditional interventions,<sup>39 40 45-49</sup> five reported a positive effect on at least one mental health outcome (Cohen's d ranging from 0.10 to 0.80). Hence, when compared across conditionality, a greater percentage of conditional intervention studies reported a positive effect (100%) than unconditional intervention studies (71%). Likewise, a greater percentage of conditional interventions<sup>45 52</sup> (2/3—67%) reported a positive impact on depressive symptoms, compared with unconditional interventions<sup>40 45 46</sup> (3/7—43%). By contrast, only one study explicitly compared outcomes between conditional and unconditional cash transfer programmes.<sup>45</sup> This study found that unconditional interventions had a greater positive impact on psychological distress than conditional ones. However, effects of both programmes disappeared at the 5-year follow-up after the cash transfer had stopped.<sup>45</sup>

There were nine studies that reported specific cash volume. Of the three studies with a transfer of \$20 per month or higher,<sup>42 47 51</sup> all three (100%) reported at least one significant positive effect. In comparison, three<sup>40 45</sup> of the five studies (60%) with transfers lower than \$20 per month<sup>40 45 48 49</sup> reported a positive effect.

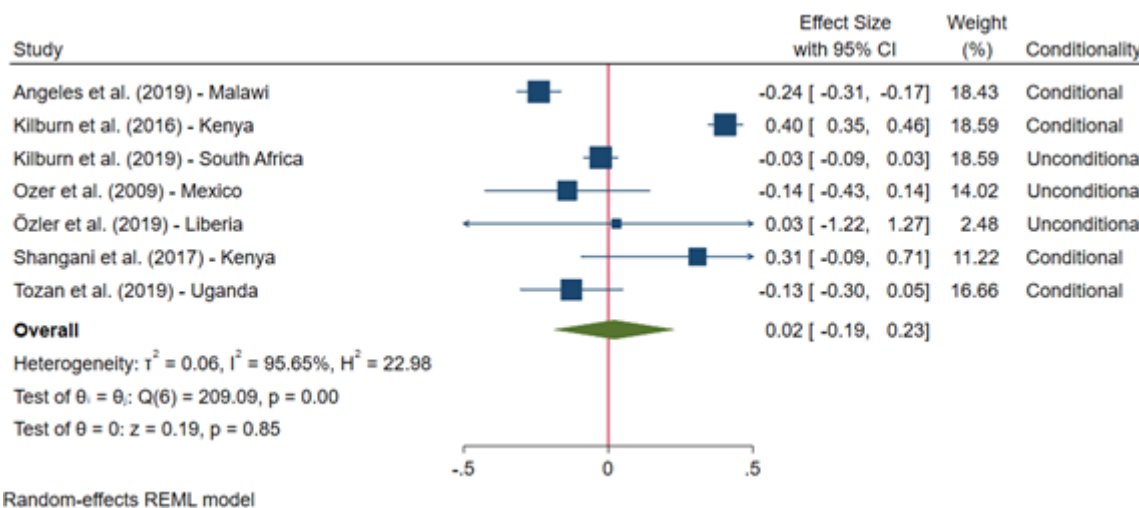
Of the five studies in which children were beneficiaries,<sup>39 45 48 51</sup> four (80%) reported a positive effect on mental health.<sup>39 45 51</sup> Of the seven in which household/caregivers were the beneficiaries,<sup>40 42 46 47 49 50 52</sup> six (86%) reported a positive result.<sup>40 42 46 47 50 52</sup>

### Meta-analysis

Seven of the 10 interventions that measured depressive symptoms were suitable for inclusion in the meta-analysis.<sup>39 40 42 46-48 51</sup> The two conditional and unconditional programmes reported by Baird *et al*<sup>45</sup> and the study by Filmer and Schady<sup>52</sup> could not be included as individual sample sizes in each group were not provided, nor were effect sizes.

Results from the meta-analysis indicated a positive, but non-significant effect of interventions on depressive symptoms: the pooled Cohen's d effect size from the effects of cash transfer schemes on depressive symptoms was (0.02, 95% CI: -0.19 to 0.23; p=0.85), ranging from -0.24 to 0.40 (figure 2). However, 95% of the variation across estimates was due to heterogeneity between studies (I<sup>2</sup>=95.2). This suggests that treatment effect differences across studies are not random, which compromises the validity of the summary estimate.

The meta-regression analysis revealed that none of the factors considered on their own (sample size, country, cash volume, programme duration, design or conditionality) explained the high heterogeneity. To remove



**Figure 2** Forest plot comparing studies which used Cohen's d to assess the effect of cash transfers on depressive symptoms in young people. While the effect size is negative, reflecting a positive impact of the CT on reducing depression is non-significant.

heterogeneity across studies, we ran a series of sensitivity analyses with subgroups. The first was conducted only among RCTs. A second sensitivity analysis was run among studies that were traditional cash transfers, which involved excluding the two economic strengthening programmes.<sup>39 48</sup> The exclusion of these studies did not change the conclusion of the primary meta-analyses (data not shown). We also ran subgroup analyses comparing conditional<sup>51 54</sup> and unconditional<sup>39 40 46–48</sup> studies. The analysis had no significant subgroup effect ( $X^2=0.38$ ,  $p=0.54$ ). However, with only two studies contributing to the conditional subgroup, it is unlikely that this analysis can be interpreted with confidence.

## DISCUSSION

This study aimed to review the literature on the impact of cash transfers programmes on the mental health of children and young people in LMICs. Twelve articles, which assessed the impact of 13 programmes, were included in the review and narrative synthesis, and seven studies were included in the meta-analysis to assess the effect of cash transfers on depressive symptoms specifically.

Results from the narrative synthesis suggest that cash transfer programmes may improve some mental health outcomes in children and young people. In particular, 11 of 13 (85%) evaluations reported a positive effect on at least one measure of mental health in children and young people. On the other hand, the meta-analysis suggests that cash transfers had no effect on depressive symptoms among children and young people, although the small number of studies and high heterogeneity precludes firm conclusions, and no study found an effect on all mental health outcomes. It is important to note that studies found either positive effect or null effects but none found negative effects on mental health. This is important for policymakers, showing that there is no evidence of negative consequences of cash transfers for

the mental health of children and young people. Our findings suggest that social protection programmes can have a positive impact on mental health of young people. Benefits may be optimised through cross-collaboration, such as linking mental health interventions with cash transfers.

While there does not seem to be any difference in findings of studies in which children were beneficiaries, as findings were comparable to studies where caregivers with beneficiaries, the volume of cash transferred does seem to be important. Our narrative synthesis showed 100% of studies with transfers at \$20 or higher per month reported a positive effect on mental health, whereas only 60% of studies with transfers lower than \$20 reported a positive effect. In the meta-analysis, one of the two studies that reported no effect on mental health was a matched-savings programme,<sup>48</sup> in which the volume of cash transferred each month for matched-savings programme is often very small (\$2), compared with \$10–20 per month in traditional cash transfer programmes.<sup>39 40 47 51</sup> Further research should investigate whether the impact of cash transfers on youth mental health differs with cash volume, as this has important implications for policy. Policy decisions about the amount, duration and administration of cash transfers could also influence mental health, and optimising their role might benefit from cross-sectoral collaboration. Our findings support recent recommendations<sup>27</sup> for relatively low-cost policy changes, such as cash volume, targeting and predictability and duration of payments, which could enhance the mental health impacts of cash transfers for young people.

This review demonstrates the need for research into studies understanding the effects of the conditionality of cash transfers on mental health outcomes. Earlier studies that have directly compared conditional versus unconditional programmes suggest that conditional cash transfers have larger impacts for education, health and

nutrition outcomes.<sup>13</sup> Research also suggests that conditional cash transfers may be more appropriate in Latin America, and less appropriate in African contexts.<sup>55</sup> In contrast, we found that both conditional and unconditional programmes can have positive effects on mental health, but there were null findings from studies in both categories. Except for one study in Malawi,<sup>45</sup> none of the studies explicitly included multiple arms that directly compared conditional and unconditional transfers. In the one study that did,<sup>45</sup> unconditional transfers had a slightly greater positive impact on psychological distress than conditional transfers, but results vanished for both interventions 5 years after the programme had stopped. The majority of conditional cash transfer studies were from Central and South America, whereas studies on unconditional cash transfers and economic strengthening programmes were conducted in Africa. Overall, more research is needed to isolate the impact of conditional and unconditional cash transfer programmes on mental health.

While our findings suggest cash transfers may positively impact the mental health of young people, the meta-analysis found a null effect on depressive symptoms. This is likely to reflect heterogeneity across studies, programmes or regions.

Several differences across both study methods and programme designs may have contributed to the heterogeneity observed in our study. In terms of differences in methods, sample sizes, trial design (cluster, individual RCTs, quasi-experimental), outcomes and outcome measures (eg, self-report, clinician assessed, biomarkers) varied across studies. In terms of differences in the intervention, the amount of money received ranging from \$2 to \$20 a month, seven studies involved conditionalities, while seven were unconditional cash transfers, and the age of populations studied ranged from 3 to 22 years.<sup>48 51</sup>

Notwithstanding potential methodological explanations, the heterogeneity across studies may also reflect genuine differences in the impact of cash transfers on mental health across different countries, cultures and mental health outcomes. Transfers may improve some mental health outcomes but not others—for example, there may be effects on childhood externalising conditions such as oppositional behaviour,<sup>42</sup> but not on internalising conditions such as depression. Cash transfers may also generate inconsistent results depending on whether they successfully improve underlying socioeconomic conditions and life chances for young people, such as improved educational attainment. It may also be that improvements on education, physical health or life chances alone do not consistently translate into mental health improvements,<sup>56</sup> and that more explicit components associated with mental health support are required in order to generate mental health improvements in young people.

Overall, results from this review suggest that cash transfers by themselves may not be a magic bullet to improve mental health in children and young people

living in poverty, and that effects might be very different for different countries, conditionality, volume of cash, age and mental health outcome. While this was beyond the scope of the current paper, further understanding of the mechanisms by which cash transfers influence mental health is necessary to understand whether these inconsistencies in findings reflect inconsistent effects on mental health, or inconsistent effects on the mechanisms by which changes to mental health occur. For instance, addressing the indirect mechanisms of cash transfers improving mental health through increasing household income, and directly through reducing child labour is an important area for future research.

Our findings reflect that this is a relatively young field of research which still requires considerable attention. While nearly 10 000 titles and abstracts were screened, only 13 papers were eligible for inclusion in this review, despite a our broad inclusion criteria. While there has been an increase in the number of RCTs assessing cash transfers in LMICs since the review in 2011,<sup>18</sup> there is a clear need for high-quality randomised controlled trials of poverty reduction interventions to incorporate mental health as part of the outcomes assessed.

There are several ways that future studies in this field of research could be improved. First, studies should unpack the mechanisms that link cash transfers to mental health. Given that the mechanisms by which cash transfers affect mental health are currently unclear, further RCTs should seek to address this by exploring whether cash transfers causally impact mental health, and measuring the direct and indirect mechanisms by which changes occur. Second, we recommend that future trials include a conditional and unconditional arm to directly compare the effects of conditionality on mental health among children and young people. Efficiency and administrative costs associated with conditional versus unconditional programmes also need to be considered to inform future policies on poverty reduction and mental health. Third, little qualitative research or process evaluation findings were reported in the papers included in this review. Yet, mixed methods are essential to understand the role of culture and other local, contextual factors. Longitudinal qualitative methods should be applied alongside RCTs to provide in-depth understanding of how cash transfers impact the mental health and stress of recipients and their children. Finally, following recommendations by Pega and colleagues,<sup>25</sup> steps must be taken to reduce the risk of bias in the field. Future studies should pre-register protocols to reduce potential selective reporting. It is important that studies provide detailed assessments of the quality of evidence so risk of bias can be reliably assessed.

Strengths of this review include the fact that we reviewed a broad range of academic databases and grey literature, with no restrictions on publication format, period of time or language. However, there are several limitations to this review. For most mental health outcomes, a narrative synthesis was performed as less than four

studies measured the same mental health outcome. It was challenging to assess differences across studies of a small number, hence meta-analyses could not be carried out for specific mental health outcomes other than depressive symptoms. The financial poverty reduction schemes assessed in this review may also be heterogeneous in their focus on different aspects of poverty and target beneficiaries. Poverty is complex and multidimensional, and evidence suggests that the strength and direction of the relationship between poverty and mental health differs across poverty dimensions.<sup>4</sup> As concluded in the recent review by Pega and colleagues,<sup>25</sup> interventions that tackle only one dimension of poverty may not substantially improve mental health, particularly when not targeted to specific subgroups.

#### Author affiliations

<sup>1</sup>Health Service & Population Research Department, King's College London Institute of Psychiatry Psychology and Neuroscience, London, UK

<sup>2</sup>Global Health and Social Medicine, King's College London, London, UK

<sup>3</sup>Alan J Flisher Centre for Public Mental Health, Department of Psychiatry and Mental Health, University of Cape Town, Cape Town, South Africa

<sup>4</sup>Department of Social and Behavioural Sciences, Harvard School of Public Health, Boston, Massachusetts, USA

<sup>5</sup>Care Policy and Evaluation Centre, Department of Health Policy, The London School of Economics and Political Science, London, UK

<sup>6</sup>Escuela de Gobierno Alberto Lleras Camargo, Universidad de los Andes, Bogota, Colombia

<sup>7</sup>Faculdade de Medicina FMUSP, Departamento de Medicina Preventiva, Universidade de Sao Paulo, Sao Paulo, Brazil

<sup>8</sup>Programa de Pós-graduação em Distúrbios do Desenvolvimento, Universidade Presbiteriana Mackenzie, Sao Paulo, Brazil

**Contributors** AZ designed the study, conducted the review and analysis and prepared the manuscript. EG conducted the review and analysis and helped design the study and advise on the manuscript. CL designed the study and supervised the review, analysis and write-up. DMD and A-LP conducted the grey literature review and advised on the manuscript. MA-P and RA supervised the review, analysis and write-up. SEL PH, YD, AM, AB, CSP and CZ helped design the study and all authors read and commented on the the manuscript.

**Funding** This study is an output of the CHANCES-6 study. This work was supported by the UKRI's Global Challenges Research Fund (ES/S001050/1). The support of the Economic and Social Research Council (ESRC) is gratefully acknowledged. MA-P is additionally supported by the ESRC Centre for Society and Mental Health at King's College London (ESRC Reference: ES/S012567/1).

**Competing interests** None declared.

**Patient consent for publication** Not required.

**Provenance and peer review** Not commissioned; externally peer reviewed.

**Data availability statement** Data sharing not applicable as no datasets generated and/or analysed for this study. Data extracted from studies are available directly from published work. Data extraction tables generated for the purposes of this review are available upon request.

**Supplemental material** This content has been supplied by the author(s). It has not been vetted by BMJ Publishing Group Limited (BMJ) and may not have been peer-reviewed. Any opinions or recommendations discussed are solely those of the author(s) and are not endorsed by BMJ. BMJ disclaims all liability and responsibility arising from any reliance placed on the content. Where the content includes any translated material, BMJ does not warrant the accuracy and reliability of the translations (including but not limited to local regulations, clinical guidelines, terminology, drug names and drug dosages), and is not responsible for any error and/or omissions arising from translation and adaptation or otherwise.

**Open access** This is an open access article distributed in accordance with the Creative Commons Attribution Non Commercial (CC BY-NC 4.0) license, which permits others to distribute, remix, adapt, build upon this work non-commercially, and license their derivative works on different terms, provided the original work is

properly cited, appropriate credit is given, any changes made indicated, and the use is non-commercial. See: <http://creativecommons.org/licenses/by-nc/4.0/>.

#### ORCID iD

Annie Zimmerman <http://orcid.org/0000-0003-4692-536X>

#### REFERENCES

- Toye JI M. Social inclusion and community economic development: literature review. *The Canadian CED Network* 2004;4:Cd008137.
- Lund C, Cois A. Simultaneous social causation and social drift: longitudinal analysis of depression and poverty in South Africa. *J Affect Disord* 2018;229:396–402.
- Unicef. Child poverty UNICEF, 2020. Available: <https://www.unicef.org/social-policy/child-poverty>
- Lund C, Breen A, Flisher AJ, *et al*. Poverty and common mental disorders in low and middle income countries: a systematic review. *Soc Sci Med* 2010;71:517–28.
- Patel V, Kleinman A. Poverty and common mental disorders in developing countries. *Bull World Health Organ* 2003;81:609–15.
- Ozer EJ, Fernald LCH, Weber A, *et al*. Does alleviating poverty affect mothers' depressive symptoms? A quasi-experimental investigation of Mexico's Oportunidades programme. *Int J Epidemiol* 2011;40:1565–76.
- Ensminger ME, Hanson SG, Riley AW, *et al*. Maternal psychological distress: adult sons' and daughters' mental health and educational attainment. *J Am Acad Child Adolesc Psychiatry* 2003;42:1108–15.
- Hanandita W, Tampubolon G. Does poverty reduce mental health? an instrumental variable analysis. *Soc Sci Med* 2014;113:59–67.
- Ridley M, Rao G, Schilbach F, *et al*. Poverty, depression, and anxiety: causal evidence and mechanisms. *Science* 2020;370:w27157.
- Baird S, Ferreira FHG, Özler B, *et al*. Conditional, unconditional and everything in between: a systematic review of the effects of cash transfer programmes on schooling outcomes. *J Dev Effect* 2014;6:1–43.
- Owusu-Addo E, Renzaho AMN, Smith BJ. The impact of cash transfers on social determinants of health and health inequalities in sub-Saharan Africa: a systematic review. *Health Policy Plan* 2018;33:675–96.
- Lagarde M, Haines A, Palmer N. Conditional cash transfers for improving uptake of health interventions in low- and middle-income countries: a systematic review. *JAMA* 2007;298:1900–10.
- Bastagli F, Hagen-Zanker J, Harman L. *Cash transfers: what does the evidence say. A rigorous review of programme impact and the role of design and implementation features*. ODI Briefing London: Overseas Development Institute, 2016.
- Behrman JR. Medium-term impacts of the oportunidades conditional cash transfer program on rural youth in Mexico” 219–70. *Discussion papers//Ibero America Institute for Economic Research* 2009;122:219–70.
- Santos MCS, Delatorre LR, Ceccato MdsGB, *et al*. Programa Bolsa Família E indicadores educacionais em crianças, adolescentes E escolas no Brasil: revisão sistemática. *Ciênc. saúde coletiva* 2019;24:2233–47.
- Leroy JL, Ruel M, Verhofstadt E. The impact of conditional cash transfer programmes on child nutrition: a review of evidence using a programme theory framework. *J Dev Effect* 2009;1:103–29.
- Wahlbeck K, Cresswell-Smith J, Haaramo P, *et al*. Interventions to mitigate the effects of poverty and inequality on mental health. *Soc Psychiatry Psychiatr Epidemiol* 2017;52:505–14.
- Lund C, De Silva M, Plagerson S, *et al*. Poverty and mental disorders: breaking the cycle in low-income and middle-income countries. *Lancet* 2011;378:1502–14.
- Fernald LCH, Hamad R, Karlan D, *et al*. Small individual loans and mental health: a randomized controlled trial among South African adults. *BMC Public Health* 2008;8:409.
- Gaarder MM, Glassman A, Todd JE. Conditional cash transfers and health: unpacking the causal chain. *J Dev Effect* 2010;2:6–50.
- Samuels F, Stavropoulou M. 'Being able to breathe again': the effects of cash transfer programmes on psychosocial wellbeing. *J Dev Stud* 2016;52:1099–114.
- Jones PB. Adult mental health disorders and their age at onset. *British Journal of Psychiatry* 2013;202:s5–10.
- Knapp M, King D, Healey A, Thomas C, *et al*. Economic outcomes in adulthood and their associations with antisocial conduct, attention deficit and anxiety problems in childhood. *J Ment Health Policy Econ* 2011;14:37–47.
- McCrone P, Knapp M, Fombonne E. The Maudsley long-term follow-up of child and adolescent depression. *Eur Child Adolesc Psychiatry* 2005;14:407–13.

- 25 Pega F, Liu SY, Walter S, *et al*. Unconditional cash transfers for reducing poverty and vulnerabilities: effect on use of health services and health outcomes in low- and middle-income countries. *Cochrane Database Syst Rev* 2017;11:Cd011135.
- 26 McGuire J, Kaiser C, Bach-Mortensen A. The impact of cash transfers on subjective well-being and mental health in low- and middle-income countries: a systematic review and meta-analysis. *SocArXiv* 2020.
- 27 Bauer A, Garman E, McDaid D, Aea B, *et al*. Integrating youth mental health into cash transfer programmes in response to the COVID-19 crisis in low-income and middle-income countries. *Lancet Psychiatry* 2021:S2215-0366(20)30382-5.
- 28 Moher D, Liberati A, Tetzlaff J, *et al*. Preferred reporting items for systematic reviews and meta-analyses: the PRISMA statement. *PLoS Med* 2009;6:e1000097.
- 29 Lagarde M, Haines A, Palmer N, *et al*. The impact of conditional cash transfers on health outcomes and use of health services in low and middle income countries. *Cochrane Database Syst Rev* 2009;67:Cd008137.
- 30 Briscoe S, Bethel A, Rogers M. Conduct and reporting of citation searching in Cochrane systematic reviews: a cross-sectional study. *Res Synth Methods* 2020;11:169–80.
- 31 Higgins JP, Thomas J, Chandler J, *et al*, eds. *Chapter 5: collecting data*. *Cochrane handbook for systematic reviews of interventions*. Hoboken: John Wiley & Sons, 2019.
- 32 Higgins JPT, Altman DG, Gotzsche PC, *et al*. The Cochrane Collaboration's tool for assessing risk of bias in randomised trials. *BMJ* 2011;343:d5928.
- 33 Egger M, Davey Smith G, Schneider M, *et al*. Bias in meta-analysis detected by a simple, graphical test. *BMJ* 1997;315:629–34.
- 34 Ssewamala FM, Ismayilova L. Integrating Children's Savings Accounts in the Care and Support of Orphaned Adolescents in Rural Uganda. *Social Service Review* 2009;83:453–72.
- 35 Ssewamala FM, Neilands TB, Waldfogel J, *et al*. The impact of a comprehensive microfinance intervention on depression levels of AIDS-orphaned children in Uganda. *J Adolesc Health* 2012;50:346–52.
- 36 Han C-K, Ssewamala FM, Wang JS-H. Family economic empowerment and mental health among AIDS-affected children living in AIDS-impacted communities: evidence from a randomised evaluation in southwestern Uganda. *J Epidemiol Community Health* 2013;67:225–30.
- 37 Karimli L, Ssewamala FM, Neilands TB, *et al*. Poverty, economic strengthening, and mental health among AIDS orphaned children in Uganda: mediation model in a randomized clinical trial. *Soc Sci Med* 2019;228:17–24.
- 38 Karimli L, Ssewamala FM. Do savings mediate changes in adolescents' future orientation and health-related outcomes? findings from randomized experiment in Uganda. *J Adolesc Health* 2015;57:425–32.
- 39 Tozan Y, Sun S, Capasso A, *et al*. Evaluation of a savings-led family-based economic empowerment intervention for AIDS-affected adolescents in Uganda: a four-year follow-up on efficacy and cost-effectiveness. *PLoS One* 2019;14:e0226809.
- 40 Kilburn K, Thirumurthy H, Halpern CT, *et al*. Effects of a large-scale unconditional cash transfer program on mental health outcomes of young people in Kenya. *J Adolesc Health* 2016;58:223–9.
- 41 Handa S, Martorano B, Halpern C. The impact of the Kenya CT–OVC on parents' wellbeing and their children. *Social Science & Medicine* 2014;141:36–45.
- 42 Ozer EJ, Fernald LCH, Manley JG, *et al*. Effects of a Conditional Cash Transfer Program on Children's Behavior Problems. *Pediatrics* 2009;123:e630–7.
- 43 Fernald L, Gunnar MR. Effects of a poverty-alleviation intervention on salivary cortisol in very low-income children. *Social Sciences and Medicine* 2009;68:2180–9.
- 44 Baird S, McIntosh C, Özler B. Cash or condition? Evidence from a cash transfer experiment. *Q J Econ* 2011;126:1709–53.
- 45 Baird S CM, Özler B. When the money runs out: evaluating the longer-term impacts of a two year cash transfer program. *World Bank Policy Research Working Paper* 2016;7901.
- 46 Angeles G, de Hoop J, Handa S, *et al*. Government of Malawi's unconditional cash transfer improves youth mental health. *Soc Sci Med* 2019;225:108–19.
- 47 Shangani S, Operario D, Genberg B, *et al*. Unconditional government cash transfers in support of orphaned and vulnerable adolescents in Western Kenya: is there an association with psychological wellbeing? *PLoS One* 2017;12:e0178076.
- 48 Özler B, Hallman K, Guimond M-F, *et al*. *Girl Empower - A gender transformative mentoring and cash transfer intervention to promote adolescent wellbeing: Impact findings from a cluster-randomized controlled trial in Liberia*. *SSM Popul Health* 2020;10:100527.
- 49 Paxson C, Schady N. *Does money matter? the effects of cash transfers on child health and cognitive development in rural Ecuador*. Washington DC: Processed World Bank, 2008.
- 50 Macours K, Schady N, Vakis R. Cash transfers, behavioral changes, and cognitive development in early childhood: evidence from a randomized experiment. *Am Econ J Appl Econ* 2012;4:247–73.
- 51 Kilburn K, Hughes JP, MacPhail C, *et al*. Cash transfers, young women's economic well-being, and HIV risk: evidence from HPTN 068. *AIDS Behav* 2019;23:1178–94.
- 52 Filmer D, Schady N. *School enrollment, selection and test scores: school enrollment, selection and test scores*. Washington, DC: The World Bank, 2009.
- 53 Macours K, Schady N, Vakis R. *Cash transfers, behavioral changes, and cognitive development in early childhood: evidence from a randomized experiment*. Washington, DC: Processed World Bank, 2008.
- 54 Ozer EJ, Fernald LCH, Manley JG, *et al*. Effects of a conditional cash transfer program on children's behavior problems. *Pediatrics* 2009;123:e630–7.
- 55 Schubert B, Slater R. Social cash transfers in low-income African countries: conditional or unconditional? *Development Policy Review* 2006;24:571–8.
- 56 Courtin E, Nafilyan V, Glymour M, *et al*. Long-term effects of compulsory schooling on physical, mental and cognitive ageing: a natural experiment. *J Epidemiol Community Health* 2019;73:370–6.



**Supplementary****Search strategy for PUBMED (MEDLINE), 2000 to Present.****Key concepts:** LMIC, cash transfer schemes, mental health, controlled designs

Concept	Keywords
LMIC	developing country[Title/Abstract] OR less developed country[Title/Abstract] OR third world country[Title/Abstract] OR under developed country[Title/Abstract] OR middle income country[Title/Abstract] OR low income country[Title/Abstract] OR middle-income country[Title/Abstract] OR low-income country[Title/Abstract] OR underserved country[Title/Abstract] OR under served country[Title/Abstract] OR deprived country[Title/Abstract] OR poor country[Title/Abstract] OR poorer country[Title/Abstract] OR poorest country[Title/Abstract] OR developing countries[Title/Abstract] OR less developed countries[Title/Abstract] OR third world countries[Title/Abstract] OR under developed countries[Title/Abstract] OR middle income countries[Title/Abstract] OR low income countries[Title/Abstract] OR middle-income countries[Title/Abstract] OR low-income countries[Title/Abstract] OR underserved countries[Title/Abstract] OR under served countries[Title/Abstract] OR deprived countries[Title/Abstract] OR poor countries[Title/Abstract] OR poorer countries[Title/Abstract] OR poorest countries[Title/Abstract] OR developing nation[Title/Abstract] OR less developed nation[Title/Abstract] OR third world nation[Title/Abstract] OR under developed nation[Title/Abstract] OR middle income nation[Title/Abstract] OR low income nation[Title/Abstract] OR middle-income nation[Title/Abstract] OR low-income nation[Title/Abstract] OR underserved nation[Title/Abstract] OR under served nation[Title/Abstract] OR deprived nation[Title/Abstract] OR poor nation[Title/Abstract] OR poorer nation[Title/Abstract] OR poorest nation[Title/Abstract] OR developing nations[Title/Abstract] OR less developed nations[Title/Abstract] OR third world nations[Title/Abstract] OR under developed nations[Title/Abstract] OR middle income nations[Title/Abstract] OR low income nations[Title/Abstract] OR middle-income nations[Title/Abstract] OR low-income nations[Title/Abstract] OR underserved nations[Title/Abstract] OR under served nations[Title/Abstract] OR deprived nations[Title/Abstract] OR poor nations[Title/Abstract] OR poorer nations[Title/Abstract] OR poorest nations[Title/Abstract] OR developing state[Title/Abstract] OR less developed state[Title/Abstract] OR third world state[Title/Abstract] OR under developed state[Title/Abstract] OR middle income state[Title/Abstract] OR low income state[Title/Abstract] OR middle-income state[Title/Abstract] OR low-income state[Title/Abstract] OR underserved state[Title/Abstract] OR under served state[Title/Abstract] OR deprived state[Title/Abstract] OR poor state[Title/Abstract] OR poorer state[Title/Abstract] OR poorest state[Title/Abstract] OR developing states[Title/Abstract] OR less developed states[Title/Abstract] OR third world states[Title/Abstract] OR under developed states[Title/Abstract] OR middle income states[Title/Abstract] OR low income states[Title/Abstract] OR middle-income states[Title/Abstract] OR low-income states[Title/Abstract] OR underserved states[Title/Abstract] OR under served states[Title/Abstract] OR deprived states[Title/Abstract] OR poor states[Title/Abstract] OR poorer states[Title/Abstract] OR poorest states[Title/Abstract] OR developing population[Title/Abstract] OR less developed population[Title/Abstract] OR third world population[Title/Abstract] OR under developed population[Title/Abstract] OR middle income population[Title/Abstract] OR low income population[Title/Abstract] OR middle-income population[Title/Abstract] OR low-income population[Title/Abstract] OR middle-income

population[Title/Abstract] OR low-income population[Title/Abstract] OR underserved population[Title/Abstract] OR under served population[Title/Abstract] OR deprived population[Title/Abstract] OR poor population[Title/Abstract] OR poorer population[Title/Abstract] OR poorest population[Title/Abstract] OR developing populations[Title/Abstract] OR less developed populations[Title/Abstract] OR third world populations[Title/Abstract] OR under developed populations[Title/Abstract] OR middle income populations[Title/Abstract] OR low income populations[Title/Abstract] OR middle-income populations[Title/Abstract] OR low-income populations[Title/Abstract] OR underserved populations[Title/Abstract] OR under served populations[Title/Abstract] OR deprived populations[Title/Abstract] OR poor populations[Title/Abstract] OR poorer populations[Title/Abstract] OR poorest populations[Title/Abstract] OR LMIC[Title/Abstract] OR LMICs[Title/Abstract] OR LMICS[Title/Abstract] OR LAMIC[Title/Abstract] OR poor[Title/Abstract] OR deprived[Title/Abstract] OR South America[Title/Abstract] OR Latin America[Title/Abstract] OR Latin Americas[Title/Abstract] OR Latin American[Title/Abstract] OR Central America[Title/Abstract] OR Central American[Title/Abstract] OR Africa[Title/Abstract] OR African[Title/Abstract] OR Asia[Title/Abstract] OR Asian[Title/Abstract] OR Afghanistan[Title/Abstract] OR Afghan[Title/Abstract] OR Albania[Title/Abstract] OR Albanian[Title/Abstract] OR Algeria[Title/Abstract] OR Algerian[Title/Abstract] OR American Samoa[Title/Abstract] OR Angola[Title/Abstract] OR Angolan[Title/Abstract] OR Antigua and Barbuda[Title/Abstract] OR Antiguan[Title/Abstract] OR Barbudans[Title/Abstract] OR Argentina[Title/Abstract] OR Argentine[Title/Abstract] OR Armenia[Title/Abstract] OR Armenian[Title/Abstract] OR Azerbaijan[Title/Abstract] OR Azerbaijani[Title/Abstract] OR Bahrain[Title/Abstract] OR Bahraini[Title/Abstract] OR Bangladesh[Title/Abstract] OR Bangladeshi[Title/Abstract] OR Barbados[Title/Abstract] OR Barbadian[Title/Abstract] OR Belarus[Title/Abstract] OR Belarusian[Title/Abstract] OR Belize[Title/Abstract] OR Belizean[Title/Abstract] OR Benin[Title/Abstract] OR Beninese[Title/Abstract] OR Bhutan[Title/Abstract] OR Bhutanese[Title/Abstract] OR Bolivia[Title/Abstract] OR Bolivian[Title/Abstract] OR Bosnia[Title/Abstract] OR Bosnian[Title/Abstract] OR Herzegovina[Title/Abstract] OR Herzegovinian[Title/Abstract] OR Bosnia and Herzegovina[Title/Abstract] OR Botswana[Title/Abstract] OR Batswana[Title/Abstract] OR Brazil[Title/Abstract] OR Brazilian[Title/Abstract] OR Bulgaria[Title/Abstract] OR Bulgarian[Title/Abstract] OR Burkina[Title/Abstract] OR Burkinabe[Title/Abstract] OR Burma[Title/Abstract] OR Burmese[Title/Abstract] OR Burundi[Title/Abstract] OR Burundian[Title/Abstract] OR Cape Verde[Title/Abstract] OR Cape Verdian[Title/Abstract] OR Cambodia[Title/Abstract] OR Cambodian[Title/Abstract] OR Cameroon[Title/Abstract] OR Cameroonian[Title/Abstract] OR Central African Republic[Title/Abstract] OR Central African[Title/Abstract] OR Chad[Title/Abstract] OR Chadian[Title/Abstract] OR Chile[Title/Abstract] OR Chilean[Title/Abstract] OR China[Title/Abstract] OR Chinese[Title/Abstract] OR Colombia[Title/Abstract] OR Colombian[Title/Abstract] OR Comoros[Title/Abstract] OR Comoran[Title/Abstract] OR Congo[Title/Abstract] OR Congolese[Title/Abstract] OR Costa Rica[Title/Abstract] OR Costa Rican[Title/Abstract] OR Côte d'Ivo\*[Title/Abstract] OR Cote d'Ivo\*[Title/Abstract] OR

<p>Ivorian[Title/Abstract] OR Croatia[Title/Abstract] OR Croatian[Title/Abstract] OR Cuba[Title/Abstract] OR Cuban[Title/Abstract] OR Czech[Title/Abstract] OR Djibouti[Title/Abstract] OR Dominican[Title/Abstract] OR Ecuador[Title/Abstract] OR Ecuadorean[Title/Abstract] OR Egypt[Title/Abstract] OR Egyptian[Title/Abstract] OR El Salvador[Title/Abstract] OR Salvadorian[Title/Abstract] OR Equatorial Guinea[Title/Abstract] OR Equatorial Guinean[Title/Abstract] OR Equatoguinean[Title/Abstract] OR Eritrea[Title/Abstract] OR Eritrean[Title/Abstract] OR Estonia[Title/Abstract] OR Estonian[Title/Abstract] OR eSwatini[Title/Abstract] OR iSwati[Title/Abstract] OR Ethiopia[Title/Abstract] OR Ethiopian[Title/Abstract] OR Fiji[Title/Abstract] OR Fijian[Title/Abstract] OR Gabon[Title/Abstract] OR Gabonese[Title/Abstract] OR Gambia[Title/Abstract] OR Gambian[Title/Abstract] OR Georgia[Title/Abstract] OR Georgian[Title/Abstract] OR Ghana[Title/Abstract] OR Ghanaian[Title/Abstract] OR Grenada[Title/Abstract] OR Grenadian[Title/Abstract] OR Guatemala[Title/Abstract] OR Guatemalan[Title/Abstract] OR Guinea[Title/Abstract] OR Guinean[Title/Abstract] OR Guinea-Bissau[Title/Abstract] OR Guinea-Bissauan[Title/Abstract] OR Guyana[Title/Abstract] OR Guyanese[Title/Abstract] OR Haiti[Title/Abstract] OR Haitian[Title/Abstract] OR Honduras[Title/Abstract] OR Honduran[Title/Abstract] OR Hungary[Title/Abstract] OR Hungarian[Title/Abstract] OR India[Title/Abstract] OR Indian[Title/Abstract] OR Indonesia[Title/Abstract] OR Indonesian[Title/Abstract] OR Iran[Title/Abstract] OR Iranian[Title/Abstract] OR Islamic Republic[Title/Abstract] OR Iraq[Title/Abstract] OR Iraqi[Title/Abstract] OR Jamaica[Title/Abstract] OR Jamaican[Title/Abstract] OR Jordan[Title/Abstract] OR Jordanian[Title/Abstract] OR Kazakhstan[Title/Abstract] OR Kazakhstani[Title/Abstract] OR Kenya[Title/Abstract] OR Kenyan[Title/Abstract] OR Kiribati[Title/Abstract] OR I-Kiribati[Title/Abstract] OR Koran[Title/Abstract] OR Korean[Title/Abstract] OR Kosovo[Title/Abstract] OR Kosovar[Title/Abstract] OR Kyrgyz Republic[Title/Abstract] OR Kyrgyz[Title/Abstract] OR Kyrgyzstani[Title/Abstract] OR Laos[Title/Abstract] OR Lao[Title/Abstract] OR Laotian[Title/Abstract] OR Latvia[Title/Abstract] OR Latvian[Title/Abstract] OR Lebanon[Title/Abstract] OR Lebanese[Title/Abstract] OR Lesotho[Title/Abstract] OR Mosotho[Title/Abstract] OR Liberia[Title/Abstract] OR Liberian[Title/Abstract] OR Libya[Title/Abstract] OR Libyan[Title/Abstract] OR Lithuania[Title/Abstract] OR Lithuanian[Title/Abstract] OR Madagascar[Title/Abstract] OR Malagasy[Title/Abstract] OR Malawi[Title/Abstract] OR Malawian[Title/Abstract] OR Malaysia[Title/Abstract] OR Malaysian[Title/Abstract] OR Maldives[Title/Abstract] OR Maldivian[Title/Abstract] OR Mali[Title/Abstract] OR Malian[Title/Abstract] OR Malta[Title/Abstract] OR Maltese[Title/Abstract] OR Marshall Islands[Title/Abstract] OR Marshallese[Title/Abstract] OR Mauritania[Title/Abstract] OR Mauritanian[Title/Abstract] OR Mauritius[Title/Abstract] OR Mauritian[Title/Abstract] OR Mayotte[Title/Abstract] OR Mahorais[Title/Abstract] OR Mexico[Title/Abstract] OR Mexican[Title/Abstract] OR Micronesia[Title/Abstract] OR Micronesian[Title/Abstract] OR Moldova[Title/Abstract] OR Moldovan[Title/Abstract] OR Mongolia[Title/Abstract] OR Mongolian[Title/Abstract] OR Montenegro[Title/Abstract] OR Montenegrin[Title/Abstract] OR Morocco[Title/Abstract] OR</p>
--

Moroccan[Title/Abstract] OR Mozambique[Title/Abstract] OR Mozambican[Title/Abstract] OR Myanmar[Title/Abstract] OR Burmese[Title/Abstract] OR Namibia[Title/Abstract] OR Namibian[Title/Abstract] OR Nauru[Title/Abstract] OR Nauruan[Title/Abstract] OR Nepal[Title/Abstract] OR Nepalese[Title/Abstract] OR Nicaragua[Title/Abstract] OR Nicaraguan[Title/Abstract] OR Niger[Title/Abstract] OR Nigerien[Title/Abstract] OR Nigeria[Title/Abstract] OR Nigerian[Title/Abstract] OR Macedonia[Title/Abstract] OR Macedonian[Title/Abstract] OR Northern Mariana Islands[Title/Abstract] OR Oman[Title/Abstract] OR Omani[Title/Abstract] OR Pakistan[Title/Abstract] OR Pakistani[Title/Abstract] OR Palau[Title/Abstract] OR Palauan[Title/Abstract] OR Panama[Title/Abstract] OR Panamanian[Title/Abstract] OR Papua New Guinea[Title/Abstract] OR Papua New Guinean[Title/Abstract] OR New Guinea[Title/Abstract] OR New Guinean[Title/Abstract] OR Paraguay[Title/Abstract] OR Paraguayan[Title/Abstract] OR Peru[Title/Abstract] OR Peruvian[Title/Abstract] OR Philippines[Title/Abstract] OR Filipino[Title/Abstract] OR Poland[Title/Abstract] OR Polish[Title/Abstract] OR Puerto Rico[Title/Abstract] OR Puerto Rican[Title/Abstract] OR Romania[Title/Abstract] OR Romanian[Title/Abstract] OR Russia[Title/Abstract] OR Russian[Title/Abstract] OR Rwanda[Title/Abstract] OR Rwandan[Title/Abstract] OR Samoa[Title/Abstract] OR Samoan[Title/Abstract] OR São Tomé and Príncipe[Title/Abstract] OR Sao Tomean[Title/Abstract] OR Saudi Arabia[Title/Abstract] OR Saudi[Title/Abstract] OR Senegal[Title/Abstract] OR Senegalese[Title/Abstract] OR Serbia[Title/Abstract] OR Serbian[Title/Abstract] OR Serbia and Montenegro[Title/Abstract] OR Montenegrin[Title/Abstract] OR Seychelles[Title/Abstract] OR Seychellois[Title/Abstract] OR Sierra Leone[Title/Abstract] OR Sierra Leonean[Title/Abstract] OR Slovakia[Title/Abstract] OR Slovak[Title/Abstract] OR Solomon Islands[Title/Abstract] OR Solomon Islander[Title/Abstract] OR Somalia[Title/Abstract] OR Somali[Title/Abstract] OR South Africa[Title/Abstract] OR South African[Title/Abstract] OR South Sudan[Title/Abstract] OR South Sudanese[Title/Abstract] OR Sri Lanka[Title/Abstract] OR Sri Lankan[Title/Abstract] OR Kitts and Nevis[Title/Abstract] OR Kittitian[Title/Abstract] OR Nevisian[Title/Abstract] OR St. Lucia[Title/Abstract] OR Saint Lucia[Title/Abstract] OR Vincent and the Grenadines[Title/Abstract] OR Vincentian[Title/Abstract] OR Sudan[Title/Abstract] OR Sudanese[Title/Abstract] OR Suriname[Title/Abstract] OR Surinamer[Title/Abstract] OR Syrian Arab Republic[Title/Abstract] OR Syrian[Title/Abstract] OR Tajikistan[Title/Abstract] OR Tajik[Title/Abstract] OR Tanzania[Title/Abstract] OR Tanzanian[Title/Abstract] OR Thailand[Title/Abstract] OR Thai[Title/Abstract] OR Timor-Leste[Title/Abstract] OR Timorese[Title/Abstract] OR Togo[Title/Abstract] OR Togolese[Title/Abstract] OR Tonga[Title/Abstract] OR Tongan[Title/Abstract] OR Trinidad[Title/Abstract] OR Tobago[Title/Abstract] OR Trinidadian[Title/Abstract] OR Tobagonian[Title/Abstract] OR Tunisia[Title/Abstract] OR Tunisian[Title/Abstract] OR Turkey[Title/Abstract] OR Turk[Title/Abstract] OR Turkmenistan[Title/Abstract] OR Turkmen[Title/Abstract] OR Tuvalu[Title/Abstract] OR Tuvaluan[Title/Abstract] OR Uganda[Title/Abstract] OR Ugandan[Title/Abstract] OR Ukraine[Title/Abstract] OR Ukrainian[Title/Abstract] OR Uruguay[Title/Abstract] OR Uruguayan[Title/Abstract] OR USSR[Title/Abstract] OR
---

	<p>Uzbekistan[Title/Abstract] OR Uzbek[Title/Abstract] OR Uzbekistani[Title/Abstract] OR Vanuatu[Title/Abstract] OR Ni-Vanuatu[Title/Abstract] OR Venezuela[Title/Abstract] OR Venezuelan[Title/Abstract] OR Vietnam[Title/Abstract] OR Vietnamese[Title/Abstract] OR West Bank[Title/Abstract] OR Gaza[Title/Abstract] OR Yemen[Title/Abstract] OR Yemeni[Title/Abstract] OR Yemenite[Title/Abstract] OR Yugoslavia[Title/Abstract] OR Yugoslav[Title/Abstract] OR Zambia[Title/Abstract] OR Zambian[Title/Abstract] OR Zimbabwe[Title/Abstract] OR Zimbabwean[Title/Abstract]</p>
Cash transfer	<p>social assistance[Title/Abstract] OR social policy[Title/Abstract] OR social policies[Title/Abstract] OR social welfare[Title/Abstract] OR social protection[Title/Abstract] OR poverty alleviation[Title/Abstract] OR poverty reduction[Title/Abstract] OR family policy[Title/Abstract] OR family policies[Title/Abstract] OR family welfare[Title/Abstract] OR public assistance[Title/Abstract] OR public policy[Title/Abstract] OR public policies[Title/Abstract] OR cash transfer[Title/Abstract] OR cash transfers[Title/Abstract] OR conditional[Title/Abstract] OR unconditional[Title/Abstract] OR maternal welfare[Title/Abstract] OR financial support[Title/Abstract] OR experimental social security[Title/Abstract] OR poverty reduction scheme[Title/Abstract] OR financial transfer[Title/Abstract] OR payment transfer[Title/Abstract] OR payment transfers[Title/Abstract] OR monetary transfer[Title/Abstract] OR monetary transfers[Title/Abstract] OR money transfer[Title/Abstract] OR money transfers[Title/Abstract] OR financial measure[Title/Abstract] OR financial measures[Title/Abstract] OR cash measure[Title/Abstract] OR cash measures[Title/Abstract] OR payment measure[Title/Abstract] OR payment measures[Title/Abstract] OR monetary measure[Title/Abstract] OR monetary measures[Title/Abstract] OR money measure[Title/Abstract] OR money measures[Title/Abstract] OR financial incentive[Title/Abstract] OR financial incentive[Title/Abstract] OR cash incentive[Title/Abstract] OR cash incentives[Title/Abstract] OR payment incentive[Title/Abstract] OR payment incentives[Title/Abstract] OR monetary incentive[Title/Abstract] OR monetary incentives[Title/Abstract] OR money incentive[Title/Abstract] OR money incentives[Title/Abstract] OR financial allowance[Title/Abstract] OR financial allowances[Title/Abstract] OR cash allowance[Title/Abstract] OR cash allowances[Title/Abstract] OR payment allowance[Title/Abstract] OR payment allowances[Title/Abstract] OR monetary allowance[Title/Abstract] OR monetary allowances[Title/Abstract] OR money allowance[Title/Abstract] OR money allowance[Title/Abstract] OR financial exclusion[Title/Abstract] OR financial exclusion[Title/Abstract] OR cash exclusion[Title/Abstract] OR cash exclusions[Title/Abstract] OR payment exclusion[Title/Abstract] OR payment exclusions[Title/Abstract] OR monetary exclusion[Title/Abstract] OR monetary exclusions[Title/Abstract] OR money exclusion[Title/Abstract] OR money exclusions[Title/Abstract] OR financial reform[Title/Abstract] OR financial reforms[Title/Abstract] OR cash reform[Title/Abstract] OR cash reforms[Title/Abstract] OR payment reform[Title/Abstract] OR payment reforms[Title/Abstract] OR monetary reform[Title/Abstract] OR monetary reforms[Title/Abstract] OR money reform[Title/Abstract] OR money reforms[Title/Abstract] OR financial gain[Title/Abstract] OR financial gains[Title/Abstract] OR cash gain[Title/Abstract] OR cash gains[Title/Abstract] OR payment gain[Title/Abstract] OR payment gains[Title/Abstract] OR monetary gain[Title/Abstract] OR monetary gains[Title/Abstract] OR money gain[Title/Abstract] OR money gains[Title/Abstract] OR financial credit[Title/Abstract] OR financial credits[Title/Abstract] OR cash</p>

	credit[Title/Abstract] OR cash credits[Title/Abstract] OR payment credit[Title/Abstract] OR payment credits[Title/Abstract] OR money credit[Title/Abstract] OR money credits[Title/Abstract] OR monetary credit[Title/Abstract] OR monetary credits[Title/Abstract] OR financial benefit[Title/Abstract] OR financial benefits[Title/Abstract] OR cash benefit[Title/Abstract] OR cash benefits[Title/Abstract] OR payment benefit[Title/Abstract] OR payment benefits[Title/Abstract] OR monetary benefit[Title/Abstract] OR monetary benefits[Title/Abstract] OR money benefit[Title/Abstract] OR money benefits[Title/Abstract]
Mental health	mental health[Title/Abstract] OR mental disorders[Title/Abstract] OR mental disorder*[Title/Abstract] OR mental illness[Title/Abstract] OR mental illnesses[Title/Abstract] OR mental problem[Title/Abstract] OR mental problems[Title/Abstract] OR behaviour disorder[Title/Abstract] OR behaviour disorders[Title/Abstract] OR behavior disorder[Title/Abstract] OR behavior disorders[Title/Abstract] OR psychiatric mental disorder[Title/Abstract] OR psychiatric mental disorders[Title/Abstract] OR psychiatric diagnosis[Title/Abstract] OR psychiatric diagnoses[Title/Abstract] OR depression[Title/Abstract] OR anxiety[Title/Abstract] OR personality disorder[Title/Abstract] OR personality disorders[Title/Abstract] OR bipolar[Title/Abstract] OR schizophrenia[Title/Abstract] OR mood disorder[Title/Abstract] OR mood disorders[Title/Abstract] OR eating disorder[Title/Abstract] OR eating disorders[Title/Abstract] OR suicide[Title/Abstract] OR alcoholism[Title/Abstract] OR drinking behaviour[Title/Abstract] OR drinking behaviours[Title/Abstract] OR drinking behavior[Title/Abstract] OR drinking behaviors[Title/Abstract] OR drug taking[Title/Abstract] OR addiction[Title/Abstract] OR addictive behaviour[Title/Abstract] OR addictive behaviours[Title/Abstract] OR addictive behavior[Title/Abstract] OR addictive behaviors [Title/Abstract] OR positive mental health[Title/Abstract] OR wellbeing[Title/Abstract] OR well-being[Title/Abstract] OR self-esteem[Title/Abstract] OR self esteem[Title/Abstract] OR confidence[Title/Abstract]
Controlled design	randomised[Title/Abstract] OR randomized[Title/Abstract] OR randomisation[Title/Abstract] OR randomization[Title/Abstract] OR longitudinal[Title/Abstract] OR placebo[Title/Abstract] OR single blind[Title/Abstract] OR double blind[Title/Abstract] OR triple blind[Title/Abstract] OR treble blind[Title/Abstract] OR single-blind[Title/Abstract] OR double-blind[Title/Abstract] OR controlled before[Title/Abstract] OR before and after[Title/Abstract] OR randomised controlled trial[Title/Abstract] OR randomized controlled trial[Title/Abstract] OR RCT[Title/Abstract] OR RCTs[Title/Abstract] OR repeated measure[Title/Abstract] OR repeated measures[Title/Abstract] OR trial[Title/Abstract] OR follow-up assessment[Title/Abstract] OR follow up assessment[Title/Abstract] OR follow-up assessments[Title/Abstract] OR follow up assessments[Title/Abstract] OR follow-up study[Title/Abstract] OR follow up study[Title/Abstract] OR follow-up studies[Title/Abstract] OR follow up studies[Title/Abstract] OR secondary analyses[Title/Abstract] OR secondary analysis[Title/Abstract] OR intervention study[Title/Abstract] OR intervention studies[Title/Abstract] OR intervention effect[Title/Abstract] OR intervention effects[Title/Abstract] OR treatment evaluation[Title/Abstract] OR treatment evaluations[Title/Abstract] OR treatment outcome[Title/Abstract] OR treatment outcomes[Title/Abstract] OR evaluation study[Title/Abstract] OR evaluation studies[Title/Abstract] OR cohort study[Title/Abstract] OR cohort studies[Title/Abstract] OR comparative group[Title/Abstract] OR comparative groups[Title/Abstract] OR comparison group[Title/Abstract] OR comparison groups[Title/Abstract] OR comparative study[Title/Abstract] OR comparative

	studies[Title/Abstract] OR comparison study[Title/Abstract] OR comparison studies[Title/Abstract] OR control group[Title/Abstract] OR control groups[Title/Abstract]
--	--

**MeSH terms**

Concept	MeSH term
LMIC	"developing countries"[MeSH Terms] OR "medically underserved area"[MeSH Terms] OR "poverty areas"[MeSH Terms] OR "poverty"[MeSH Terms] OR "americas"[MeSH Terms] OR "africa"[MeSH Terms] OR "asia"[MeSH Terms] OR "south america"[MeSH Terms] OR "latin america"[MeSH Terms] OR "central america"[MeSH Terms] OR "afghanistan"[MeSH Terms] OR "albania"[MeSH Terms] OR "algeria"[MeSH Terms] OR "american samoa"[MeSH Terms] OR "angola"[MeSH Terms] OR "antigua and barbuda"[MeSH Terms] AND "antigua and barbuda"[MeSH Terms] OR "argentina"[MeSH Terms] OR "armenia"[MeSH Terms] OR "azerbaijan"[MeSH Terms] OR "bahrain"[MeSH Terms] OR "bangladesh"[MeSH Terms] OR "barbados"[MeSH Terms] OR "republic of belarus"[MeSH Terms] OR "belize"[MeSH Terms] OR "benin"[MeSH Terms] OR "bhutan"[MeSH Terms] OR "bolivia"[MeSH Terms] OR "bosnia and herzegovina"[MeSH Terms] AND "bosnia and herzegovina"[MeSH Terms] OR "botswana"[MeSH Terms] OR "brazil"[MeSH Terms] OR "bulgaria"[MeSH Terms] OR "burkina faso"[MeSH Terms] OR "burundi"[MeSH Terms] OR "cabo verde"[MeSH Terms] OR "cambodia"[MeSH Terms] OR "cameroon"[MeSH Terms] OR "central african republic"[MeSH Terms] OR "chad"[MeSH Terms] OR "chile"[MeSH Terms] OR "china"[MeSH Terms] OR "colombia"[MeSH Terms] OR "comoros"[MeSH Terms] OR "congo"[MeSH Terms] OR "costa rica"[MeSH Terms] OR "cote d'ivoire"[MeSH Terms] OR "croatia"[MeSH Terms] OR "cuba"[MeSH Terms] OR "czech republic"[MeSH Terms] OR "djibouti"[MeSH Terms] OR "dominica"[MeSH Terms] OR "dominican republic"[MeSH Terms] OR "ecuador"[MeSH Terms] OR "egypt"[MeSH Terms] OR "el salvador"[MeSH Terms] OR "equatorial guinea"[MeSH Terms] OR "eritrea"[MeSH Terms] OR "estonia"[MeSH Terms] OR Eswatini[MeSH Terms] OR "ethiopia"[MeSH Terms] OR "fiji"[MeSH Terms] OR "gabon"[MeSH Terms] OR "gambia"[MeSH Terms] OR "gambia"[MeSH Terms] OR ("georgia"[MeSH Terms] OR "georgia (republic)"[MeSH Terms]) OR "ghana"[MeSH Terms] OR "grenada"[MeSH Terms] OR "guatemala"[MeSH Terms] OR "guinea"[MeSH Terms] OR "guinea-bissau"[MeSH Terms] OR "guyana"[MeSH Terms] OR "haiti"[MeSH Terms] OR "honduras"[MeSH Terms] OR "hungary"[MeSH Terms] OR "india"[MeSH Terms] OR "indonesia"[MeSH Terms] OR "iran"[MeSH Terms] OR "iraq"[MeSH Terms] OR "united kingdom"[MeSH Terms] OR "jamaica"[MeSH Terms] OR "jordan"[MeSH Terms] OR "kazakhstan"[MeSH Terms] OR "kenya"[MeSH Terms] OR "micronesia"[MeSH Terms] OR "korea"[MeSH Terms] OR "kosovo"[MeSH Terms] OR "kyrgyzstan"[MeSH Terms] OR "laos"[MeSH Terms] OR "latvia"[MeSH Terms] OR "lebanon"[MeSH Terms] OR "lesotho"[MeSH Terms] OR "liberia"[MeSH Terms] OR "libya"[MeSH Terms] OR "lithuania"[MeSH Terms] OR "madagascar"[MeSH Terms] OR "malawi"[MeSH Terms] OR "malaysia"[MeSH Terms] OR "indian ocean islands"[MeSH Terms] OR "mali"[MeSH Terms] OR "malta"[MeSH Terms] OR "micronesia"[MeSH Terms] OR "mauritania"[MeSH Terms] OR "mauritius"[MeSH Terms] OR "comoros"[MeSH Terms] OR "mexico"[MeSH Terms] OR "micronesia"[MeSH

	Terms] OR "moldova"[MeSH Terms] OR "micronesia"[MeSH Terms] OR "mongolia"[MeSH Terms] OR "montenegro"[MeSH Terms] OR "morocco"[MeSH Terms] OR "mozambique"[MeSH Terms] OR "myanmar"[MeSH Terms] OR "namibia"[MeSH Terms] OR "micronesia"[MeSH Terms] OR "nepal"[MeSH Terms] OR "nicaragua"[MeSH Terms] OR "niger"[MeSH Terms] OR "nigeria"[MeSH Terms] OR North Macedonia[MeSH Terms] OR "micronesia"[MeSH Terms] OR "oman"[MeSH Terms] OR "pakistan"[MeSH Terms] OR "palau"[MeSH Terms] OR "panama"[MeSH Terms] OR "papua new guinea"[MeSH Terms] OR "paraguay"[MeSH Terms] OR "peru"[MeSH Terms] OR "philippines"[MeSH Terms] OR "poland"[MeSH Terms] OR "puerto rico"[MeSH Terms] OR "romania"[MeSH Terms] OR "russia"[MeSH Terms] OR "russia"[MeSH Terms] OR "rwanda"[MeSH Terms] OR "samoa"[MeSH Terms] OR "saudi arabia"[MeSH Terms] OR "senegal"[MeSH Terms] OR "serbia"[MeSH Terms] OR "serbia"[MeSH Terms] AND "montenegro"[MeSH Terms] OR "seychelles"[MeSH Terms] OR "sierra leone"[MeSH Terms] OR "slovakia"[MeSH Terms] OR "slovakia"[MeSH Terms] OR "melanesia"[MeSH Terms] OR "somalia"[MeSH Terms] OR "south africa"[MeSH Terms] OR "south sudan"[MeSH Terms] OR "sri lanka"[MeSH Terms] AND "saint kitts and nevis"[MeSH Terms] OR "saint lucia"[MeSH Terms] AND "saint vincent and the grenadines"[MeSH Terms] OR "sudan"[MeSH Terms] OR "suriname"[MeSH Terms] OR "syria"[MeSH Terms] OR "syria"[MeSH Terms] OR "tajikistan"[MeSH Terms] OR "tanzania"[MeSH Terms] OR "thailand"[MeSH Terms] OR "indonesia"[MeSH Terms] OR "togo"[MeSH Terms] OR "tonga"[MeSH Terms] OR "trinidad and tobago"[MeSH Terms] AND "trinidad and tobago"[MeSH Terms] OR "trinidad and tobago"[MeSH Terms] OR "trinidad and tobago"[MeSH Terms] OR "tunisia"[MeSH Terms] OR "turkey"[MeSH Terms] OR "turkmenistan"[MeSH Terms] OR "micronesia"[MeSH Terms] OR "uganda"[MeSH Terms] OR "ukraine"[MeSH Terms] OR "uruguay"[MeSH Terms] OR "ussr"[MeSH Terms] OR "uzbekistan"[MeSH Terms] OR "vanuatu"[MeSH Terms] OR "venezuela"[MeSH Terms] OR "vietnam"[MeSH Terms] OR "middle east"[MeSH Terms] OR "yugoslavia"[MeSH Terms] OR "zambia"[MeSH Terms] OR "zimbabwe"[MeSH Terms]
Cash transfer	"social welfare"[MeSH Terms] OR "public assistance"[MeSH Terms] OR "public policy"[MeSH Terms] OR "social security"[MeSH Terms] OR ("economics"[Subheading] OR ("government"[MeSH Terms] OR government[Text Word])) AND (("medical subject headings"[MeSH Terms] OR MeSH[Text Word]) AND Terms[All Fields]) OR "financial support"[MeSH Terms] OR "maternal welfare"[MeSH Terms] OR "motivation"[MeSH Terms] OR "relief work"[MeSH Terms] OR "relief work"[MeSH Terms]
Mental health	"mental disorders"[MeSH Terms] OR "mental health"[MeSH Terms] OR "behavioral symptoms"[MeSH Terms] OR "child behavior"[MeSH Terms] OR "drinking behavior"[MeSH Terms] OR "drug-seeking behavior"[MeSH Terms] OR "alcoholism"[MeSH Terms] OR "behavior"[MeSH Terms] OR "substance-related disorders"[MeSH Terms] AND "feeding and eating disorders"[MeSH Terms] OR "schizophrenia"[MeSH Terms] OR "personality disorders"[MeSH Terms] OR "depressive disorder"[MeSH Terms] OR "psychiatry"[MeSH Terms] OR "wellbeing"[MeSH Terms]
Controlled design	"random allocation"[MeSH Terms] OR controlled clinical trial[MeSH Terms] OR "cohort studies"[MeSH Terms] OR "randomized controlled trials as topic"[MeSH Terms] OR "non-randomized controlled trials as topic"[MeSH Terms] OR "longitudinal studies"[MeSH Terms] OR "clinical trials as topic"[MeSH Terms] OR "control groups"[MeSH Terms] OR "double-blind



method"[MeSH Terms] OR "single-blind method"[MeSH Terms] OR comparative study[MeSH Terms] OR evaluation studies[MeSH Terms] OR "placebos"[MeSH Terms] OR "controlled before-after studies"[MeSH Terms] OR "program evaluation"[MeSH Terms]
--

**All databases to be included:**

Medline, PsycInfo, PubMed Cochrane Central, Econlit, Social Science Research Network, ISI Web of Science, Social Sciences Citation Index (within Web of Science), Scielo, AfricaWide and CINAHL

**Search Strategy Medline and PubMed Cochrane Central - same as PubMed****Search Strategy PsycINFO, CINAHL, Africa Wide Information, Econlit, Medline (EBSCOhost) from 2000 to present**

Concept	Keywords
LMIC	TI ((developing OR "less* developed" OR "third world" OR "under developed" OR "middle income" OR "low income" OR middle-income OR low-income OR underserved OR "under served" OR deprived OR poor*) N1 (count* OR nation* OR state* OR population) OR LMIC* OR poor OR deprived OR "South America*" OR "Latin America*" OR "Central America*" OR Africa OR Asia) OR AB((developing OR "less* developed" OR "third world" OR "under developed" OR "middle income" OR "low income" OR middle-income OR low-income OR underserved OR "under served" OR deprived OR poor*) N1 (count* OR nation OR nations OR state OR states OR population) OR LMIC* OR poor OR deprived OR "South America*" OR "Latin America*" OR "Central America*" OR Africa* OR Asia*) OR TI(Afghan* OR Albania* OR Algeria* OR "American Samoa*" OR Angola* OR "Antigua and Barbuda*" OR Argentina* OR Armenia* OR Azerbaijan* OR Bahrain* OR Bangladesh* OR Barbados* OR Belarus* OR Belize* OR Benin* OR Bhutan* OR Bolivia* OR Bosnia OR Herzegovin* OR "Bosnia and Herzegovina*" OR Botswana OR Batswana OR Brazil* OR Bulgaria* OR "Burkina*" OR Burma* OR Burundi* OR "Cape Verde*" OR "Cabo Verde*" OR Cambodia* OR Cameroon* OR "Central African Republic" OR "Central African*" OR Chad* OR Chile* OR Chin* OR Colombia* OR Comor* OR Congo* OR "Costa Rica*" OR "Côte d'Ivo*" OR "Cote d'Ivo*" OR Ivorian* OR Croatia* OR Cuba* OR "Czech" OR Djibouti* OR Dominica* OR Ecuador* OR Egypt* OR "Arab Rep*" OR "El Salvador*" OR "Equatorial Guinea*" OR Eritrea* OR Estonia* OR eSwatini OR IiSwati OR Ethiopia* OR Fiji* OR Gabon* OR The Gambia* OR Gambia* OR Georgia* OR Ghana* OR Grenad* OR Guatemala* OR Guinea* OR "Guinea-Bissau*" OR "Guinea Bissau*" OR Guyan* OR Haiti* OR Hondur* OR Hungar* OR India* OR Indonesia* OR Iran* OR "Islamic Rep*" OR Iraq* OR "Isle of Man*" OR Jamaica* OR Jordan* OR Kazakhstan* OR Kenya* OR Kiribati* OR Korea* OR Kosov* OR Kyrgyz* OR Lao* OR Latvia* OR Leban* OR Lesotho* OR Liberia* OR Libya* OR Lithuania* OR Madagascar* OR Malawi* OR Malaysia* OR Maldiv* OR Mali* OR Malt* OR "Marshall Island" OR Marshallese* OR Mauritania* OR Mauriti* OR Mayotte* OR Mexic* OR Micronesia* OR Moldova* OR Mongolia* OR Montenegr* OR Morocc* OR Mozambi* OR Myanmar* OR Namibia* OR Nauru* OR Nepal* OR Nicaragua* OR Niger* OR Nigeria* OR Macedonia* OR "Mariana Island*" OR Oman* OR Pakistan* OR Palau* OR Panama* OR "Papua New Guinea*" OR "New Guinea*" OR Paraguay* OR Peru* OR Philippin* OR Poland* OR Polish OR "Puerto Ric*" OR Romania* OR Russia* OR Rwanda* OR Samoa* OR "São Tomé and Príncipe*" OR "Sao Tome*" OR "Saudi Arabia*" OR Senegal* OR Serbia* OR "Serbia and

	<p>Montenegr* OR Seychell* OR "Sierra Leone*" OR "Slovak*" OR "Solomon Island*" OR Somali* OR "South Africa*" OR "South Sudan*" OR "Sri Lanka*" OR "Kitts and Nevis" OR Kittitian* OR Nevisian* OR "St. Lucia*" OR "Saint Lucia*" OR "Vincent and the Grenadines" OR Vincentian* OR Sudan* OR Suriname* OR "Syrian Arab Rep*" OR Tajik* OR Tanzania* OR Thai* OR Timor* OR Leste* OR Togo* OR Tonga* OR Trinidad* OR Tobago* OR Tunisia* OR Turk* OR Turkmen* OR Tuvalu* OR Uganda* OR Ukrain* OR Uruguay* OR USSR* OR Uzbek* OR Vanuatu OR Ni-Vanuatu OR Venezuela* OR Vietnam* OR "West Bank*" OR Gaza* OR "Yemen*" OR Yugoslav* OR Zambia* OR Zimbabwe*) OR AB(Afghan* OR Albania* OR Algeria* OR "American Samoa*" OR Angola* OR "Antigua and Barbuda*" OR Argentin* OR Armenia* OR Azerbaijan* OR Bahrain* OR Bangladesh* OR Barbados* OR Belarus* OR Belize* OR Benin* OR Bhutan* OR Bolivia* OR Bosnia OR Herzegovin* OR "Bosnia and Herzegovina*" OR Botswana OR Batswana OR Brazil* OR Bulgaria* OR "Burkina*" OR Burma* OR Burundi* OR "Cape Verde*" OR "Cabo Verde*" OR Cambodia* OR Cameroon* OR "Central African Republic" OR "Central African*" OR Chad* OR Chile* OR Chin* OR Colombia* OR Comor* OR Congo* OR "Costa Rica*" OR "Côte d'Ivo*" OR "Cote d'Ivo*" OR Ivorian* OR Croatia* OR Cuba* OR "Czech" OR Djibouti* OR Dominica* OR Ecuador* OR Egypt* OR "Arab Rep*" OR "El Salvador*" OR "Equatorial Guinea*" OR Eritrea* OR Estonia* OR eSwatini OR IiSwati OR Ethiopia* OR Fiji* OR Gabon* OR The Gambia* OR Gambia* OR Georgia* OR Ghana* OR Grenad* OR Guatemala* OR Guinea* OR "Guinea-Bissau*" OR "Guinea Bissau*" OR Guyan* OR Haiti* OR Hondur* OR Hungar* OR India* OR Indonesia* OR Iran* OR "Islamic Rep*" OR Iraq* OR "Isle of Man*" OR Jamaica* OR Jordan* OR Kazakhstan* OR Kenya* OR Kiribati* OR Korea* OR Kosov* OR Kyrgyz* OR Lao* OR Latvia* OR Leban* OR Lesotho* OR Liberia* OR Libya* OR Lithuania* OR Madagascar* OR Malawi* OR Malaysia* OR Maldiv* OR Mali* OR Malt* OR "Marshall Island" OR Marshallese* OR Mauritania* OR Mauriti* OR Mayotte* OR Mexic* OR Micronesia* OR Moldova* OR Mongolia* OR Montenegr* OR Morocc* OR Mozambi* OR Myanmar* OR Namibia* OR Nauru* OR Nepal* OR Nicaragua* OR Niger* OR Nigeria* OR Macedonia* OR "Mariana Island*" OR Oman* OR Pakistan* OR Palau* OR Panama* OR "Papua New Guinea*" OR "New Guinea*" OR Paraguay* OR Peru* OR Philippin* OR Poland* OR Polish OR "Puerto Ric*" OR Romania* OR Russia* OR Rwanda* OR Samoa* OR "São Tomé and Príncipe*" OR "Sao Tome*" OR "Saudi Arabia*" OR Senegal* OR Serbia* OR "Serbia and Montenegr*" OR Seychell* OR "Sierra Leone*" OR Slovak* OR "Solomon Island*" OR Somali* OR "South Africa*" OR "South Sudan*" OR "Sri Lanka*" OR "Kitts and Nevis" OR Kittitian* OR Nevisian* OR "St Lucia*" OR "Saint Lucia*" OR "Vincent and the Grenadines" OR Vincentian* OR Sudan* OR Suriname* OR "Syrian Arab Rep*" OR Tajik* OR Tanzania* OR Thai* OR Timor* OR Leste* OR Togo* OR Tonga* OR Trinidad* OR Tobago* OR Tunisia* OR Turk* OR Turkmen* OR Tuvalu* OR Uganda* OR Ukrain* OR Uruguay* OR USSR* OR Uzbek* OR Vanuatu OR Ni-Vanuatu OR Venezuela* OR Vietnam* OR "West Bank*" OR Gaza* OR "Yemen*" OR Yugoslav* OR Zambia* OR Zimbabwe*)</p>
Cash transfer	<p>TI(social N1 (assistance OR polic* OR welfare* OR protection) OR "poverty alleviation" OR "poverty reduction" OR (family N1 (polic* OR welfare)) OR (public N1 (assistance OR polic*)) OR "cash transfer" OR (conditional OR unconditional) N1 ("cash transfer") OR conditional OR unconditional OR "maternal welfare" OR "financial support" OR "experimental social security" OR "poverty reduction scheme" OR (financial OR cash OR pay* OR monetary OR money) N1(transfer* OR measure* OR incentive* OR allowance* OR</p>

	exclu* OR reform* OR gain* OR credit* OR benefit*) OR AB(social N1 (assistance OR polic* OR welfare* OR protection) OR "poverty alleviation" OR "poverty reduction" OR (family N1 (polic* OR welfare)) OR (public N1 (assistance OR polic*)) OR "cash transfer" OR (conditional OR unconditional) N1 ("cash transfer") OR conditional OR unconditional OR "maternal welfare" OR "financial support" OR "experimental social security" OR "poverty reduction scheme" OR (financial OR cash OR pay* OR monetary OR money) N1(transfer* OR measure* OR incentive* OR allowance* OR exclu* OR reform* OR gain* OR credit* OR benefit*))
Mental health	TI (mental N1 (health OR disorder* OR illness* OR problem*) OR "behaviour disorder*" OR "psychiatric mental disorder*" OR "psychiatric diagnos*" OR depression OR anxiety OR "personality disorder*" OR bipolar OR schizophrenia OR "mood disorder*" OR "eating disorder*" OR alcoholism OR "drinking behavi*" OR "drug taking" OR addiction OR "addictive behavi*" OR "positive mental health" OR wellbeing OR self-esteem OR "self esteem" OR confidence) OR AB (mental N1 (health OR disorder* OR illness* OR problem*) OR "behaviour disorder*" OR "psychiatric mental disorder*" OR "psychiatric diagnos*" OR depression OR anxiety OR "personality disorder*" OR bipolar OR schizophrenia OR "mood disorder*" OR suicide* OR "eating disorder*" OR alcoholism OR "drinking behavi*" OR "drug taking" OR addiction OR "addictive behavi*" OR "positive mental health" OR wellbeing OR well-being OR self-esteem OR "self esteem" OR confidence)
Controlled design	TI (random* OR placebo* OR (single OR double OR triple OR treble) N1 (blind*) OR single-blind* OR double-blind* OR "controlled before" OR "intervention* stud*" OR longitud* OR "before and after" OR "repeat* measure*" OR "randomized* control* trial*" OR "RCT*" OR trial OR "follow-up assessment*" OR "follow up assessment*" OR "follow-up stud*" OR "follow up stud*" OR "secondary analys*" OR randomiz* OR ((intervention* OR treatment*) N1 (evaluat* OR effect* OR outcome* OR stud*)) OR "evaluation* stud*" OR "cohort stud*" OR "compar* group*" OR "compar* stud*" OR "control group*") OR AB (random* OR placebo* OR (single OR double OR triple OR treble) N1 (blind*) OR single-blind* OR double-blind* OR "controlled before" OR "before and after" OR "repeat* measure*" OR "randomized* control* trial*" OR "RCT*" OR trial OR "follow-up assessment*" OR "follow up assessment*" OR "follow-up stud*" OR "follow up stud*" OR "secondary analys*" OR randomiz* OR ((intervention* OR treatment*) N1 (evaluat* OR effect* OR outcome* OR stud*)) OR "evaluation* stud*" OR "cohort stud*" OR "compar* group*" OR "compar* stud*" OR "control group*")

### Search Strategy CINAHL (2000 to present) – index terms

Concept	Keywords
LMIC	(MH "Low and Middle Income Countries") OR (MH "Developed Countries") OR (MH "Developing Countries") OR (MH "Africa+") OR (MH "Asia+") OR (MH "Central America+") OR (MH "Latin America") OR (MH "South America+") OR (MH "Mexico") OR (MH "West Indies+") OR (MH "Albania") OR (MH "Bosnia-Herzegovina") OR (MH "Croatia") OR (MH "Czech Republic") OR (MH "Hungary") OR (MH "Macedonia (Republic)") OR (MH "Romania") OR (MH "Serbia") OR (MH "Slovakia") OR (MH "Arabia") OR (MH "Czechoslovakia") OR (MH "Korea") OR (MH "Afghanistan") OR (MH "Bahrain") OR (MH "Egypt") OR (MH "Iran") OR (MH "Iraq") OR (MH "Israel") OR (MH "Jordan") OR (MH "Lebanon") OR (MH "Libya") OR (MH "Oman") OR (MH "Saudi Arabia") OR (MH "Syria") OR (MH "Turkey") OR

	(MH "United Arab Emirates") OR (MH "Yemen") OR (MH "New Guinea") OR (MH "USSR+") OR (MH "Indian Ocean Islands+") OR (MH "Micronesia+")
Cash transfer	(MH "Social Welfare+") OR (MH "Public Assistance+") OR (MH "Public Policy+") OR (MH "Economic and Social Security") OR (MH "Insurance, Unemployment")
Mental health	(MH "Behavioral and Mental Disorders+") OR (MH "Child Behavior+") OR (MH "Coping+") OR (MH "Diagnosis, Psychosocial+") OR (MH "Drinking Behavior+") OR (MH "Personality+") OR (MH "Substance Abuse+") OR (MH "Adolescent Behavior") OR (MH "Disruptive Behavior") OR (MH "Mental Health") OR (MH "Psychological Well-Being")
Controlled design	(MH "Clinical Trials+") OR (MH "Community Trials") OR (MH "Controlled Before-After Studies") OR (MH "Nonrandomized Trials") OR (MH "Pretest-Posttest Design+") OR (MH "Double-Blind Studies") OR (MH "Single-Blind Studies") OR (MH "Triple-Blind Studies") OR (MH "Repeated Measures") OR (MH "Quasi-Experimental Studies")

### Search Strategy PsycINFO & Africa Wide (2000 to present) – index terms

Concept	Keywords
LMIC	(DE "Middle Income Level" OR DE "Lower Income Level" OR DE "Developing Countries" OR DE "Disadvantaged")
Cash transfer	(DE "Welfare Reform" OR DE "Community Welfare Services" OR DE "Social Support" OR DE "Economic Development" OR DE "Poverty" OR DE "Educational Financial Assistance" OR DE "Financial Services" OR DE "Economic Security" OR DE "Welfare Reform" OR DE "Economic Security" OR DE "Government Programs" OR DE "Social Security" OR DE "Upward Bound" OR DE "Welfare Services (Government)")
Mental health	(DE "Suicide" OR DE "Attempted Suicide" OR DE "Suicidality" OR DE "Affective Disorders" OR DE "Disruptive Mood Dysregulation Disorder" OR DE "Major Depression" OR DE "Seasonal Affective Disorder" OR DE "Anxiety Disorders" OR DE "Castration Anxiety" OR DE "Death Anxiety" OR DE "Generalized Anxiety Disorder" OR DE "Obsessive Compulsive Disorder" OR DE "Panic Attack" OR DE "Panic Disorder" OR DE "Phobias" OR DE "Separation Anxiety Disorder" OR DE "Trichotillomania" OR DE "Autism Spectrum Disorders" OR DE "Autistic Traits" OR DE "Bipolar Disorder" OR DE "Bipolar I Disorder" OR DE "Bipolar II Disorder" OR DE "Cyclothymic Disorder" OR DE "Mania" OR DE "Chronic Mental Illness" OR DE "Chronic Psychosis" OR DE "Dissociative Disorders" OR DE "Depersonalization" OR DE "Depersonalization/Derealization Disorder" OR DE "Dissociative Amnesia" OR DE "Dissociative Identity Disorder" OR DE "Fugue Reaction" OR DE "Eating Disorders" OR DE "Anorexia Nervosa" OR DE "Binge Eating Disorder" OR DE "Bulimia" OR DE "Feeding Disorders" OR DE "Hyperphagia" OR DE "Kleine Levin Syndrome" OR DE "Pica" OR DE "Purging (Eating Disorders)" OR DE "Rumination (Eating)" OR DE "Neurocognitive Disorders" OR DE "Consciousness Disorders" OR DE "Delirium" OR DE "Dementia" OR DE "Memory Disorders" OR DE "Neurodevelopmental Disorders" OR DE "Attention Deficit Disorder" OR DE "Autism Spectrum Disorders" OR DE "Developmental Disabilities" OR DE "Disruptive Behavior Disorders" OR DE "Emotional and Behavioral Disorders" OR DE "Intellectual Development Disorder" OR DE "Learning Disorders" OR DE "Learning Disabilities" OR DE "Reading Disabilities" OR DE "Personality Disorders" OR DE "Antisocial Personality Disorder" OR DE "Avoidant Personality Disorder" OR DE "Borderline Personality Disorder" OR DE

	"Dependent Personality Disorder" OR DE "Histrionic Personality Disorder" OR DE "Narcissistic Personality Disorder" OR DE "Obsessive Compulsive Personality Disorder" OR DE "Paranoid Personality Disorder" OR DE "Passive Aggressive Personality Disorder" OR DE "Sadomasochistic Personality" OR DE "Schizoid Personality Disorder" OR DE "Schizotypal Personality Disorder" OR DE "Psychosis" OR DE "Acute Psychosis" OR DE "Affective Psychosis" OR DE "Alcoholic Psychosis" OR DE "Capgras Syndrome" OR DE "Childhood Psychosis" OR DE "Chronic Psychosis" OR DE "Experimental Psychosis" OR DE "Hallucinosi s" OR DE "Paranoia (Psychosis)" OR DE "Postpartum Psychosis" OR DE "Reactive Psychosis" OR DE "Schizophrenia" OR DE "Senile Psychosis" OR DE "Toxic Psychoses" OR DE "Somatoform Disorders" OR DE "Body Dysmorphic Disorder" OR DE "Conversion Disorder" OR DE "Factitious Disorders" OR DE "Hypochondriasis" OR DE "Hysteria" OR DE "Neurasthenia" OR DE "Neurodermatitis" OR DE "Somatization Disorder" OR DE "Somatoform Pain Disorder" OR DE "Stress and Trauma Related Disorders" OR DE "Acute Stress Disorder" OR DE "Adjustment Disorders" OR DE "Attachment Disorders" OR DE "Posttraumatic Stress Disorder" OR DE "Substance Related and Addictive Disorders" OR DE "Nonsubstance Related Addictions" OR DE "Substance Use Disorder" OR DE "Conduct Disorder" OR DE "Disruptive Behavior Disorders" OR DE "Conduct Disorder" OR DE "Oppositional Defiant Disorder" OR DE "Impulse Control Disorders" OR DE "Explosive Disorder" OR DE "Juvenile Delinquency" OR DE "Predelinquent Youth" OR DE "Female Delinquency" OR DE "Male Delinquency" OR DE "Aggressive Behavior" OR DE "Aggressive Driving Behavior" OR DE "Attack Behavior" OR DE "Coercion" OR DE "Conflict" OR DE "Microaggression" OR DE "Relational Aggression" OR DE "Threat" OR DE "Antisocial Behavior" OR DE "Child Neglect" OR DE "Corruption" OR DE "Criminal Behavior" OR DE "Cruelty" OR DE "Dangerousness" OR DE "Elder Abuse" OR DE "Emotional Abuse" OR DE "Harassment" OR DE "Juvenile Delinquency" OR DE "Patient Abuse" OR DE "Persecution" OR DE "Physical Abuse" OR DE "Prisoner Abuse" OR DE "Recidivism" OR DE "Runaway Behavior" OR DE "Sexual Abuse" OR DE "Terrorism" OR DE "Torture" OR DE "Verbal Abuse" OR DE "Violence" OR DE "Behavior Problems" OR DE "Tantrums" OR DE "Well Being" OR DE "Spiritual Well Being" OR DE "Mental Health" OR DE "Mental Status" OR DE "Cognitive Ability" OR DE "Cognitive Impairment" OR DE "Brain Training" OR DE "Mathematical Ability" OR DE "Reading Ability" OR DE "Spatial Ability" OR DE "Verbal Ability" OR DE "Executive Function" OR DE "Cognitive Control" OR DE "Set Shifting" OR DE "Task Switching")
Controlled design	(DE "Cohort Analysis" OR DE "Followup Studies" OR DE "Longitudinal Studies" OR DE "Prospective Studies" OR DE "Repeated Measures" OR DE "Randomized Controlled Trials" OR DE "Randomized Clinical Trials" OR DE "Placebo" OR DE "Random Sampling" OR DE "Treatment Effectiveness Evaluation")

### Search strategy ProQuest from 2000 to present

Concept	Keywords
LMIC	tiab((developing OR "less* developed" OR "third world" OR "under developed" OR "middle income" OR "low income" OR middle-income OR low-income OR underserved OR "under served" OR deprived OR poor*) NEAR/1 (countr* OR nation* OR state* OR population) OR LMIC* OR poor OR deprived OR "South America" OR "Latin America*" OR "Central America*" OR Africa OR Asia) OR ab((developing OR "less* developed" OR "third world" OR "under

developed" OR "middle income" OR "low income" OR middle-income OR low-income OR underserved OR "under served" OR deprived OR poor\*) NEAR/1 (count\* OR nation OR nations OR state OR states OR population) OR LMIC\* OR poor OR deprived OR "South America\*" OR "Latin America\*" OR "Central America\*" OR Africa\* OR Asia\*) OR ti(Afghan\* OR Albania\* OR Algeria\* OR "American Samoa\*" OR Angola\* OR "Antigua and Barbuda\*" OR Argentin\* OR Armenia\* OR Azerbaijan\* OR Bahrain\* OR Bangladesh\* OR Barbados\* OR Belarus\* OR Belize\* OR Benin\* OR Bhutan\* OR Bolivia\* OR Bosnia OR Herzegovin\* OR "Bosnia and Herzegovina\*" OR Botswana OR Batswana OR Brazil\* OR Bulgaria\* OR "Burkina\*" OR Burma\* OR Burundi\* OR "Cape Verde\*" OR "Cabo Verde\*" OR Cambodia\* OR Cameroon\* OR "Central African Republic" OR "Central African\*" OR Chad\* OR Chile\* OR Chin\* OR Colombia\* OR Comor\* OR Congo\* OR "Costa Rica\*" OR "Côte d'Ivo\*" OR "Cote d'Ivo\*" OR Ivorian\* OR Croatia\* OR Cuba\* OR "Czech" OR Djibouti\* OR Dominica\* OR Ecuador\* OR Egypt\* OR "Arab Rep\*" OR "El Salvador\*" OR "Equatorial Guinea\*" OR Eritrea\* OR Estonia\* OR eSwatini OR liSwati OR Ethiopia\* OR Fiji\* OR Gabon\* OR The Gambia\* OR Gambia\* OR Georgia\* OR Ghana\* OR Grenad\* OR Guatemala\* OR Guinea\* OR "Guinea-Bissau\*" OR "Guinea Bissau\*" OR Guyan\* OR Haiti\* OR Hondur\* OR Hungar\* OR India\* OR Indonesia\* OR Iran\* OR "Islamic Rep\*" OR Iraq\* OR "Isle of Man\*" OR Jamaica\* OR Jordan\* OR Kazakhstan\* OR Kenya\* OR Kiribati\* OR Korea\* OR Kosov\* OR Kyrgyz\* OR Lao\* OR Latvia\* OR Leban\* OR Lesotho\* OR Liberia\* OR Libya\* OR Lithuania\* OR Madagascar\* OR Malawi\* OR Malaysia\* OR Maldiv\* OR Mali\* OR Malt\* OR "Marshall Island" OR Marshallese\* OR Mauritania\* OR Mauriti\* OR Mayotte\* OR Mexic\* OR Micronesia\* OR Moldova\* OR Mongolia\* OR Montenegr\* OR Morocc\* OR Mozambi\* OR Myanmar\* OR Namibia\* OR Nauru\* OR Nepal\* OR Nicaragua\* OR Niger\* OR Nigeria\* OR Macedonia\* "Mariana Island\*" OR Oman\* OR Pakistan\* OR Palau\* OR Panama\* OR "Papua New Guinea\*" OR "New Guinea\*" OR Paraguay\* OR Peru\* OR Philippin\* OR Poland\* OR Polish OR "Puerto Ric\*" OR Romania\* OR Russia\* OR Rwanda\* OR Samoa\* OR "São Tomé and Príncipe\*" OR "Sao Tome\*" OR "Saudi Arabia\*" OR Senegal\* OR Serbia\* OR "Serbia and Montenegr\*" OR Seychell\* OR "Sierra Leone\*" OR Slovak\* OR "Solomon Island\*" OR Somali\* OR "South Africa\*" OR "South Sudan\*" OR "Sri Lanka\*" OR "Kitts and Nevis" OR Kittitian\* OR Nevisian\* OR "St Lucia\*" OR "Saint Lucia\*" OR "Vincent and the Grenadines" OR Vincentian\* OR Sudan\* OR Suriname\* OR "Syrian Arab Rep\*" OR Tajik\* OR Tanzania\* OR Thai\* OR Timor\* OR Leste\* OR Togo\* OR Tonga\* OR Trinidad\* OR Tobago\* OR Tunisia\* OR Turk\* OR Turkmen\* OR Tuvalu\* OR Uganda\* OR Ukrain\* OR Uruguay\* OR USSR\* OR Uzbek\* OR Vanuatu OR Ni-Vanuatu OR Venezuela\* OR Vietnam\* OR "West Bank\*" OR Gaza\* OR "Yemen\*" OR Yugoslav\* OR Zambia\* OR Zimbabwe\*) OR AB(Afghan\* OR Albania\* OR Algeria\* OR "American Samoa\*" OR Angola\* OR "Antigua and Barbuda\*" OR Argentin\* OR Armenia\* OR Azerbaijan\* OR Bahrain\* OR Bangladesh\* OR Barbados\* OR Belarus\* OR Belize\* OR Benin\* OR Bhutan\* OR Bolivia\* OR Bosnia OR Herzegovin\* OR "Bosnia and Herzegovina\*" OR Botswana OR Batswana OR Brazil\* OR Bulgaria\* OR "Burkina\*" OR Burma\* OR Burundi\* OR "Cape Verde\*" OR "Cabo Verde\*" OR Cambodia\* OR Cameroon\* OR "Central African Republic" OR "Central African\*" OR Chad\* OR Chile\* OR Chin\* OR Colombia\* OR Comor\* OR Congo\* OR "Costa Rica\*" OR

	<p>“Côte d'Ivo*” OR “Cote d'Ivo*” OR Ivorian* OR Croatia* OR Cuba* OR “Czech” OR Djibouti* OR Dominica* OR Ecuador* OR Egypt* OR “Arab Rep*” OR “El Salvador*” OR “Equatorial Guinea*” OR Eritrea* OR Estonia* OR eSwatini OR IiSwati OR Ethiopia* OR Fiji* OR Gabon* OR The Gambia* OR Gambia* OR Georgia* OR Ghana* OR Grenad* OR Guatemala* OR Guinea* OR “Guinea-Bissau*” OR “Guinea Bissau*” OR Guyan* OR Haiti* OR Hondur* OR Hungar* OR India* OR Indonesia* OR Iran* OR “Islamic Rep*” OR Iraq* OR “Isle of Man*” OR Jamaica* OR Jordan* OR Kazakhstan* OR Kenya* OR Kiribati* OR Korea* OR Kosov* OR Kyrgyz* OR Lao* OR Latvia* OR Leban* OR Lesotho* OR Liberia* OR Libya* OR Lithuania* OR Madagascar* OR Malawi* OR Malaysia* OR Maldiv* OR Mali* OR Malt* OR “Marshall Island” OR Marshallese* OR Mauritania* OR Mauriti* OR Mayotte* OR Mexic* OR Micronesia* OR Moldova* OR Mongolia* OR Montenegr* OR Morocc* OR Mozambi* OR Myanmar* OR Namibia* OR Nauru* OR Nepal* OR Nicaragua* OR Niger* OR Nigeria* OR Macedonia* “Mariana Island*” OR Oman* OR Pakistan* OR Palau* OR Panama* OR “Papua New Guinea*” OR “New Guinea*” OR Paraguay* OR Peru* OR Philippin* OR Poland* OR Polish OR “Puerto Ric*” OR Romania* OR Russia* OR Rwanda* OR Samoa* OR “São Tomé and Príncipe*” OR “Sao Tome*” OR “Saudi Arabia*” OR Senegal* OR Serbia* OR “Serbia and Montenegr*” OR Seychell* OR “Sierra Leone*” OR Slovak* OR “Solomon Island*” OR Somali* OR “South Africa*” OR “South Sudan*” OR “Sri Lanka*” OR “Kitts and Nevis” OR Kittitian* OR Nevisian* OR “St Lucia*” OR “Saint Lucia*” OR “Vincent and the Grenadines” OR Vincentian* OR Sudan* OR Suriname* OR “Syrian Arab Rep*” OR Tajik* OR Tanzania* OR Thai* OR Timor* OR Leste* OR Togo* OR Tonga* OR Trinidad* OR Tobago* OR Tunisia* OR Turk* OR Turkmen* OR Tuvalu* OR Uganda* OR Ukrain* OR Uruguay* OR USSR* OR Uzbek* OR Vanuatu OR Ni-Vanuatu OR Venezuela* OR Vietnam* OR “West Bank*” OR Gaza* OR “Yemen*” OR Yugoslav* OR Zambia* OR Zimbabwe*)</p>
Cash transfer	<p>tiab(social NEAR/1 (assistance OR polic* OR welfare* OR protection) OR “poverty alleviation” OR “poverty reduction” OR (family NEAR/1 (polic* OR welfare)) OR (public NEAR/1 (assistance OR polic*))) OR “cash transfer” OR conditional OR unconditional OR “maternal welfare” OR “financial support” OR “experimental social security” OR “poverty reduction scheme” OR (financial OR cash OR pay* OR monetary OR money) NEAR/1(transfer* OR measure* OR incentive* OR allowance* OR exclu* OR reform* OR gain* OR credit* OR benefit*))</p>
Mental health	<p>tiab(mental NEAR/1 (health OR disorder* OR illness* OR problem*) OR “behaviour disorder*” OR “psychiatric mental disorder*” OR “psychiatric diagnos*” OR depression OR anxiety OR “personality disorder*” OR bipolar OR schizophrenia OR “mood disorder*” OR suicid* OR “eating disorder*” OR alcoholism OR “drinking behavi*” OR “drug taking” OR addiction OR “addictive behavi*” OR “positive mental health” OR wellbeing OR well-being OR self-esteem OR “self esteem” OR confidence)</p>
Controlled design	<p>tiab(random* OR placebo* OR (single OR double OR triple OR treble) NEAR/1 (blind*) OR single-blind* OR double-blind* OR longitud* OR “controlled before” OR “before and after” OR “repeat* measure*” OR “randomized* control* trial*” OR “RCT*” OR trial OR “follow-up assessment*” OR “follow up assessment*” OR “follow-up stud*” OR “follow up stud*” OR “secondary analys*” OR randomiz* OR</p>

	((intervention* OR treatment) NEAR/1 (evaluat* OR effect* OR outcome* OR stud*)) OR "evaluation* stud*" OR "cohort stud*" OR "compar* group*" OR "compar* stud*" OR "control group*")
--	---

**Social Sciences Citation Index (ISI Web of Science) from 2002 to present**

Concept	Keywords
LMIC	TI = ((developing OR "less* developed" OR "third world" OR "under developed" OR "middle income" OR "low income" OR middle-income OR low-income OR underserved OR "under served" OR deprived OR poor*) NEAR/1 (count* OR nation* OR state* OR population) OR LMIC* OR poor OR deprived OR "South America" OR "Latin America*" OR "Central America*" OR Africa OR Asia) OR TS = ((developing OR "less* developed" OR "third world" OR "under developed" OR "middle income" OR "low income" OR middle-income OR low-income OR underserved OR "under served" OR deprived OR poor*) NEAR/1 (count* OR nation OR nations OR state OR states OR population) OR LMIC* OR poor OR deprived OR "South America*" OR "Latin America*" OR "Central America*" OR Africa* OR Asia*) OR TI = (Afghan* OR Albania* OR Algeria* OR "American Samoa*" OR Angola* OR "Antigua and Barbuda*" OR Argentin* OR Armenia* OR Azerbaijan* OR Bahrain* OR Bangladesh* OR Barbados* OR Belarus* OR Belize* OR Benin* OR Bhutan* OR Bolivia* OR Bosnia OR Herzegovin* OR "Bosnia and Herzegovina*" OR Botswana OR Batswana OR Brazil* OR Bulgaria* OR "Burkina*" OR Burma* OR Burundi* OR "Cape Verde*" OR "Cabo Verde*" OR Cambodia* OR Cameroon* OR "Central African Republic" OR "Central African*" OR Chad* OR Chile* OR Chin* OR Colombia* OR Comor* OR Congo* OR "Costa Rica*" OR "Côte d'Ivo*" OR "Cote d'Ivo*" OR Ivorian* OR Croatia* OR Cuba* OR "Czech" OR Djibouti* OR Dominica* OR Ecuador* OR Egypt* OR "Arab Rep*" OR "El Salvador*" OR "Equatorial Guinea*" OR Eritrea* OR Estonia* OR eSwatini OR IiSwati OR Ethiopia* OR Fiji* OR Gabon* OR The Gambia* OR Gambia* OR Georgia* OR Ghana* OR Grenad* OR Guatemala* OR Guinea* OR "Guinea-Bissau*" OR "Guinea Bissau*" OR Guyan* OR Haiti* OR Hondur* OR Hungar* OR India* OR Indonesia* OR Iran* OR "Islamic Rep*" OR Iraq* OR "Isle of Man*" OR Jamaica* OR Jordan* OR Kazakhstan* OR Kenya* OR Kiribati* OR Korea* OR Kosov* OR Kyrgyz* OR Lao* OR Latvia* OR Leban* OR Lesotho* OR Liberia* OR Libya* OR Lithuania* OR Madagascar* OR Malawi* OR Malaysia* OR Maldiv* OR Mali* OR Malt* OR "Marshall Island" OR Marshallese* OR Mauritania* OR Mauriti* OR Mayotte* OR Mexic* OR Micronesia* OR Moldova* OR Mongolia* OR Montenegr* OR Morocc* OR Mozambi* OR Myanmar* OR Namibia* OR Nauru* OR Nepal* OR Nicaragua* OR Niger* OR Nigeria* OR Macedonia* "Mariana Island*" OR Oman* OR Pakistan* OR Palau* OR Panama* OR "Papua New Guinea*" OR "New Guinea*" OR Paraguay* OR Peru* OR Philippin* OR Poland* OR Polish OR "Puerto Ric*" OR Romania* OR Russia* OR Rwanda* OR Samoa* OR "São Tomé and Príncipe*" OR "Sao Tome*" OR "Saudi Arabia*" OR Senegal* OR Serbia* OR "Serbia and Montenegr*" OR Seychell* OR "Sierra Leone*" OR Slovak* OR "Solomon Island*" OR Somali* OR "South Africa*" OR "South Sudan*" OR "Sri Lanka*" OR "Kitts and Nevis" OR Kittitian* OR Nevisian* OR "St Lucia*" OR "Saint Lucia*" OR "Vincent and the Grenadines" OR Vincentian* OR Sudan* OR Suriname* OR "Syrian Arab Rep*" OR Tajik* OR Tanzania* OR Thai* OR Timor* OR Leste* OR Togo*



	<p>OR Tonga* OR Trinidad* OR Tobago* OR Tunisia* OR Turk* OR Turkmen* OR Tuvalu* OR Uganda* OR Ukrain* OR Uruguay* OR USSR* OR Uzbek* OR Vanuatu OR Ni-Vanuatu OR Venezuela* OR Vietnam* OR “West Bank*” OR Gaza* OR “Yemen*” OR Yugoslav* OR Zambia* OR Zimbabwe*) OR TS = (Afghan* OR Albania* OR Algeria* OR “American Samoa*” OR Angola* OR “Antigua and Barbuda*” OR Argentin* OR Armenia* OR Azerbaijan* OR Bahrain* OR Bangladesh* OR Barbados* OR Belarus* OR Belize* OR Benin* OR Bhutan* OR Bolivia* OR Bosnia OR Herzegovin* OR “Bosnia and Herzegovina*” OR Botswana OR Batswana OR Brazil* OR Bulgaria* OR “Burkina*” OR Burma* OR Burundi* OR “Cape Verde*” OR “Cabo Verde*” OR Cambodia* OR Cameroon* OR “Central African Republic” OR “Central African*” OR Chad* OR Chile* OR Chin* OR Colombia* OR Comor* OR Congo* OR “Costa Rica*” OR “Côte d'Ivo*” OR “Cote d'Ivo*” OR Ivorian* OR Croatia* OR Cuba* OR “Czech” OR Djibouti* OR Dominica* OR Ecuador* OR Egypt* OR “Arab Rep*” OR “El Salvador*” OR “Equatorial Guinea*” OR Eritrea* OR Estonia* OR eSwatini OR iSwati OR Ethiopia* OR Fiji* OR Gabon* OR The Gambia* OR Gambia* OR Georgia* OR Ghana* OR Grenad* OR Guatemala* OR Guinea* OR “Guinea-Bissau*” OR “Guinea Bissau*” OR Guyan* OR Haiti* OR Hondur* OR Hungar* OR India* OR Indonesia* OR Iran* OR “Islamic Rep*” OR Iraq* OR “Isle of Man*” OR Jamaica* OR Jordan* OR Kazakhstan* OR Kenya* OR Kiribati* OR Korea* OR Kosov* OR Kyrgyz* OR Lao* OR Latvia* OR Leban* OR Lesotho* OR Liberia* OR Libya* OR Lithuania* OR Madagascar* OR Malawi* OR Malaysia* OR Maldiv* OR Mali* OR Malt* OR “Marshall Island” OR Marshallese* OR Mauritania* OR Mauriti* OR Mayotte* OR Mexic* OR Micronesia* OR Moldova* OR Mongolia* OR Montenegr* OR Morocc* OR Mozambi* OR Myanmar* OR Namibia* OR Nauru* OR Nepal* OR Nicaragua* OR Niger* OR Nigeria* OR Macedonia* “Mariana Island*” OR Oman* OR Pakistan* OR Palau* OR Panama* OR “Papua New Guinea*” OR “New Guinea*” OR Paraguay* OR Peru* OR Philippin* OR Poland* OR Polish OR “Puerto Ric*” OR Romania* OR Russia* OR Rwanda* OR Samoa* OR “São Tomé and Príncipe*” OR “Sao Tome*” OR “Saudi Arabia*” OR Senegal* OR Serbia* OR “Serbia and Montenegr*” OR Seychell* OR “Sierra Leone*” OR Slovak* OR “Solomon Island*” OR Somali* OR “South Africa*” OR “South Sudan*” OR “Sri Lanka*” OR “Kitts and Nevis” OR Kittitian* OR Nevisian* OR “St Lucia*” OR “Saint Lucia*” OR “Vincent and the Grenadines” OR Vincentian* OR Sudan* OR Suriname* OR “Syrian Arab Rep*” OR Tajik* OR Tanzania* OR Thai* OR Timor* OR Leste* OR Togo* OR Tonga* OR Trinidad* OR Tobago* OR Tunisia* OR Turk* OR Turkmen* OR Tuvalu* OR Uganda* OR Ukrain* OR Uruguay* OR USSR* OR Uzbek* OR Vanuatu OR Ni-Vanuatu OR Venezuela* OR Vietnam* OR “West Bank*” OR Gaza* OR “Yemen*” OR Yugoslav* OR Zambia* OR Zimbabwe*)</p>
Cash transfer	<p>TI = (social NEAR/1 (assistance OR polic* OR welfare* OR protection) OR “poverty alleviation” OR “poverty reduction” OR (family NEAR/1 (polic* OR welfare)) OR (public NEAR/1 (assistance OR polic*))) OR “cash transfer” OR (conditional OR unconditional) NEAR/1 (“cash transfer”) OR conditional OR unconditional OR “maternal welfare” OR “financial support” OR “experimental social security” OR “poverty reduction scheme” OR (financial OR cash OR pay* OR monetary OR money) NEAR/1(transfer* OR measure* OR incentive* OR allowance* OR exclu* OR reform* OR gain* OR credit* OR benefit*)) OR TS = (social NEAR/1 (assistance OR polic* OR welfare* OR protection) OR “poverty alleviation” OR “poverty reduction” OR (family NEAR/1 (polic* OR welfare)) OR (public NEAR/1 (assistance OR polic*))) OR “cash transfer” OR (conditional OR unconditional) NEAR/1 (“cash transfer”) OR conditional OR unconditional OR “maternal welfare” OR “financial support” OR “experimental</p>

	social security” OR “poverty reduction scheme” OR (financial OR cash OR pay* OR monetary OR money) NEAR/1(transfer* OR measure* OR incentive* OR allowance* OR exclu* OR reform* OR gain* OR credit* OR benefit*))
Mental health	TI = (mental NEAR/1 (health OR disorder* OR illness* OR problem*) OR “behaviour disorder*” OR “psychiatric mental disorder*” OR “psychiatric diagnos*” OR depression OR anxiety OR “personality disorder*” OR bipolar OR schizophrenia OR “mood disorder*” OR suicide* OR “eating disorder*” OR alcoholism OR “drinking behavi*” OR “drug taking” OR addiction OR “addictive behavi*” OR “positive mental health” OR wellbeing OR well-being OR self-esteem OR “self esteem” OR confidence) OR TS = (mental NEAR/1 (health OR disorder* OR illness* OR problem*) OR “behaviour disorder*” OR “psychiatric mental disorder*” OR “psychiatric diagnos*” OR depression OR anxiety OR “personality disorder*” OR bipolar OR schizophrenia OR “mood disorder*” OR suicid* OR “eating disorder*” OR alcoholism OR “drinking behavi*” OR “drug taking” OR addiction OR “addictive behavi*” OR “positive mental health” OR wellbeing OR well-being OR self-esteem OR “self esteem” OR confidence)
Controlled design	TI = (random* OR placebo* OR ((single OR double OR triple OR treble) NEAR/1 (blind*)) OR single-blind* OR double-blind* OR longitud* OR "controlled before" OR "before and after" OR "repeat* measure*” OR “randomized* control* trial*” OR RCT* OR trial OR "follow-up assessment*” OR "follow up assessment*” OR "follow-up stud*” OR "follow up stud*” OR "secondary analys*” OR randomiz* OR ((intervention* OR treatment) NEAR/1 (evaluat* OR effect* OR outcome* OR stud*)) OR “evaluat* stud*” OR “cohort stud*” OR “compar* group*” OR “compar* stud*” OR “control group*”) OR TS = (random* OR placebo* OR (single OR double OR triple OR treble) NEAR/1 (blind*) OR single-blind* OR double-blind* OR "controlled before" OR "before and after" OR "repeat* measure*” OR “randomized* control* trial*” OR “RCT*” OR trial OR "follow-up assessment*” OR "follow up assessment*” OR "follow-up stud*” OR "follow up stud*” OR "secondary analys*” OR randomiz* OR ((intervention* OR treatment) NEAR/1 (evaluat* OR effect* OR outcome* OR stud*)) OR “evaluat* stud*” OR “cohort stud*” OR “compar* group*” OR “compar* stud*” OR “control group*”)

**SciELO (Web of Science) from 2002 to present**

Concept	Keywords
LMIC	TI = ((developing OR "less* developed" OR "third world" OR "under developed" OR "middle income" OR "low income" OR middle-income OR low-income OR underserved OR "under served" OR deprived OR poor*) NEAR/1 (count* OR nation* OR state* OR population) OR LMIC* OR poor OR deprived OR “South America” OR “Latin America*” OR “Central America*” OR Africa OR Asia) OR TS = ((developing OR "less* developed" OR "third world" OR "under developed" OR "middle income" OR "low income" OR middle-income OR low-income OR underserved OR "under served" OR deprived OR poor*) NEAR/1 (count* OR nation OR nations OR state OR states OR population) OR LMIC* OR poor OR deprived OR “South America*” OR “Latin America*” OR “Central America*” OR Africa* OR Asia*) OR TI = (Afghan* OR Albania* OR Algeria* OR “American Samoa*” OR Angola* OR “Antigua and Barbuda*” OR Argentin* OR Armenia* OR Azerbaijan* OR Bahrain* OR Bangladesh* OR Barbados* OR Belarus* OR Belize* OR Benin* OR Bhutan* OR Bolivia* OR Bosnia OR Herzegovin* OR “Bosnia and Herzegovina*” OR Botswana OR Batswana OR Brazil* OR Bulgaria* OR “Burkina*” OR Burma* OR Burundi* OR “Cape Verde*” OR “Cabo Verde*” OR Cambodia* OR Cameroon* OR “Central African Republic” OR

“Central African\*” OR Chad\* OR Chile\* OR Chin\* OR Colombia\* OR Comor\* OR Congo\* OR “Costa Rica\*” OR “Côte d'Ivo\*” OR “Cote d'Ivo\*” OR Ivorian\* OR Croatia\* OR Cuba\* OR “Czech” OR Djibouti\* OR Dominica\* OR Ecuador\* OR Egypt\* OR “Arab Rep\*” OR “El Salvador\*” OR “Equatorial Guinea\*” OR Eritrea\* OR Estonia\* OR eSwatini OR IiSwati OR Ethiopia\* OR Fiji\* OR Gabon\* OR The Gambia\* OR Gambia\* OR Georgia\* OR Ghana\* OR Grenad\* OR Guatemala\* OR Guinea\* OR “Guinea-Bissau\*” OR “Guinea Bissau\*” OR Guyan\* OR Haiti\* OR Hondur\* OR Hungar\* OR India\* OR Indonesia\* OR Iran\* OR “Islamic Rep\*” OR Iraq\* OR “Isle of Man\*” OR Jamaica\* OR Jordan\* OR Kazakhstan\* OR Kenya\* OR Kiribati\* OR Korea\* OR Kosov\* OR Kyrgyz\* OR Lao\* OR Latvia\* OR Leban\* OR Lesotho\* OR Liberia\* OR Libya\* OR Lithuania\* OR Madagascar\* OR Malawi\* OR Malaysia\* OR Maldiv\* OR Mali\* OR Malt\* OR “Marshall Island” OR Marshallese\* OR Mauritania\* OR Mauriti\* OR Mayotte\* OR Mexic\* OR Micronesia\* OR Moldova\* OR Mongolia\* OR Montenegr\* OR Morocc\* OR Mozambi\* OR Myanmar\* OR Namibia\* OR Nauru\* OR Nepal\* OR Nicaragua\* OR Niger\* OR Nigeria\* OR Macedonia\* “Mariana Island\*” OR Oman\* OR Pakistan\* OR Palau\* OR Panama\* OR “Papua New Guinea\*” OR “New Guinea\*” OR Paraguay\* OR Peru\* OR Philippin\* OR Poland\* OR Polish OR “Puerto Ric\*” OR Romania\* OR Russia\* OR Rwanda\* OR Samoa\* OR “São Tomé and Príncipe\*” OR “Sao Tome\*” OR “Saudi Arabia\*” OR Senegal\* OR Serbia\* OR “Serbia and Montenegr\*” OR Seychell\* OR “Sierra Leone\*” OR Slovak\* OR “Solomon Island\*” OR Somali\* OR “South Africa\*” OR “South Sudan\*” OR “Sri Lanka\*” OR “Kitts and Nevis” OR Kittitian\* OR Nevisian\* OR “St Lucia\*” OR “Saint Lucia\*” OR “Vincent and the Grenadines” OR Vincentian\* OR Sudan\* OR Suriname\* OR “Syrian Arab Rep\*” OR Tajik\* OR Tanzania\* OR Thai\* OR Timor\* OR Leste\* OR Togo\* OR Tonga\* OR Trinidad\* OR Tobago\* OR Tunisia\* OR Turk\* OR Turkmen\* OR Tuvalu\* OR Uganda\* OR Ukrain\* OR Uruguay\* OR USSR\* OR Uzbek\* OR Vanuatu OR Ni-Vanuatu OR Venezuela\* OR Vietnam\* OR “West Bank\*” OR Gaza\* OR “Yemen\*” OR Yugoslav\* OR Zambia\* OR Zimbabwe\*) OR TS = (Afghan\* OR Albania\* OR Algeria\* OR “American Samoa\*” OR Angola\* OR “Antigua and Barbuda\*” OR Argentin\* OR Armenia\* OR Azerbaijan\* OR Bahrain\* OR Bangladesh\* OR Barbados\* OR Belarus\* OR Belize\* OR Benin\* OR Bhutan\* OR Bolivia\* OR Bosnia OR Herzegovin\* OR “Bosnia and Herzegovina\*” OR Botswana OR Batswana OR Brazil\* OR Bulgaria\* OR “Burkina\*” OR Burma\* OR Burundi\* OR “Cape Verde\*” OR “Cabo Verde\*” OR Cambodia\* OR Cameroon\* OR “Central African Republic” OR “Central African\*” OR Chad\* OR Chile\* OR Chin\* OR Colombia\* OR Comor\* OR Congo\* OR “Costa Rica\*” OR “Côte d'Ivo\*” OR “Cote d'Ivo\*” OR Ivorian\* OR Croatia\* OR Cuba\* OR “Czech” OR Djibouti\* OR Dominica\* OR Ecuador\* OR Egypt\* OR “Arab Rep\*” OR “El Salvador\*” OR “Equatorial Guinea\*” OR Eritrea\* OR Estonia\* OR eSwatini OR IiSwati OR Ethiopia\* OR Fiji\* OR Gabon\* OR The Gambia\* OR Gambia\* OR Georgia\* OR Ghana\* OR Grenad\* OR Guatemala\* OR Guinea\* OR “Guinea-Bissau\*” OR “Guinea Bissau\*” OR Guyan\* OR Haiti\* OR Hondur\* OR Hungar\* OR India\* OR Indonesia\* OR Iran\* OR “Islamic Rep\*” OR Iraq\* OR “Isle of Man\*” OR Jamaica\* OR Jordan\* OR Kazakhstan\* OR Kenya\* OR Kiribati\* OR Korea\* OR Kosov\* OR Kyrgyz\* OR Lao\* OR Latvia\* OR Leban\* OR Lesotho\* OR Liberia\* OR Libya\* OR Lithuania\* OR Madagascar\* OR Malawi\* OR Malaysia\* OR Maldiv\* OR Mali\* OR Malt\* OR “Marshall Island” OR Marshallese\* OR Mauritania\* OR Mauriti\* OR Mayotte\* OR Mexic\* OR Micronesia\* OR Moldova\* OR Mongolia\* OR Montenegr\* OR Morocc\* OR Mozambi\* OR Myanmar\* OR Namibia\* OR Nauru\* OR Nepal\* OR Nicaragua\* OR Niger\* OR Nigeria\* OR Macedonia\* “Mariana Island\*” OR

	Oman* OR Pakistan* OR Palau* OR Panama* OR "Papua New Guinea*" OR "New Guinea*" OR Paraguay* OR Peru* OR Philippin* OR Poland* OR Polish OR "Puerto Ric*" OR Romania* OR Russia* OR Rwanda* OR Samoa* OR "São Tomé and Príncipe*" OR "Sao Tome*" OR "Saudi Arabia*" OR Senegal* OR Serbia* OR "Serbia and Montenegr*" OR Seychell* OR "Sierra Leone*" OR Slovak* OR "Solomon Island*" OR Somali* OR "South Africa*" OR "South Sudan*" OR "Sri Lanka*" OR "Kitts and Nevis" OR Kittitian* OR Nevisian* OR "St Lucia*" OR "Saint Lucia*" OR "Vincent and the Grenadines" OR Vincentian* OR Sudan* OR Suriname* OR "Syrian Arab Rep*" OR Tajik* OR Tanzania* OR Thai* OR Timor* OR Leste* OR Togo* OR Tonga* OR Trinidad* OR Tobago* OR Tunisia* OR Turk* OR Turkmen* OR Tuvalu* OR Uganda* OR Ukrain* OR Uruguay* OR USSR* OR Uzbek* OR Vanuatu OR Ni-Vanuatu OR Venezuela* OR Vietnam* OR "West Bank*" OR Gaza* OR "Yemen*" OR Yugoslav* OR Zambia* OR Zimbabwe*)
Cash transfer	TI = (longitud* OR social NEAR/1 (assistance OR polic* OR welfare* OR protection) OR "poverty alleviation" OR "poverty reduction" OR (family NEAR/1 (polic* OR welfare)) OR (public NEAR/1 (assistance OR polic*)) OR "cash transfer" OR (conditional OR unconditional) NEAR/1 ("cash transfer") OR conditional OR unconditional OR "maternal welfare" OR "financial support" OR "experimental social security" OR "poverty reduction scheme" OR (financial OR cash OR pay* OR monetary OR money) NEAR/1(transfer* OR measure* OR incentive* OR allowance* OR exclu* OR reform* OR gain* OR credit* OR benefit*)) OR TS = (longitud* OR social NEAR/1 (assistance OR polic* OR welfare* OR protection) OR "poverty alleviation" OR "poverty reduction" OR (family NEAR/1 (polic* OR welfare)) OR (public NEAR/1 (assistance OR polic*)) OR "cash transfer" OR (conditional OR unconditional) NEAR/1 ("cash transfer") OR conditional OR unconditional OR "maternal welfare" OR "financial support" OR "experimental social security" OR "poverty reduction scheme" OR (financial OR cash OR pay* OR monetary OR money) NEAR/1(transfer* OR measure* OR incentive* OR allowance* OR exclu* OR reform* OR gain* OR credit* OR benefit*))
Mental health	TI = (mental NEAR/1 (health OR disorder* OR illness* OR problem*) OR "behaviour disorder*" OR "psychiatric mental disorder*" OR "psychiatric diagnos*" OR depression OR suicid* OR anxiety OR "personality disorder*" OR bipolar OR schizophrenia OR "mood disorder*" OR "eating disorder*" OR alcoholism OR "drinking behavi*" OR "drug taking" OR addiction OR "addictive behavi*" OR "positive mental health" OR wellbeing OR well-being OR self-esteem OR "self esteem" OR confidence) OR TS = (mental NEAR/1 (health OR disorder* OR illness* OR problem*) OR "behaviour disorder*" OR "psychiatric mental disorder*" OR "psychiatric diagnos*" OR depression OR suicid* OR anxiety OR "personality disorder*" OR bipolar OR schizophrenia OR "mood disorder*" OR "eating disorder*" OR alcoholism OR "drinking behavi*" OR "drug taking" OR addiction OR "addictive behavi*" OR "positive mental health" OR wellbeing OR well-being OR self-esteem OR "self esteem" OR confidence)
Controlled design	TI = (longitud* OR random* OR placebo* OR ((single OR double OR triple OR treble) NEAR/1 (blind*)) OR single-blind* OR double-blind* OR "controlled before" OR "before and after" OR "repeat* measure*" OR "randomized* control* trial*" OR RCT* OR trial OR "follow-up assessment*" OR "follow up assessment*" OR "follow-up stud*" OR "follow up stud*" OR "secondary analys*" OR randomiz* OR ((intervention* OR treatment) NEAR/1 (evaluat* OR effect* OR outcome* OR stud*)) OR "evaluat* stud*" OR "cohort stud*" OR "compar* group*" OR "compar* stud*" OR "control group*") OR TS = (longitud* OR random* OR placebo* OR (single OR double

	OR triple OR treble) NEAR/1 (blind*) OR single-blind* OR double-blind* OR "controlled before" OR "before and after" OR "repeat* measure*" OR "randomized* control* trial*" OR "RCT*" OR trial OR "follow-up assessment*" OR "follow up assessment*" OR "follow-up stud*" OR "follow up stud*" OR "secondary analys*" OR randomiz* OR ((intervention* OR treatment) NEAR/1 (evaluat* OR effect* OR outcome* OR stud*)) OR "evaluat* stud*" OR "cohort stud*" OR "compar* group*" OR "compar* stud*" OR "control group*")
--	---

### Google Scholar

In addition, we did a specific structured search of Google Scholar over the period between 2020 and 2000. Our search terms could appear anywhere in article, potentially therefore looking for these terms in the full text of reports. We broke our search down into 5 year time frames, and for each time frame looked at the first 500 records retrieved. All results were sorted by relevance. This meant that we for each search strategy we looked at 2000 records, e.g. the first 500 from 2000 to 2004, 2005 to 2009, 2010 to 2015, 2016-2020. In total we examined 5664 records for the four searches, but many of the articles we considered would have appeared in multiple searches. So the number of unique records examined will be lower. DMD and ALP both screened all records although we did this on slightly different days so the set of records might have varied slightly. In all cases as true double screening was not practical we included records where at least one reviewer had indicated inclusion.

The following limited searches were used in the advanced search function in Google Scholar:

Cash Transfer\* AND Mental Health and Adolesce\* (2060 FOR 2015 – 2020, 845 FOR 2010-2014, 193 FOR 2005-2009 – 62 FOR 2000-2004)

Cash Transfer\* AND Mental Health and Youth\* (3,100 FOR 2015- 2020, 1320 FOR 2010 – 2014, 355 FOR 2005-2009 – 131 FOR 2000-2004)

Cash Transfer\* AND Mental Health and Child\* 3,570 FOR 2015 – 2020, 1,520 FOR 2010 – 2014, 453 FOR 2005-2009 – 155 FOR 2000-2004)

Cash Transfer\* AND Mental Health and Teenage\* (2,190 FOR 2015 – 2020, 909 FOR 2010 – 2014, 233 FOR 2005-2009 – 82 FOR 2000-2004)

### EconPapers

We also conducted structured searches through the EconPapers database that catalogues journal articles and working papers. A number of different searches were run and 1,675 records were examined. The number of records screened with each search is listed below:

Cash Transfer(s) AND Mental in Freetext [47]

Social Assistance and Mental [32]

Social Assistance and RCT [6]

Social Policy AND Mental [88]

Mental Health and RCT [23]

Cash Transfer and Depression [19]

Social Polic\* and Mental Health [62]

“social welfare” AND “mental” [50]

“social protection” AND “mental” [20]

“poverty” AND mental [517]

Transfers AND mental [305]

Mone\* AND mental [390]

Cash AND mental [120]

### Details of data extraction

*Study eligibility:* Data required to assess eligibility according to inclusion criteria.

*Study details:* Study authors, publication date, objectives, country, number of participants, designs and methods.

*Intervention details:* Including group names and intervention arms, (as well as who received the intervention and control). Where available, we also extracted details on context and implementation. This included the design of the intervention, the cost of the intervention, the duration, its generosity (e.g. assessed by the percentage contribution of an average income from the intervention to the national average total income), population coverage and who received the money (e.g. men or women).

*Participant details:* Sex, age, ethnicity, follow up times.

*Outcomes:* Mental health (i.e. self-report measures or diagnosis of positive and negative mental health outcomes), who completed the measure (child, caregiver, clinician), length of follow up.

*Results:* Including overall results of intervention, and effect on mental health outcomes.

*Potential confounders:* These included key sociodemographic characteristics of participants, including education, poverty (measured using the outcomes included in the study, such as household education, income, employment, health, access to public utilities, material possessions and housing conditions or multidimensional poverty index), social status, immigration status, ethnicity, gender, gender identity, geographic residency, labour force participation, place of residency, sexual orientation, socioeconomic status, social status and religious affiliation.