

Evidence of the effectiveness of travel-related measures during the early phase of the COVID-19 pandemic: a rapid systematic review

Karen Ann Grépin ¹, Tsi-Lok Ho ², Zhihan Liu,¹ Summer Marion ³, Julianne Piper ⁴, Catherine Z Worsnop ³, Kelley Lee ⁴

To cite: Grépin KA, Ho T-L, Liu Z, *et al.* Evidence of the effectiveness of travel-related measures during the early phase of the COVID-19 pandemic: a rapid systematic review. *BMJ Global Health* 2021;**6**:e004537. doi:10.1136/bmjgh-2020-004537

Handling editor Seye Abimbola

► Additional material is published online only. To view, please visit the journal online (<http://dx.doi.org/10.1136/bmjgh-2020-004537>).

Received 25 November 2020
Revised 19 February 2021
Accepted 21 February 2021



© Author(s) (or their employer(s)) 2021. Re-use permitted under CC BY-NC. No commercial re-use. See rights and permissions. Published by BMJ.

¹School of Public Health, University of Hong Kong, Pokfulam, Hong Kong

²Li Ka Shing Faculty of Medicine, University of Hong Kong, Pokfulam, Hong Kong

³School of Public Policy, University of Maryland, College Park, Maryland, USA

⁴Faculty of Health Sciences, Simon Fraser University, Burnaby, British Columbia, Canada

Correspondence to
Dr Karen Ann Grépin;
kgregpin@hku.hk

ABSTRACT

Objective To review the effectiveness of travel measures implemented during the early stages of the COVID-19 pandemic to inform changes on how evidence is incorporated in the International Health Regulations (2005) (IHR).

Design We used an abbreviated Preferred Reporting Items for Systematic Review and Meta-Analysis Protocols to identify studies that investigated the effectiveness of travel-related measures preprinted or published by 1 June 2020.

Results We identified 29 studies, of which 26 were modelled. Thirteen studies investigated international measures, while 17 investigated domestic measures (one investigated both). There was a high level of agreement that the adoption of travel measures led to important changes in the dynamics of the early phases of the COVID-19 pandemic: the Wuhan measures reduced the number of cases exported internationally by 70%–80% and led to important reductions in transmission within Mainland China. Additional travel measures, including flight restrictions to and from China, may have led to additional reductions in the number of exported cases. Few studies investigated the effectiveness of measures implemented in other contexts. Early implementation was identified as a determinant of effectiveness. Most studies of international travel measures did not account for domestic travel measures thus likely leading to biased estimates.

Conclusion Travel measures played an important role in shaping the early transmission dynamics of the COVID-19 pandemic. There is an urgent need to address important evidence gaps and also a need to review how evidence is incorporated in the IHR in the early phases of a novel infectious disease outbreak.

INTRODUCTION

On 31 January 2020, the WHO declared the outbreak of SARS-CoV-2 a Public Health Emergency of International Concern (PHEIC). Based on information available at the time, and beyond recommending that China should enforce exit screening at its borders, the International Health Regulations

Key questions

What is already known?

- Previous reviews of the evidence from outbreaks of influenza and other infectious diseases have generally found that there is limited evidence of the effectiveness of travel measures in containing outbreaks.
- However, it is unclear if the lessons from other infectious disease outbreaks are relevant in the context of COVID-19.
- Based on evidence at the time, WHO did not recommend any travel restrictions when it declared COVID-19 a Public Health Emergency of International Concern (PHEIC).

What are the new findings?

- This study rapidly reviews the evidence on the effectiveness of travel measures implemented in the early phase of the pandemic on epidemiological outcomes.
- The study investigated both international and domestic travel measures, including a wide range of travel measures.
- The study finds that the domestic travel measures implemented in Wuhan were effective at reducing the importation of cases internationally and within China and that additional travel restrictions were also likely important. The study also finds that travel measures are more effective when implemented earlier in the outbreak.
- The findings generated implications for how evidence is integrated into the International Health Regulations and highlights important research gaps that remain.

What do the new findings imply?

- Findings highlight the need to evaluate the potential effectiveness of travel measures using a risk and context-based assessment of each specific outbreak and the types of measures used.
- The findings of this study also suggest the need to strengthen the PHEIC process in such a way to increase the likelihood that travel measures, when warranted, can be implemented rapidly enough to maximise their effectiveness.

2005 (IHR) Emergency Committee explicitly did not recommend the adoption of ‘any travel or trade restriction’.¹ While the IHR do not preclude State Parties from adopting health measures aimed at travellers, they do state that State Parties should follow WHO guidance and that they should avoid the adoption of measures that may lead to ‘unnecessary interference with international traffic’ and that such measures should not be ‘more restrictive of international traffic and not more invasive or intrusive to persons than reasonably available alternatives that would achieve the appropriate level of health protection’ (Article 43). Moreover, measures adopted should be based on ‘scientific principles’ and evidence.

As early as 31 December 2019, the same day that the Chinese Centre for Disease Control first notified WHO of a cluster of atypical pneumonia cases in Wuhan, some jurisdictions (including Taiwan, Russia and Macau) began to impose travel-related measures on travellers from Wuhan, mainly airport screening.² Within weeks, additional countries also restricted flights to and/or suspended entry from Wuhan, including Mongolia, Australia and North Korea. On 23 January, a *cordon sanitaire* was drawn around Wuhan, effectively suspending all international and domestic travel in and out of the city.³ A day later, the measures were extended to all of Hubei province. By March 2020, despite WHO’s initial recommendations, virtually all IHR (2005) State Parties had implemented some form of cross-border travel-related measure during the initial phase of the COVID-19 pandemic.⁴ This is, by far, the largest number of countries adopting such measures during a PHEIC: only about a quarter of countries had imposed such measures during the 2009 H1N1 pandemic and the 2014 Ebola outbreak in West Africa.^{5–7} It is estimated that there was a 65% drop in international travel in the first half of 2020 as a result of the COVID-19 pandemic.⁸

The nearly universal adoption of travel-related measures, especially in light of the potentially large economic and social consequences, raises questions as to whether such measures can be, and have been, effective at reducing international transmission of the virus during the pandemic. Studies from previous infectious disease outbreaks have suggested that certain travel-related measures have only limited, or at best modest, effectiveness in containing outbreaks of influenza. For example, a systematic review of the effectiveness of international travel measures (screening, travel restrictions and border closures) to control pandemic influenza identified 15 studies and found that measures implemented early could delay local transmission by a few days or weeks, slow international spread and delay the epidemic peak in isolated locations by reducing the number of seeding events.⁹ The review did not identify any evidence that screening methods were effective but it did find that border closures had been effective in preventing virus introduction to small island states during the 1918 influenza pandemic. However, the authors also concluded

that the overall evidence base on which they drew their conclusions was small and of low quality.

A related but larger review of a broader range of measures, including travel advice, screening, internal travel restrictions and border closures, for both epidemic and pandemic influenza, also found that travel restrictions could delay the arrival and spread of epidemics and that select isolated locations may benefit more from border closures. However, once again, the overall effect sizes were relatively small, and the quality of evidence was also found to be very low.¹⁰ Another review of both international and domestic travel restrictions concluded that such measures could delay, but not contain, dissemination of both pandemic and seasonal influenza after it emerged.¹¹ Based on the 23 studies identified, the review concluded that internal and international border restrictions could delay the spread of an outbreak by 1 week and 2 months, respectively, and that such restrictions could delay the spread and peak of epidemics from between a few days to up to 4 months. However, the timing of the introduction of such measures was key; the extent of the delay of spread was greatly reduced when restrictions were imposed more than 6 weeks after the onset of an epidemic.

Beyond influenza, evidence from other infectious disease outbreaks is more limited. A modelling study of travel restrictions implemented during the West African Ebola outbreak estimated that such measures may have delayed further international transmission by a few weeks for some countries.¹² Given the low proportion of all international travellers originating in Ebola-affected countries at that time, another study suggested that exit screening measures in affected countries were likely to be more effective at reducing onward international transmission than travel restrictions,¹³ a finding that was supported by a similar study.¹⁴ The travel advisories issued by WHO during the 2003 SARS outbreak, which led to substantial declines in international travel to Hong Kong and Mainland China, were estimated to have delayed the export of cases by only a few days.¹⁵ Importantly, other studies have suggested that travel measures during outbreaks can be counter-productive by preventing countries from launching effective epidemic responses,¹⁶ undermining the detection of cases and causing widespread economic effects on the travel industry itself.¹⁷

However, since the onset of this pandemic, it has become clear that the clinical features of COVID-19 make it more challenging than previous infectious diseases to detect and contain,¹⁸ raising questions about whether evidence of effectiveness from previous studies is relevant for COVID-19.¹⁹ The goal of this paper is to review evidence of the effectiveness of travel-related measures implemented during the early stages of the COVID-19 pandemic, a time of many unknowns regarding the clinical and epidemiological features of the COVID-19. Since the emergence of COVID-19, dozens of studies have now been published or made available that evaluate the effectiveness of travel-related measures in the context of the

pandemic. The only other effort we know of to review the evidence of travel measures is a very recently released Cochrane review of the literature on the effectiveness of international travel-related measures to contain COVID-19, severe acute respiratory syndrome (SARS) and Middle East Respiratory Syndrome (MERS).²⁰ This review certainly adds to our understanding of the evidence base of travel measures; however, it did not investigate the effect of domestic travel measures, including those imposed in Wuhan, potentially overlooking a valuable piece of evidence on the effectiveness of travel measures. That review identified 36 studies, of which 25 were specific to COVID-19 and concluded that cross-border travel measures may limit the spread of disease across national borders, specifically in terms of reducing the number of imported cases and delaying or reducing epidemic development, although it found that the certainty of the reviewed evidence was low to very low. Given the widespread adoption of travel restrictions, and the likely enormous economic and social consequences resulting from them, a fuller understanding of the effectiveness of all of the measures adopted during the early phase of the pandemic is warranted. While the question of whether the adoption of these measures is compliant with the IHR has received attention in the literature,^{21 22} it is beyond the scope of this paper.

METHODS

To conduct this review, we adopted an abbreviated version of the Preferred Reporting Items for Systematic Review and Meta-Analysis (PRISMA) Protocol using the 17-point checklist.²³ The rationale for the study was the widespread adoption of travel measures despite consensus view at the time that such measures were largely ineffective and to strengthen the application of the IHR during this and future pandemics. The objectives were to rapidly review evidence of the effectiveness of the full range of travel measures adopted during the early stage of the COVID-19 pandemic, from both published and unpublished studies. We further elaborate on other methods of the study below.

Search strategy

Our search strategy was designed to be as inclusive as possible of all studies (as of 1 June 2020) that provide new evidence of the effectiveness of any travel-related measure adopted during the early phase of the COVID-19 pandemic. According to the IHR, travel-related measures include travel advice, entry and exit screening of travellers, medical examination or vaccination requirements for travellers, isolation or quarantine of suspected or affected persons, the refusal of entry of travellers and restrictions on travellers from affected areas.¹ While only those measures that are applied by State Parties at the level of an international border are covered by the IHR, many of these measures have also been applied to domestic travellers (eg, at the level of interprovincial or

interstate borders). Private companies, such as airlines and cruise ships, have also implemented travel measures which, while also not subject to the IHR, further restricted travel during this pandemic. We did not restrict the search to specific outcomes (eg, epidemiological or otherwise), or any specific methodological approach, or any specific geography. We only identified one study that looked at non-epidemiological outcomes,²⁴ so while we include it in our description of the search and screening strategies, we exclude it from our main analysis below.

Given the rapidly evolving nature of the outbreak, as well as the rapidly expanding published literature on COVID-19, our search strategy targeted both preprint and published articles, with the strategies to identify each differing slightly. Keywords were identified based on both inductive iterative testing of potential keywords, as well as deductively through papers identified through other channels. Search terms were then refined to minimise overlap and to maximise the number of studies that could be identified. While we did not impose a language restriction, we did not specifically search in non-English sources.

For preprint papers, we searched the BioRxiv and MedRxiv servers, which offer limited search functionality, using the following keywords in the title field: travel*, flight*, airline*, border*, airport*, passenger or air traffic. We restricted the sample to papers that also included at least one COVID-19 keyword, either related to the virus itself (eg, coronavirus, corona virus, coronavirinae, coronaviridae, betacoronavirus, COVID-19, COVID-19 19, COVID-19, nCoV, CoV 2, CoV2, sarscov2, 2019nCoV, novel CoV, OR Wuhan virus), the location of the early outbreak (eg, Wuhan, Hubei or Hunan) or less specific but widely used terms (severe acute respiratory OR pneumonia AND outbreak). We used the same travel-related keywords to search the WHO's COVID-19 global research database but did not impose a COVID-19 search term as theoretically all articles in this database were on this topic.²⁵

For published papers, we searched PubMed with the following search strategy: studies must include at least one COVID-19 keyword mentioned above or one of the location-specific terms mentioned above combined with either ("severe acute respiratory" OR pneumonia AND outbreak) or one of the following MESH terms (Coronavirus, Coronavirus Infections, or Betacoronavirus) or the supplementary concept (COVID-19 or severe acute respiratory syndrome coronavirus 2). All studies must also include at least one travel-related measure term in the title or abstract (eg, screening, travel advice, travel advisory, cordon sanitaire, ban, restrict*, prohib* or clos*) as well as one travel-related term in the title or abstract (travel*, cruis*, ship*, terrest*, airplane, flight, plane, migrant, passenger, return, outflow, outbound, inbound, inflow, traffic, arrival, train, trains, bus, buses, transit, port*, airport*, tourist*, international importation, international exportation, case importation, imported cases, exported cases or border).

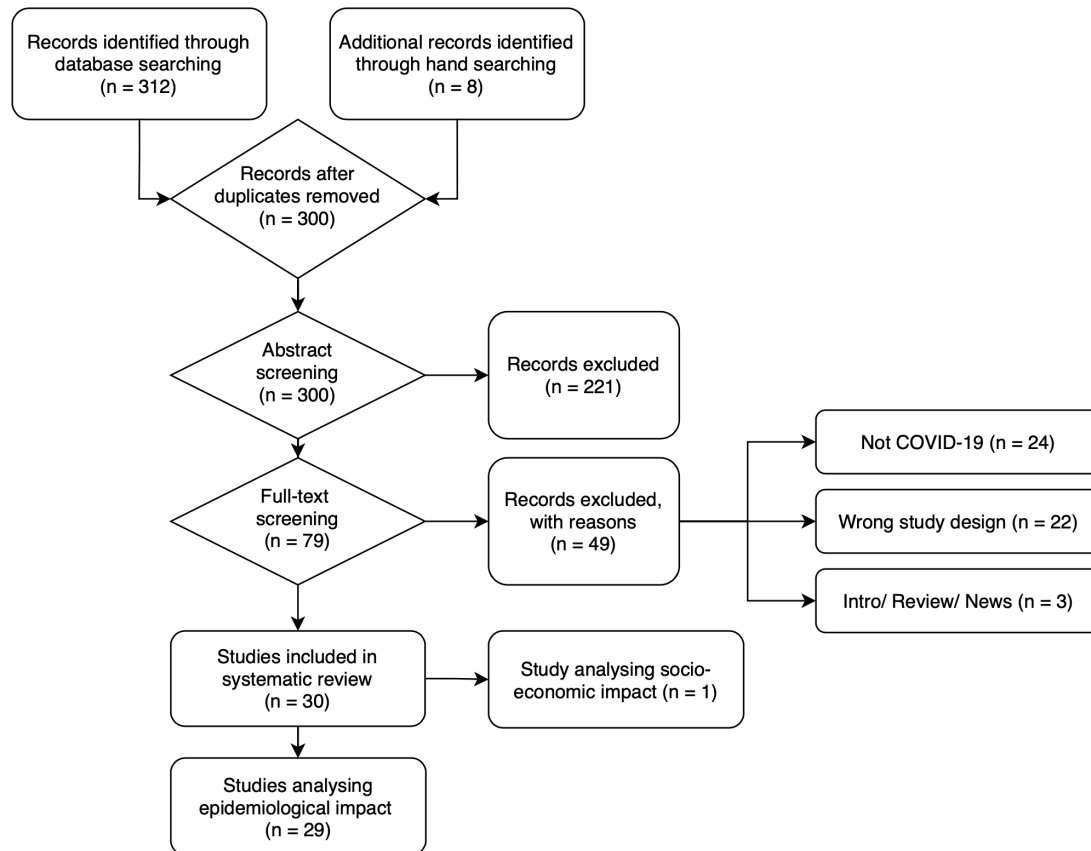


Figure 1 PRISMA diagram. PRISMA, Preferred Reporting Items for Systematic Reviews and Meta-Analyses.

Screening strategy

As of 1 June 2020, we identified a total of 312 articles, and during the review process, we identified another eight articles through other sources (see figure 1). From all identified studies (n=320), we removed duplicates, which left 300 articles to be screened. We uploaded the abstracts into Covidence (<https://www.covidence.org/>), software developed for systematic reviews, to perform a title and abstract screen. Our inclusion criteria were that studies must investigate the COVID-19 pandemic and at least one travel-related measure (applied either at an international or domestic border), must be empirical (ie, modelled or observational) and must evaluate a specific outcome (epidemiological or other). Measures could have been undertaken by either a public (ie, a government) or a private actor (eg, an airline). We excluded articles that were news reports, review articles, commentaries or editorials, or conjecture (ie, did not provide new data or evidence) about the effectiveness of travel measures. Each article was screened by two independent reviewers (TLH and ZL). Where there was disagreement among the reviewers, a third reviewer (KG) resolved any disagreement.

After screening, we were left with 79 articles. The full texts of each were obtained and again uploaded into Covidence. Two reviewers again screened each article to determine if the article still met the inclusion criteria. Any disagreements among the two reviewers were again reviewed by a third reviewer (KG) who was not otherwise

involved in the screening process. After the full-text screening, we were left with 30 studies that met all of our selection criteria. Of these, one study investigated socio-economic outcomes, which we exclude from this analysis given the lack of overlap in outcomes.

Updating strategy

We continued to search the relevant databases for any newly published papers or to identify papers that had originally been identified as preprints but were subsequently published until 1 June 2020. We retained the subsequently published versions of such papers.

Data extraction

For the remaining 29 studies, we extracted the title, authors, article source, publication date, whether it was a preprint or published (or had previously been a preprint) article, country context in which the study was conducted (or global), country(ies) implementing the measure, the country(ies) affected by the travel measure, specific measure(s) adopted, the timing of the measures, the duration of the measures, whether the study was modelled or based on observational data, the type of model used, epidemiological assumptions made in the models, the specific outcomes observed, the overall findings, the way in which cases/deaths were recorded, whether there was any description of diagnostic methods used to identify cases/deaths, whether the study made assumptions about asymptomatic cases, whether the study

Table 1 Summary statistics

	Preprint	Published	Total
Date pre-printed or published			
January	0	1	1
February	0	4	4
March	4	11	15
April	0	3	3
May	1	5	6
Study design			
Modelled	5	21	26
Observational	0	3	3
Level of region affected by travel measures			
Mainland China	3	14	17
Other single country	1	4	5
Multicountries or global	1	6	7
Level of travel measures imposed			
International	2	10	12
Interprovincial	3	13	16
Both*	0	1	1
Travel measures analysed†			
Suspended transportation	4	20	24
Border restrictions	3	18	21
Screening	0	5	5
Entry quarantine	1	3	4

*Papers evaluating the impact of both international and interprovincial measures.

†Papers may analyse effects of multiple restrictions.

also accounted for secondary transmission, the extent to which the model accounted for other measures imposed around the same time, the data sources used in the study and the stated limitations of each study. For modelled studies, we also collected the name of the model used if an existing model was used, whether the model used was a dynamic or static model, whether the model used was a stochastic or deterministic model and whether it was an individual versus population-based model. A full list of the papers, with additional details on each, is presented in online supplemental appendix table 2.

Analysis of travel measures

We characterised the investigated travel-related measures into four groups: suspended transportation, border restrictions, entry or exit screening and entry quarantine, which are summarised in table 1. Papers may have investigated more than one measure and thus may contribute more than once to the table. In our analysis, we grouped studies according to whether the measure affected international (table 2) or domestic travellers (table 3). One study fit both criteria and thus is listed twice in the analysis. We used a narrative approach to synthesise the evidence of effectiveness. Two studies,^{26 27} despite study

design and stated objectives to investigate the impact of travel-related measures, did not present their findings in such a way that allowed us to extract the evidence generated in the study. These are summarised in online supplemental appendix table 2 but not in tables 2 and 3.

Analysis of outcome measures

Outcomes included the number of observed cases, date of the epidemic peak, risk of transmission, case growth rate, doubling time, time of arrival in a new country, the reproductive number (R_0 or R_t) and projected cumulative cases. Details are listed in tables 2 and 3, which summarise papers that investigate international and domestic travel measures, respectively. One article that evaluated the effectiveness of both types of measures²⁸ appears in both tables.

Assessment of bias

Individual articles were assessed for bias using a proprietary scoring system consisting of three tiers: low, moderate and high risk of bias. Low scores were given when the author had adequately addressed the domain, moderate when it had been either partially or incompletely addressed or high when it was not or only poorly addressed. Articles were assessed with regards to their ability to form a clear and precise definition of the research question, travel restriction measures included in the analysis, comprehensiveness of outcome, suitable mathematical modelling, model assumptions described, confounding factors, model validation and uncertainty assessment.²⁹ A detailed summary of our bias assessment is presented in online supplemental appendix table 1.

RESULTS

Of the 29 identified studies in this rapid review, 24 had been published by 1 September 2020, while the rest were preprint studies (see table 1). Almost all of the studies (26) were modelled studies with few observational studies (3). Given the timing of the studies, almost all of the studies focused on the initial exportation of cases from Wuhan either domestically within China or internationally. Among the travel-related measures adopted, the most commonly investigated were suspended transportation (24), border restrictions (21) and screening (5). Only four studies investigated entry quarantine.

Effectiveness of travel-related measures on the international spread of COVID-19

In table 2, we present the summary of evidence generated from the papers that investigated the impact of international travel measures. All but one³⁰ were modelled studies. Four studies directly investigated the impact of the Wuhan travel ban on the initial export of cases internationally.^{28 31–33} Comparing the observed number of exported cases to scenario-based modelled estimates without the ban, studies consistently found that these measures were highly effective at reducing exportation of cases. Among the studies that investigated the impact

Table 2 Effect of international travel measures

Study	Setting	Study design	Model types	Epidemiological assumptions	Travel measure(s)	Outcomes investigated	Scenarios of intervention	Estimated effect(s)
Suspended transportation								
Anzai <i>et al</i> ³¹	Global	Modelled	Poisson regression model.	Mean incubation period of 5 days.	Wuhan travel restrictions.	Number of exported cases.	Travel restrictions effective 23 January.	From 28 January to 6 February, 226 cases (95% CI 86 to 449) were prevented from being exported globally (70% reduction).
	Japan	Modelled	Negative binomial model; hazard function.	R0: 1.5, 2.2 and 3.7; contract tracing: 10%, 30% or 50% of contacts isolated.	Wuhan travel restrictions.	Probability of a major outbreak.	Presence of travel restriction and with 10%/30%/50% of contacts traced and isolated.	R0 (2.2): absolute risk reduction was 7%, 12% and 20% for contract tracing levels 10%, 30% and 50%, respectively. Largest effect when R0 (1.5) and 50% of contracts traced led to 37% absolute risk reduction. Median time delay was less than 1 day when R0=2.2-3.7, and 1-2 days when R0 is 1.5.
Chinazzi <i>et al</i> ²⁸	Global	Modelled	Individual-based, stochastic global epidemic and mobility model.	Epidemic start date 15 November-1 December 2019; R0: 2.57 (90% CI 2.37 to 2.78); Tg: 7.5 days; Td: 4.2 days; global detection of cases can be as low as 40%. Td: 4.2 (90% CI 3.8 to 4.7).	Wuhan travel restrictions.	Relative risk of case importation.	Travel restrictions effective 23 January.	A 77% reduction in cases imported from China to other countries in early February. Prior to 23 January, 86% of international cases originated in Wuhan, afterwards most cases came from other Chinese cities.
					International travel restrictions: 59 airlines suspended or limited flights to Mainland China and several countries (USA, Russia, Australia and Italy) imposed travel restrictions.	Number of internationally imported and detected cases.	40%-90% overall traffic reduction to and from mainland China; transmissibility reduction in China 0%, respectively).	The number of imported cases is initially reduced by 10x but returns to 170-35 detected cases a day by 1 March (40%-90% traffic reductions, respectively).
						Number of internationally imported and detected cases.	40%-90% overall traffic reduction to and from mainland China; transmissibility reduction in China 25%.	The number of imported cases is initially reduced by 10x but returns to 26-5 detected cases a day by 1 March (40%-90% traffic reductions, respectively).
						Number of internationally imported and detected cases.	40%-90% overall traffic reduction to and from mainland China; transmissibility reduction in China 50%.	The number of imported cases is initially dramatically reduced, epidemic growth in China delayed and number of internationally imported cases remains in single digits by 1 March.

Continued

Table 2 Continued

Study	Setting	Study design	Model types	Epidemiological assumptions	Travel measure(s)	Outcomes investigated	Scenarios of intervention	Estimated effect(s)
Adiga <i>et al</i> ⁶⁴	Global	Modelled	Linear regression models.	NS	Suspension of flight routes by airlines (voluntary or mandated by travel bans).	Arrival time of first case.	Actual airline suspensions, based on IATA data.	An increase in estimated arrival time of approximately 4–5 days. Ethiopia and Qatar observe an increase >10 days.
Wells <i>et al</i> ⁶²	Global	Modelled	Maximum likelihood approach.	NS	Wuhan and Hubei travel restrictions.	Exportation risk and exported cases.	Travel restrictions were implemented in Wuhan on 23 January and Hubei on 24 January.	Reduced exportation risk by 81.3% (95% CI 80.5% to 82.1%) and averted 70.5% (95% CI 68.8% to 72.0%) of exported cases by 15 February 2020.
Kucharski <i>et al</i> ⁶³	Global	Modelled	Stochastic transmission dynamic model.	100% of cases become symptomatic.	Wuhan travel restrictions.	Transmission dynamics outside of Wuhan.	Travel restrictions effective 23 January.	The transmission reduced by about half in the 2 weeks following introduction but does not directly test effectiveness of such measures.
Costantino <i>et al</i> ⁶⁶	Australia	Modelled	Poisson regression model; age-specific deterministic model.	R0: 2.2; infectious period: 12.2 days; effectiveness of home quarantine: 50%; home quarantine: 14 days; excludes <i>Diamond Princess Cruise Ship</i> effects.	Australia's ban on flights from China coupled with home quarantine of entering travellers.	Imported cases to Australia from China.	Complete travel ban from 2 February to 8 March, then full lifting of ban.	32, 43 and 36 infected cases every 2 weeks would be averted from 26 January onwards.
								Similar to above.
						Total cases and deaths in Australia.	Complete travel ban from 2 February to 8 March, then full lifting of ban.	An estimate 87% reduction in cases and deaths.
								Similar to above.
Adekunle <i>et al</i> ⁶⁵	Australia	Modelled	Stochastic metapopulation model.	China R0: 2.63 (1 December 2019–31 January 2020) and 1.73 (afterwards).	Australia's travel ban on flights from China.	Imported cases and onset of widespread transmission in Australia.	Travel bans begin on 24 January.	By 2 March, 79% reduction in expected cases and delayed onset of widespread transmission by 4 weeks.
					Australia's travel ban on flights from Iran, South Korea and Iran.	Imported cases.	Travel bans begin on 2 March.	Negligible impact on imported cases or local transmission.

Continued

Table 2 Continued

Study	Setting	Study design	Model types	Epidemiological assumptions	Travel measure(s)	Outcomes investigated	Scenarios of intervention	Estimated effect(s)
Linka <i>et al</i> ³⁷	European Union	Modelled	Mathematical deterministic SEIR model.	R0: 4.62±1.32 (mean, across all states) or a range from 2.7 (Denmark) - 8.7 (Austria); latent period 2.56; infectious periods 17.82.	Travel restrictions introduced in the European Union (external and some internal).	Number of exposed, infectious and recovered patients by country.	Restrictions were implemented on 17 March.	Travel restriction slowed faster spread of the virus, especially in Central Europe, Spain and France.
Screening								
Clifford <i>et al</i> ³⁸	Theoretical	Modelled	Non-homogeneous Poisson process with intensity function; mathematical model.	R0: 1.4-3.9; others listed in table 1.	Syndromic exit/entry screening plus traveller sensitisation to self-isolate if they develop symptoms.	Delay in the outbreak.	Screening in the context of 1 or 10 or 100 infected travellers per week.	With one infected traveller per week, the outbreak is delayed by 4 days (10 travellers/1 day).
							Screening plus sensitisation in the context of 1 or 10 or 100 infected travellers per week.	With one infected traveller per week, the outbreak is delayed by 8 days (10 travellers/2 days).
Mandal <i>et al</i> ³⁹	India	Modelled	Mathematical model.	R0: 2, 4.	Port-of-entry based screening on travellers from China to India.	Time to reach 1000 cases in India.	Screening of both symptomatic and asymptomatic cases is feasible.	Additional detection of 90% asymptomatic individuals was required to delay the epidemic by 20 days, but unclear if this is even feasible.
Wells <i>et al</i> ³²	Worldwide	Modelled	Maximum likelihood approach, Monte Carlo simulations.	NS	Self-identification on arrival of symptomatic travellers.	Probability of identification.	With only symptomatic cases were detected.	Could potentially identify up to 95% of infected travellers, assuming effectiveness of the questionnaire.
Broad measures including travel restrictions								
Cowling <i>et al</i> ³⁰	Hong Kong SAR	Observational	Time series study.	NS	Border restrictions in combination with quarantine and isolation as well as social distancing and school closures.	Effective reproductive number.	January through end of March in Hong Kong.	Demonstrates that together the measures were effective at reducing the effective reproductive number but were not able to isolate impact of border restrictions.

IATA, International Air Transport Association; NS, not specified; SEIR, Susceptible, Exposed, Infectious, Recovered; Td, doubling time; Tg, generation time.

Table 3 Effect of implementation of interprovincial travel measures

Study	Study design	Model type	Epidemiological assumptions	Travel measure(s)	Outcomes investigated	Scenarios of intervention	Estimated effect(s)
Aleta <i>et al</i> ⁴⁵	Modelled	Stochastic SEIR-metapopulation model.	Generation time: 7.5 days; R0: 2.4; later period: 3 days.	Wuhan travel measures.	Cases in Mainland China outside of Wuhan.	Travel measures implemented on 23 January.	A reduced number of cases but only in the short term.
Chinazzi <i>et al</i> ²⁸	Modelled	Individual-based, stochastic global epidemic and mobility model.	R0: 2.57; doubling time: 4.2; no changes in transmissibility within China.	Wuhan travel measures.	Cases in Mainland China outside of Wuhan.	Travel measures implemented on 23 January.	Reduction of cases was approximately 10% by 31 January (range 1–58%).
Fang <i>et al</i> ⁴⁰	Modelled	Dynamic distributed lag regression model.	Incubation period: up to 22 days.	Wuhan travel measures.	Number of cases in cities outside of Hubei from 23 January to 29 February.	Travel measures implemented on 23 January.	Wuhan travel ban delayed epidemic progression by 3–5 days in China. COVID-19 cases would be 64.81% higher in 347 cities outside Hubei (20810vs 12 626), and 52.64% higher in 16 other cities in Hubei as of 29 February (23400vs 15 330).
Shi and Fang <i>et al</i> ⁴¹	Modelled	Autoregressive integrated moving average model.	Incubation period: 4–6 days.	Wuhan travel measures.	Cumulative number of confirmed cases outside Wuhan by 29 February.	Travel measures implemented on 23 January.	Travel ban may have prevented approximately 19768 (95% CI 13 589 to 25 946) cases outside of Wuhan by 29 February (39% reduction).
Tian <i>et al</i> ⁴²	Modelled	Deterministic SEIR model.	R0: 3.15.	Wuhan travel measures.	Arrival times in cities across Mainland China by 19 February.	Travel measures implemented on 23 January.	Delayed arrival time by 2.91 days (95% CI: 2.54, 3.29).
Kraemer <i>et al</i> ⁴⁴	Modelled	Generalised linear model.	Doubling time: 4.0 days (outside Hubei), 7.2 days (inside Hubei); incubation period 5.1 days.	Wuhan travel measures.	Cases in Mainland China outside of Wuhan by 19 February.	Travel measures implemented on 23 January.	National number of cases decreased from 744 000 (\pm 156 000) to 202 000 (\pm 10 000) (72.8% decrease).
Tang <i>et al</i> ⁴³	Modelled	Deterministic SEIR model.	R0: 6.47.	Wuhan travel measures.	Cases in select locations outside of Wuhan.	Travel measures implemented on 23 January.	Travel measures reduced growth rates outside, which became negative after 23 January; provinces with greater mobility from Wuhan displayed more rapidly declining growth rates.
Hou <i>et al</i> ⁴⁷	Modelled	Deterministic SEIR model.	Incubation period: 7 days.	Wuhan travel measures.	Effective reproductive rate.	Travel measures implemented on 23 January.	Travel restriction reduced the number of infected individuals in Beijing over 7 days by 91.14%. Travel measures significantly changed transmission dynamics within China.
Li <i>et al</i> ⁴⁸	Modelled	Stochastic SEIR model.	R0 at the beginning of the epidemic to be 2.38.	Wuhan travel measures.	Reproductive number.	Travel measures implemented on 23 January.	Travel measure reduced the reproductive number from 2.38 down to 1.34 and 0.98, in the 1-week and 2-week period immediately following their introduction.

Continued

Table 3 Continued

Study	Study design	Model type	Epidemiological assumptions	Travel measure(s)	Outcomes investigated	Scenarios of intervention	Estimated effect(s)
Lau <i>et al</i> ⁴⁹	Observational	Retrospective regression model.	R0: 2.2–3.9; mean incubation period: 5.1 days.	Wuhan travel measures.	Doubling time.	Travel measures implemented on 23 January.	Significant increase in doubling time from 2 to 4 days after lockdown.
Wu <i>et al</i> ⁵³	Modelled	Deterministic SEIR model.	R0=2.6, zoonotic force=86/day until 1 January market closure.	Wuhan travel measures.	Exported cases in the rest of Mainland China.	Travel restrictions led to either a 0% or 50% reduction in travel outside of Wuhan.	Even a 50% reduction in intercity mobility would have a negligible effect on the epidemic dynamics.
Liu <i>et al</i> ⁵²	Observational	Linear regression.	Incubation period: 3–7 days.	Wuhan travel measures.	Cases exported outside of Wuhan.	Travel measures implemented on 23 January.	A mean value of 129 cases exported per 10 000 people who left Wuhan.
						Travel measures implemented 2 days earlier.	An estimated 1420 (95% CI 1059 to 1833) cases would have been prevented.
						Travel measures implemented 2 days later.	An estimated 1462 (95% CI 1059 to 1833) additional cases would have happened.
Yuan <i>et al</i> ⁴⁶	Modelled	Regression model.	Incubation period: 5 days.	Wuhan travel measures in combination with a stay-at-home movement.	Cases in 44 regions outside of Wuhan by 27 February.	Travel measures implemented on 23 January.	Reduced the number of cases outside of Wuhan from 41 477 to 30 765.
					Cases in 44 regions outside of Wuhan by 27 February.	Travel measures implemented 3 days earlier.	Further reduce the number of cases to between 15 768 and 21 245.
Su <i>et al</i> ⁵⁴	Modelled	Deterministic SEIR model.	R0=2.91, 2.78, 2.02 and 1.75 for Beijing, Shanghai, Guangzhou and Shenzhen, respectively.	Wuhan travel measures in combination with other non-pharmaceutical interventions.	Transmission rates in four metropolitan areas of China.	Different contract rates were assumed to result from reduced population flow.	Travel restrictions contributed to a reduction in the contact rate and reduced the time to peak and the number of cases.
Jiang <i>et al</i> ⁵⁰	Modelled	Time-varying sparse vector autoregressive model.	Incubation period: 10 days.	Travel measures introduced in five cities of Hubei (Wuhan, Huanggang, Ezhou, Chibi and Zhijiang).	Daily transmission routes from Hubei to other provinces through 19 February.	Travel measures started to be implemented on 23 January.	Travel restrictions reduced transmission between provinces.

Continued

Table 3 Continued

Study	Study design	Model type	Epidemiological assumptions	Travel measure(s)	Outcomes investigated	Scenarios of intervention	Estimated effect(s)
Lai <i>et al</i> ⁵¹	Modelled	Stochastic SEIR model.	R0: 2.2; incubation period: 5.2 days.	Wuhan travel measures in combination with other non-pharmaceutical interventions.	Cases in Mainland China outside of Wuhan.	Travel measures implemented on 23 January.	Early detection and isolation of cases more effective than travel restrictions; travel restricts reduced the number of cases outside of Wuhan as well as its geographic spread.
					Cases in Mainland China outside of Wuhan.	If travel restrictions of same magnitude were implemented 1, 2 or 3 weeks earlier.	If interventions were conducted 1, 2 or 3 weeks earlier, cases will reduce by 66%, 86% or 95%, respectively.
					Total number of cases outside of Wuhan.	If travel restrictions of same magnitude were implemented 1, 2 or 3 weeks later.	If interventions were conducted 1, 2 or 3 weeks later, cases may increase 3-fold, 7-fold or 18-fold, respectively.
Hossain <i>et al</i> ⁴⁸	Modelled	Meta-population model.	R0: 2.92; latent period: 5.2 days; generation time: 8.4 days.	Border control and quarantine.	Arrival time outside of Wuhan.	Theoretical application of measures.	Arrival time is delayed by 32.5 days and 44 days under a low R0 (1.4) but under higher R0 (2.92) only 10 extra days can be gained.

of the Wuhan travel measures, there was a consensus that the measures led to a 70%–77% reduction in the number of cases exported internationally through early to mid-February: Anzai *et al*³¹ estimated a 70% reduction in exported cases globally in the week following the introduction of the ban, Chinazzi *et al*²⁸ estimated that the ban led to a 77% reduction in imported cases while Wells *et al*³² estimated that it reduced the number exported cases by 70.5% through mid-February. Kucharski, however, estimated that transmission rates outside of China were reduced by about half in the 2 weeks following the introduction of the ban.³³

Beyond the direct effect of the Wuhan travel ban, Chinazzi *et al*²⁸ estimated that the application of additional travel-related restrictions, in this case, the reduction in flights between Mainland China and receiving countries, led to substantial additional reductions in imported cases globally, though the extent of reduction varied by country and the extent of the flight reductions. Namely, reductions in international traffic of 40%–90% between China and other countries could have led to large additional decreases in imported cases and important delays in the arrival of a substantial number of cases in other countries through the beginning of March. Adiga *et al*³⁴ investigated the impact of government or airline-imposed travel-related measures against China and estimated that these led to a delay in the importation of the virus by about 4–5 days on average and up to 10 days in select countries. This study, however, did not directly control for the impact of the Wuhan lockdown, which happened around the same time as many of the measures investigated.

In terms of specific country case studies, Adekunle *et al*³⁵ found that Australia’s ban on air travel to and from China may have prevented 82% of imported cases through 2 February. Anzai *et al*³¹ which focused on the impact of the ban on the outbreak in Japan, estimated that the absolute risk of a major outbreak was only modestly delayed due to the Wuhan travel ban and that the median time delay in a major outbreak was only 1–2 days. Similarly, Costantino *et al*³⁶ estimated that it may have led to a 79% reduction in imported cases through 2 March. Linka *et al*³⁷ estimated that the travel restrictions implemented both at the external and internal borders of the European Union significantly decreased the speed of virus spread across member states, especially in Central European countries. These last two studies, both of which focused on an earlier period in the pandemic, failed to account for the impact of the Wuhan lockdown in addition to the restrictions evaluated.

Studies that investigated the effectiveness of screening found that only very highly effective screening could reduce (or decrease) the risk of importation or exportation. Clifford *et al*³⁸ found that when the number of cases was low in the exporting country, screening may delay the onset of the epidemic in the importing country by up to a week, while Mandal *et al*³⁹ found that if screening could detect 90% of asymptomatic individuals, it could

delay the average time of the epidemic by up to 20 days in select countries. Assuming that self-identification of cases was effective, another study suggested that such measures could identify a large proportion of infected travellers. However, this assumes that screening is effective but does not study this directly.³²

A single observational study identified in this review investigated the impact of border restrictions, in combination with mandatory quarantine and screening, for incoming travellers to Hong Kong. Cowling *et al*³⁰ concluded that the application of quarantine measures of incoming travellers into the region was an important element of their successful public health response, but the study does not specifically estimate its impact independent of other measures including travel-related measures.

Effectiveness of travel-related measures on the domestic spread of COVID-19 within China

In table 3, we present the findings from the studies that investigated the impact of the Wuhan travel restrictions, on the domestic export of cases to other parts of China. By comparing actual observed cases to counterfactual scenarios where such measures had not been imposed, Chinazzi *et al*²⁸ predicted that the travel ban led to a 10% reduction of exported cases within the first 7 days, Fang *et al*⁴⁰ estimated a 39.3% reduction over 1 month Shi, Fang⁴¹ similarly identified a 39% reduction in cases over 1 month, while Tian *et al*⁴² estimated a 73% reduction through mid-February. Tang *et al*⁴³ found that the Wuhan travel ban led to a 91.1% reduction in imported cases in Beijing for over 7 days. Similarly, Kraemer *et al*⁴⁴ also found that these travel measures dramatically reduced the transmission of the outbreak across the country, with areas that had greater prelockdown connectivity with Wuhan experiencing a greater decline. Aleta *et al*⁴⁵ estimated that the measures were effective in reducing the exportation of cases but only in the short term. Yuan also found the lockdown to be effective at reducing the number of cases outside of Wuhan but notes that the timing also coincided with a nationwide stay-at-home campaign imposed by the central Chinese government.⁴⁶

Studies also investigated the impact of the travel ban on the domestic timing of the outbreak. Tian *et al*⁴² estimated the ban delayed outbreaks within China by 2.91 days, while Chinazzi *et al*²⁸ estimated a delay of 3–5 days. Studies also investigated the impact of the travel ban on the effective reproductive rate, the doubling time and other measures. Hou *et al*⁴⁷ found that the ban quickly reduced the reproductive rate of the virus outside of Wuhan,; similarly, Li *et al*⁴⁸ found that the reproductive number dropped by more than half within 2 weeks of the introduction of the ban. Using observational data, Lau *et al*⁴⁹ found that the doubling time of the virus increased from 2 days to 4 days after the travel ban was imposed. Another study found substantial declines in transmission routes between Chinese provinces within weeks of the introduction of the Hubei travel bans.⁵⁰

The timing of travel-related measures, again, appears to be important in predicting effectiveness. Both Lai *et al* and Liu *et al*, the former a modelled study and the latter an observational study, estimated that the Wuhan travel ban would have been substantially more effective if implemented 1–3 weeks earlier.^{51 52} This is supported by Wu *et al*,⁵³ who found that the travel ban had a relatively minor effect on the overall speed of transmission of the outbreak in areas of China outside of Wuhan, largely because a large number of cases had already been exported before the travel ban, limiting its effectiveness.

Finally, a few studies evaluated domestic travel bans in combination with other travel-related measures. For example, one modelled study estimated that if major cities within China had imposed additional measures, they could have further reduced their epidemic risk.⁵⁴

Quality of available evidence

Our review of the risk of bias in the included studies (online supplemental appendix table 1) suggests that, apart from a few exceptions, while most of the studies had clear research questions, descriptions of the travel-related measure(s) evaluated, and discussions of the outcomes, few of the studies made efforts to adequately control for the presence of other public health or other travel-related measures implemented at the same time, or for other contextual factors that could influence the impact of travel-related measures. One important challenge common to all of the studies was the quality of data on detected cases early on in the pandemic and only a small number of the studies allowed for their estimates to vary based on potential ranges of the number of true cases that were actually detected early in the outbreak (eg, Chinazzi *et al*²⁸ estimated 24.4% of all cases were undetected, Fang *et al*⁴⁰ estimated 42%–80% were undetected, Kucharski *et al*³³ predicted that there were at least 10 times as many cases as were confirmed in Wuhan in early February). The studies also varied markedly in their efforts to validate their models or provide uncertainty analysis around their estimates. Also, with a few exceptions, most studies did not discuss the potential measurement error associated with case data collected during the early phases of the pandemic, which likely did not capture most asymptomatic cases. The overall quality of the studies to evaluate effectiveness was thus relatively low.

DISCUSSION

Despite WHO's lack of recommendations of the adoption of travel measures and given the evidence of the limited effectiveness of such measures in other contexts at the onset of the COVID-19 pandemic, there was an unprecedented adoption of such measures during the early phase of the pandemic, both domestically and internationally, which contributed to dramatic declines in international travel. This paper reviewed the emergent evidence on the effectiveness of travel measures adopted during the early phase of the COVID-19 pandemic and identified several key findings.

First, there was a high level of agreement among the studies reviewed that the adoption of travel measures played an important role in shaping the early transmission dynamics of the COVID-19 pandemic. At the international level, studies consistently estimated that the Wuhan travel measures led to a 70%–80% reduction in cases exported in the first few weeks, and likely had a smaller effect within Mainland China, where estimates of effectiveness ranged from 10% to 70%. Also, the Wuhan travel ban likely led to delays of up to a few weeks in the importation of cases to other countries. Additional travel measures, namely a reduction in the number of flights to countries, had additional effects at reducing the number of imported cases. However, almost all the studies in this review focused on either domestic or international travel bans imposed on Wuhan and, to a lesser extent the rest of China, during the early period of the pandemic. As such, this review does not identify substantial new evidence of the effectiveness of travel-related measures aimed at controlling spread to and from other parts of the world or beyond the initial exportation of cases out of China.

Second, most of the studies also concurred that the effect of the Wuhan specific measures was short lived partially because, over time, other provinces became the source of most of the internationally exported cases from China. This suggests narrowly targeted travel-related measures against specific countries alone may not be sufficient since knowledge about where a new virus is circulating may be limited at the outset and that countries should also begin to implement domestic public health containment measures alongside international travel measures. This view is further supported by evidence identified in this review that suggests once four or more infections are introduced into a new location, there is an over 50% chance that a major outbreak will occur (absent other interventions).³³

Third, the evidence reviewed suggests timing was a key factor influencing the effectiveness of travel-related measures. Several studies supported the view that within China, had the same policies been implemented a few weeks earlier, it is likely there would have been substantially less seeding of the virus across the country and internationally. Indeed, as noted previously, some jurisdictions (such as Taiwan, Russia and Macau) acted faster than Wuhan in implementing travel measures. While the Wuhan measures may have been too slow to be optimally effective, they were still implemented a full week before the PHEIC declaration was made by the WHO.

Fourth, many of the studies focused on the effectiveness of international travel measures failed to account for the implementation of the domestic Wuhan travel ban. Although this was a domestic policy, and thus outside the remit of the IHR, this review suggests restricting travel to and from Wuhan dramatically changed the outflow of cases from the region at a crucial period. Studies that did not account for the Wuhan travel ban in their estimates, or reviews that excluded domestic travel measures, likely overestimated the effectiveness of international

travel measures. The notable exception was Chinazzi *et al.*,²⁸ which still concludes that the additional measures provided an important benefit above and beyond the effect of the Wuhan measures, through at least early March.

Fifth, during the early phase of the pandemic, there were likely large numbers of undetected cases globally, and although some studies allowed for their estimates to vary based on assumed proportions of undetected cases, the validity of the estimated effects in all of these studies is likely affected by data quality issues. Also, given that symptomatic individuals may be more likely to curb their travel than asymptomatic travellers, especially internationally and after the introduction of travel-related measures aimed at detecting symptomatic cases, modelled effectiveness studies may be biased if they do not account for this difference. Also, it is possible that some of the travel-related measures adopted (eg, screening) could have led to increased detection of cases,⁴⁸ which could further complicate the evaluation of the effectiveness of travel measures, as the measurement of the outcome was also influenced by the intervention and few studies acknowledged this limitation.

Finally, while this study identified a relatively large number of studies, we assess the quality of these studies overall to be low. Almost all of the studies identified in this review were modelled studies, and therefore, the results depend on important parameter assumptions that varied considerably. Given the rapidly evolving and dynamic nature of the pandemic, it is unclear how close to reality these assumptions were. Comparability across the studies is also undermined by a lack of standardised terminology. Furthermore, few studies attempted to isolate the potential effect of international travel-related measures from a range of domestic measures implemented concurrently, or from the other social, political or economic characteristics of the implementing or target locations or populations.

This systematic review also has several important limitations. First, while we aimed to be systematic in our search strategy as well as inclusion criteria, the rapidly expanding literature on COVID-19 pandemic almost certainly means that we likely overlooked some relevant studies. Second, although we aimed to focus on the early phase of the outbreak, it is unclear when the appropriate time was to end our review. Newer studies that have been published since we completed our literature search may present a different picture on the effectiveness of travel measures, and thus, the evidence from this study must be evaluated in this context. Third, assessments of bias in studies are challenging and are inherently subjective.

Although the WHO did not initially recommend the adoption of such measures, it had softened its stance on the adoption of such measures over time. By May, the IHR Emergency Committee had recommended that WHO updated its recommendations to include measures that were better at ‘balancing the benefits of such measures with their unintended consequences’.⁵⁵ By October, the

committee had further suggested that WHO should work with partners to develop new guidance on the use of such measures, including guidance on the use of testing and quarantine, an ongoing process.⁵⁶ Also, initiatives have commenced in recent months to review and strengthen the IHR. The universal use of travel-related measures by State Parties during the COVID-19 pandemic will likely be a major focus of discussion on the limitations of the current treaty.

Based on this review, we draw the following conclusions to inform those discussing ways to better integrate evidence into the IHR process and to inform better responses to future outbreaks. First, the findings of this review suggest that it is very difficult to know in the early phases of a novel infectious disease outbreak how effective travel measures are likely to be. As such, assessments of the potential effectiveness of such measures cannot be inferred from previous infectious disease outbreaks, especially when the clinical and epidemiological features of the virus are unknown. It also highlights the need to move from blanket assessments of the effectiveness of travel-related measures ('travel measures don't work') to acknowledge that pathogen-specific assessments of effectiveness based on possible scenarios of transmission risk may be needed ('for which types of threats might such measures be effective?'). Due to the limited transparency of the PHEIC declaration process, it is unknown what risk assessments were conducted by the Emergency Committee, or how. Given that both the level and range of measures adopted by countries during COVID-19 were very different from previous PHEICs, future assessments should consider a full range of potential scenarios.

Second, it is also clear that the effectiveness of travel measures cannot be estimated using a single fixed parameter. The effectiveness of measures will vary based on the setting, which other measures are also implemented (domestically and internationally), the extent to which they are implemented and the speed at which they are implemented. All of these factors, weighed against potential harms, also need to be taken into consideration in discussions about the potential effectiveness of international travel measures. Decision makers thus should further consider context-specific assessments of the effectiveness of such measures ('when and where might such measure be effective?').

Third, this study finds that measures implemented early were likely more effective than those implemented late. In this pandemic, the PHEIC declaration was not made until after many countries had begun to adopt travel measures, and when it was, the WHO recommended against the adoption of such measures. Also, the IHR require State Parties to provide evidence for any additional health measures that they implement. In the context of an outbreak of a novel infectious disease agent, it is unclear what constitutes evidence in the early phases of the outbreak. The importance of evidence, especially when it is unlikely that such

evidence will exist, needs to be balanced against the potential of risk and the need to implement containment measures early.

This review also highlighted areas where more research is urgently needed to understand the appropriate role of travel measures during PHEICs. First, a greater understanding of the effectiveness of travel measures adopted globally during the COVID-19, including both at early stages but more importantly at stages beyond the early phases of the pandemic, is urgently needed. For example, many of the countries that were able to successfully control their pandemic in 2020 implemented strong border control measures, and many attributed their success directly to these measures.⁵⁶ Second, there is a need to better understand the broad range of measures affecting travel beyond those covered in the reviewed studies, including the role of testing, which was not widely available during the early phase of the pandemic. Third, lack of data on true case numbers remains an underlying challenge across all of the study reviewed and thus needs to be taken more seriously in future studies. Fourth, models need to better account for how travel measures work in tandem with other measures implemented concurrently, including domestic travel measures and other public health measures. Fifth, studies need to better account for the possibility that some locations see greater benefit from travel measures than others based on geographic and socioeconomic factors. Finally, one of the rationales against the use of travel measures is their economic and social impacts, yet we were only able to identify one study that investigated their impact on non-epidemiological outcomes.

At the onset of the COVID-19 pandemic, there was a widely held belief that travel measures were unlikely to play much of a role in curbing the international spread of the virus. However, the widespread adoption, and persistent use of such measures, globally, as well as the evidence identified in this review, challenge this belief in favour of a more nuanced view. While this review emphasises that the quality of evidence remains low and highlights many methodological shortcomings in the reviewed studies, findings also identified new evidence of the impact of such measures during the early phase of the pandemic. These findings suggest travel measures did play an important role in shaping the early dynamics of the pandemic, even if they were unable to contain the virus globally on their own. Alongside many other transformations catalysed by COVID-19, the pandemic has also challenged our views of what constitutes evidence of the effectiveness of international travel measures.⁵⁷

Twitter Karen Ann Grépin @KarenGrepin, Tsi-Lok Ho @bobby_ho_hk, Summer Marion @summermarion, Julianne Piper @julianneepiper, Catherine Z Worsnop @catworsnop and Kelley Lee @profplum8

Contributors KG developed the study methodology, drafted the manuscript, and oversaw data analysis. ZL and T-LH conducted the systematic review search, article screening, data extraction and data analysis. KL, CZW, SM and JP contributed to the design of the study and provided input into the manuscript.

Funding The authors are funded by the New Frontiers in Research Fund (Grant NFRFR-2019-00009) through an operating grant awarded under the Canadian Institutes of Health Research Rapid Research Funding Opportunity.

Competing interests KL was a member of two donor-funded reviews of WHO in 1995 and 1997. She has previously received funding from WHO to conduct research on global health governance and global tobacco control and review evidence on the impacts of globalisation and infectious diseases. CZW was a member of a WHO guideline development group and technical consultation in 2019.

Patient and public involvement Patients and/or the public were not involved in the design, or conduct, or reporting, or dissemination plans of this research.

Patient consent for publication Not required.

Provenance and peer review Not commissioned; externally peer reviewed.

Data availability statement All data relevant to the study are included in the article or uploaded as supplementary information.

Open access This is an open access article distributed in accordance with the Creative Commons Attribution Non Commercial (CC BY-NC 4.0) license, which permits others to distribute, remix, adapt, build upon this work non-commercially, and license their derivative works on different terms, provided the original work is properly cited, appropriate credit is given, any changes made indicated, and the use is non-commercial. See: <http://creativecommons.org/licenses/by-nc/4.0/>.

ORCID iDs

Karen Ann Grépin <http://orcid.org/0000-0003-4368-0045>

Tsi-Lok Ho <http://orcid.org/0000-0002-1430-8861>

Summer Marion <http://orcid.org/0000-0002-5407-6823>

Julianne Piper <http://orcid.org/0000-0001-8486-1745>

Catherine Z Worsnop <http://orcid.org/0000-0002-3908-1085>

Kelley Lee <http://orcid.org/0000-0002-3625-1915>

REFERENCES

- WHO. Statement on the second meeting of the International health regulations (2005) emergency Committee regarding the outbreak of novel coronavirus (2019-nCoV), 2020. Available: [https://www.who.int/news/item/30-01-2020-statement-on-the-second-meeting-of-the-international-health-regulations-\(2005\)-emergency-committee-regarding-the-outbreak-of-novel-coronavirus-\(2019-ncov\)](https://www.who.int/news/item/30-01-2020-statement-on-the-second-meeting-of-the-international-health-regulations-(2005)-emergency-committee-regarding-the-outbreak-of-novel-coronavirus-(2019-ncov))
- Taiwan Centers for Disease Control. In response to pneumonia outbreak in Wuhan, China and related test results, Taiwan CDC remains in touch with China and world Health organization and Taiwan maintains existing disease control and prevention efforts, 2020. Available: <https://www.cdc.gov.tw/En/Bulletin/Detail/4N96uF-2yK-d7dEFFcwa0Q?typeid=158>
- Levenson M. *Scale of China's Wuhan Shutdown Is Believed to Be Without Precedent*, 2020.
- Lee K, Worsnop CZ, Grépin KA, et al. Global coordination on Cross-border travel and trade measures crucial to COVID-19 response. *Lancet* 2020;395:1593–5.
- Worsnop CZ. Concealing disease: Trade and travel barriers and the timeliness of outbreak reporting. *Int Stud Perspect* 2019;20:344–72.
- Rhymer W, Speare R. Countries' response to who's travel recommendations during the 2013–2016 Ebola outbreak. *Bull World Health Organ* 2017;95:10–17.
- Worsnop CZ. Provoking Barriers: The 2014 Ebola Outbreak and Unintended Consequences of WHO's Power to Declare a Public Health Emergency. *Global Health Governance* 2017;11:1–26.
- UNWTO. *UNWTO world tourism barometer*, 2020.
- Ryu S, Gao H, Wong JY, et al. Nonpharmaceutical measures for pandemic influenza in Nonhealthcare Settings-International Travel-Related measures. *Emerg Infect Dis* 2020;26:961–6.
- WHO. *Non-pharmaceutical public health measures for mitigating the risk and impact of epidemic and pandemic influenza*, 2019.
- Mateus ALP, Otete HE, Beck CR, et al. Effectiveness of travel restrictions in the rapid containment of human influenza: a systematic review. *Bull World Health Organ* 2014;92:868–80.
- Poletto C, Gomes MF, Pastore y Piontti A, et al. Assessing the impact of travel restrictions on international spread of the 2014 West African Ebola epidemic. *Euro Surveill* 2014;19. doi:10.2807/1560-7917.ES2014.19.42.20936. [Epub ahead of print: 23 Oct 2014].
- Bogoch II, Creatore MI, Cetron MS, et al. Assessment of the potential for international dissemination of Ebola virus via commercial air travel during the 2014 West African outbreak. *Lancet* 2015;385:29–35.
- Otsuki S, Nishiura H. Reduced risk of importing Ebola virus disease because of travel restrictions in 2014: a retrospective epidemiological modeling study. *PLoS One* 2016;11:e0163418.
- Hollingsworth TD, Ferguson NM, Anderson RM. Will travel restrictions control the International spread of pandemic influenza? *Nat Med* 2006;12:497–9.
- Nuzzo JB, Cicero AJ, Waldhorn R, et al. Travel bans will increase the damage wrought by Ebola. *Biosecure Bioterror* 2014;12:306–9.
- Vaidya R, Herten-Crabb A, Spencer J, et al. Travel restrictions and infectious disease outbreaks. *J Travel Med* 2020;27. doi:10.1093/jtm/taaa050. [Epub ahead of print: 18 May 2020].
- He X, Lau EHY, Wu P, et al. Temporal dynamics in viral shedding and transmissibility of COVID-19. *Nat Med* 2020;26:672–5.
- Anderson RM, Heesterbeek H, Klinkenberg D, et al. How will country-based mitigation measures influence the course of the COVID-19 epidemic? *Lancet* 2020;395:931–4.
- Burns J, Movsisyan A, Stratil JM, et al. Travel-related control measures to contain the COVID-19 pandemic: a rapid review. *Cochrane Database Syst Rev* 2020;10:CD013717. doi:10.1002/14651858.CD013717
- von Tigerstrom B, Wilson K. COVID-19 travel restrictions and the *International Health Regulations (2005)*. *BMJ Glob Health* 2020;5:e002629.
- Worsnop CZ et al. *Legal compliance is not enough: Cross-border travel and trade measures and COVID-19*, 2020.
- Moher D, Shamseer L, Clarke M, et al. Preferred reporting items for systematic review and meta-analysis protocols (PRISMA-P) 2015 statement. *Syst Rev* 2015;4:1.
- Iacus SM, Natale F, Santamaria C, et al. Estimating and projecting air passenger traffic during the COVID-19 coronavirus outbreak and its socio-economic impact. *Saf Sci* 2020;129:104791.
- WHO. Global research on coronavirus disease (COVID-19). Available: <https://www.who.int/emergencies/diseases/novel-coronavirus-2019/global-research-on-novel-coronavirus-2019-ncov>
- Boldog P, Tekeli T, Vizi Z, et al. Risk assessment of novel coronavirus COVID-19 outbreaks outside China. *J Clin Med* 2020;9:571.
- Klausner Z, Fattal E, Hirsch E, et al. A single holiday was the turning point of the COVID-19 policy of Israel. *Int J Infect Dis* 2020;101:368–73.
- Chinazzi M, Davis JT, Ajelli M, et al. The effect of travel restrictions on the spread of the 2019 novel coronavirus (COVID-19) outbreak. *Science* 2020;368:395–400.
- Pitman R, Fisman D, Zaric GS, et al. Dynamic transmission modeling. *Med Decis Making* 2012;32:712–21.
- Cowling BJ, Ali ST, Ng TWY, et al. Impact assessment of non-pharmaceutical interventions against coronavirus disease 2019 and influenza in Hong Kong: an observational study. *Lancet Public Health* 2020;5:e279–88.
- Anzai A, Kobayashi T, Linton NM, et al. Assessing the impact of reduced travel on exportation dynamics of novel coronavirus infection (COVID-19). *J Clin Med* 2020;9:601.
- Wells CR, Sah P, Moghadas SM, et al. Impact of international travel and border control measures on the global spread of the novel 2019 coronavirus outbreak. *Proc Natl Acad Sci U S A* 2020;117:7504–9.
- Kucharski AJ, Russell TW, Diamond C, et al. Early dynamics of transmission and control of COVID-19: a mathematical modelling study. *Lancet Infect Dis* 2020;20:553–8.
- Adiga A, Venkatramanan S, Schlitt J, et al. Evaluating the impact of international airline suspensions on the early global spread of COVID-19. *medRxiv* 2020. doi:10.1101/2020.02.20.20025882. [Epub ahead of print: 23 Feb 2020].
- Adekunle A, Meehan M, Rojas-Alvarez D, et al. Delaying the COVID-19 epidemic in Australia: evaluating the effectiveness of international travel bans. *Aust N Z J Public Health* 2020;44:257–9.
- Costantino V, Heslop DJ, MacIntyre CR. The effectiveness of full and partial travel bans against COVID-19 spread in Australia for travellers from China. *medRxiv* 2020.
- Linka K, Peirlinck M, Sahli Costabal F, et al. Outbreak dynamics of COVID-19 in Europe and the effect of travel restrictions. *Comput Methods Biomech Biomed Engin* 2020;23:710–7.
- Clifford S, Pearson CAB, Klepac P, et al. Effectiveness of interventions targeting air travellers for delaying local outbreaks of SARS-CoV-2. *J Travel Med* 2020;27. doi:10.1093/jtm/taaa068. [Epub ahead of print: 20 Aug 2020].
- Mandal S, Bhatnagar T, Arinaminpathy N, et al. Prudent public health intervention strategies to control the coronavirus disease 2019 transmission in India: a mathematical model-based approach. *Indian J Med Res* 2020;151:190–9.
- Fang H, Wang L, Yang Y. Human mobility restrictions and the spread of the novel coronavirus (2019-nCoV) in China. *J Public Econ* 2020;191:104272.

- 41 Shi Z, Fang Y. Temporal relationship between outbound traffic from Wuhan and the 2019 coronavirus disease (COVID-19) incidence in China. *Medrxiv* 2020.
- 42 Tian H, Liu Y, Li Y, *et al*. An investigation of transmission control measures during the first 50 days of the COVID-19 epidemic in China. *Science* 2020;368:638–42.
- 43 Tang B, Wang X, Li Q, *et al*. Estimation of the transmission risk of the 2019-nCoV and its implication for public health interventions. *J Clin Med* 2020;9:462.
- 44 Kraemer MUG, Yang C-H, Gutierrez B, *et al*. The effect of human mobility and control measures on the COVID-19 epidemic in China. *Science* 2020;368:493–7.
- 45 Aleta A, Hu Q, Ye J, *et al*. A data-driven assessment of early travel restrictions related to the spreading of the novel COVID-19 within mainland China. *Chaos Solitons Fractals* 2020;139:110068.
- 46 Yuan Z, Xiao Y, Dai Z, *et al*. A simple model to assess Wuhan lockdown effect and region efforts during COVID-19 epidemic in China mainland. *Medrxiv* 2020.
- 47 Hou *Jet al*. Changing transmission dynamics of COVID-19 in China: a nationwide population-based piecewise mathematical modelling study. *Medrxiv* 2020.
- 48 Li R, Pei S, Chen B, *et al*. Substantial undocumented infection facilitates the rapid dissemination of novel coronavirus (SARS-CoV-2). *Science* 2020;368:489–93.
- 49 Lau H, Khosrawipour V, Kocbach P, *et al*. The positive impact of lockdown in Wuhan on containing the COVID-19 outbreak in China. *J Travel Med* 2020;27. doi:10.1093/jtm/taaa037. [Epub ahead of print: 18 May 2020].
- 50 Jiang X, Chang L, Shi Y. A retrospective analysis of the dynamic transmission routes of the COVID-19 in mainland China. *Sci Rep* 2020;10. doi:10.1038/s41598-020-71023-9
- 51 Lai S, Ruktanonchai NW, Zhou L, *et al*. Effect of non-pharmaceutical interventions to contain COVID-19 in China. *Nature* 2020;585:410–3.
- 52 Liu K, Ai S, Song S, *et al*. Population movement, City closure in Wuhan, and geographical expansion of the COVID-19 infection in China in January 2020. *Clin Infect Dis* 2020;71:2045–51.
- 53 Wu JT, Leung K, Leung GM. Nowcasting and forecasting the potential domestic and international spread of the 2019-nCoV outbreak originating in Wuhan, China: a modelling study. *Lancet* 2020;395:689–97.
- 54 Su L, Hong N, Zhou X, *et al*. Evaluation of the secondary transmission pattern and epidemic prediction of COVID-19 in the four metropolitan areas of China. *Front Med* 2020;7:171.
- 55 WHO. Statement on the third meeting of the International health regulations (2005) emergency Committee regarding the outbreak of coronavirus disease (COVID-19), 2020. Available: [https://www.who.int/news/item/01-05-2020-statement-on-the-third-meeting-of-the-international-health-regulations-\(2005\)-emergency-committee-regarding-the-outbreak-of-coronavirus-disease-\(covid-19\)](https://www.who.int/news/item/01-05-2020-statement-on-the-third-meeting-of-the-international-health-regulations-(2005)-emergency-committee-regarding-the-outbreak-of-coronavirus-disease-(covid-19))
- 56 Han E, Tan MMJ, Turk E, *et al*. Lessons learnt from easing COVID-19 restrictions: an analysis of countries and regions in Asia Pacific and Europe. *Lancet* 2020;396:1525–34.
- 57 Greenhalgh T. Will COVID-19 be evidence-based medicine's nemesis? *PLoS Med* 2020;17:e1003266.
- 58 Hossain MP, Junus A, Zhu X, *et al*. The effects of border control and quarantine measures on global spread of COVID-19. *Medrxiv* 2020.

Appendix Table 2: Summary of included papers

Author	Published/Pre-printed		International / Interprovincial	Geographical context	Location(s) implementing measure(s)	Traveler(s) affected by measures	Travel Measures
Anzai et al. (2020)	Published	Modelled	International	Global	Wuhan	Travelers from China and specifically travelers to Japan	Suspended air transportation
Adekunle et al. (2020)	Published	Modelled	International	Australia	Australia	Travelers from China, Iran, Italy, and South Korea to Australia	Suspended air transportation; Provincial border closure
Adiga et al. (2020)	Pre-printed	Modelled	International	Global	Airlines in 24 countries	Outbound travelers from China	Suspended air transportation
Aleta et al. (2020)	Published	Modelled	Interprovincial	Mainland China	Wuhan	Travelers within Mainland China	Suspended land, air, sea transportation; Provincial border closure
Boldog et al. (2020)	Published	Modelled	International	Global	Wuhan and other countries	Outbound travelers from China	Suspended land, air, sea transportation; Entry screening
Chinazzi et al. (2020)	Published	Modelled	Both	Global	Wuhan and other countries	Outbound travelers from China	Suspended air transportation; Provincial border closure
Clifford et al. (2020)	Published	Modelled	International	Global	Destination countries	Inbound travelers	Entry and exit screening
Costantino et al. (2020)	Published	Modelled	International	Australia	Australia	Travellers from China to Australia	Suspended air transportation
Cowling et al. (2020)	Published	Observational	International*	Hong Kong SAR	Hong Kong SAR	Inbound travelers	Suspended land, air, sea transportation; Entry screening; Entry quarantine
Fang et al. (2020)	Published	Modelled	Interprovincial	Mainland China	Wuhan	Travelers to 363 cities in China from Wuhan	Provincial border closure
Hossain et al. (2020)	Published	Modelled	Interprovincial	Mainland China	Wuhan	Travelers to major cities in China from Wuhan	Provincial border closure; Entry quarantine
Hou et al. (2020)	Pre-printed	Modelled	Interprovincial	Mainland China	Wuhan	Travelers within Mainland China	Suspended land, air, sea transportation; Provincial border closure
Jiang et al. (2020)	Published	Modelled	Interprovincial	Mainland China	Wuhan	Travelers within Mainland China	Suspended land, air, sea transportation; Provincial border closure
Klausner et al. (2020)	Pre-printed	Modelled	International	Israel	Israel	Inbound travelers, especially those from China	Entry quarantine
Kraemer et al. (2020)	Published	Modelled	Interprovincial	Mainland China	Hubei and other provinces	Travelers within Mainland China	Suspended land, air, sea transportation; Provincial border closure
Kucharski et al. (2020)	Published	Modelled	International	Mainland China	Wuhan	Outbound international travelers from Wuhan	Suspended land, air, sea transportation; Provincial border closure
Lai et al. (2020)	Published	Modelled	Interprovincial	Mainland China	Wuhan and other cities within China	Travelers within Mainland China	Suspended land, air, sea transportation; Provincial border closure
Lau et al. (2020)	Published	Observational	Interprovincial	Mainland China	Wuhan	Travelers within Mainland China	Suspended land, air, sea transportation; Provincial border closure
Li et al. (2020)	Published	Modelled	Interprovincial	Mainland China	Wuhan	Travelers within Mainland China	Suspended land, air, sea transportation; Provincial border closure
Linka et al. (2020)	Published	Modelled	International	Europe	European Union member countries	Travelers within the European Union	Suspended land, air, sea transportation; National border closure
Liu et al. (2020)	Published	Observational	Interprovincial	Mainland China	Wuhan	Travelers within Mainland China	Suspended land, air, sea transportation; National border closure
Mandal et al. (2020)	Published	Modelled	International	India	India	Inbound travelers to India	Entry screening
Shi et al. (2020)	Pre-printed	Modelled	Interprovincial	Mainland China	Wuhan	Travelers within Mainland China	Suspended land, air, sea transportation; Provincial border closure
Su et al. (2020)	Published	Modelled	Interprovincial	Mainland China	Provinces within China	Travelers within Mainland China	Suspended land, air, sea transportation; Provincial border closure
Tang et al. (2020)	Published	Modelled	Interprovincial	Mainland China	Wuhan	Travelers within Mainland China	Suspended land, air, sea transportation; Provincial border closure
Tian et al. (2020)	Published	Modelled	Interprovincial	Mainland China	Wuhan	Travelers within Mainland China	Suspended air transportation; Provincial border closure
Wells et al. (2020)	Published	Modelled	International	Global	Wuhan	Inbound international travelers from China	Suspended air transportation; Provincial border closure; Entry Screening; Entry Quarantine
Wu et al. (2020)	Published	Modelled	Interprovincial	Mainland China	Wuhan and Hubei province	Travelers within Mainland China	Suspended land, air, sea transportation; Provincial border closure
Yuan et al. (2020)	Pre-printed	Modelled	Interprovincial	Mainland China	Wuhan	Travelers within Mainland China	Suspended land, air, sea transportation; Provincial border closure

* Also includes measures to control border with Mainland China but does not distinguish between international and within China travelers so only listed in the international table.

Appendix Table 1: Risk of Bias Assessment

Authors	Clear and precise definition of research question	Travel restriction measures included in analysis	Outcomes	Suitable mathematical modelling	Major model assumptions described	Other related factors adjusted	Model validated	Uncertainty analysis
Anzai et al. (2020)	Low	Low	Low	Low	Low	Moderate	High	High
Adekunle et al. (2020)	Low	Low	Low	Moderate	Low	Moderate	Low	Low
Adiga et al. (2020)	Low	Moderate	Low	Low	Low	High	Low	High
Aleta et al. (2020)	Low	Low	Low	Moderate	Low	High	Low	Low
Boldog et al. (2020)	Low	Low	Low	Low	Low	Moderate	High	Low
Chinazzi et al. (2020)	Low	Low	Low	Low	Low	Low	Low	Low
Clifford et al. (2020)	Low	Low	Low	Low	Low	High	High	Low
Costantino et al. (2020)	Low	Low	Low	Low	Low	Moderate	High	Moderate
Cowling et al. (2020)	Low	High	Low	Low	NA	High	NA	NA
Fang et al. (2020)	Low	Moderate	Low	Low	Low	Low	Low	Low
Hossain et al. (2020)	Low	Low	Low	Low	Low	Moderate	Low	High
Hou et al. (2020)	Low	High	Low	Low	Low	High	Low	Low
Jiang et al. (2020)	Low	High	Low	Low	Low	High	Low	Low
Klausner et al. (2020)	Low	High	High	High	High	High	High	High
Kraemer et al. (2020)	Low	Low	Low	Low	Low	Low	Low	Low
Kucharski et al. (2020)	Low	High	Low	Low	Low	High	Low	Low
Lai et al. (2020)	Low	Low	Low	Low	Low	Low	Low	Low
Lau et al. (2020)	Low	Moderate	Low	Low	Low	High	NA	NA
Li et al. (2020)	Low	High	Low	Low	Low	High	Low	Low
Linka et al. (2020)	Low	Low	Low	Low	Low	High	High	Low
Liu et al. (2020)	Low	High	Low	Low	Low	High	Low	Low
Mandal et al. (2020)	Low	Low	Low	Low	Low	Moderate	High	Low
Shi et al. (2020)	Low	High	Low	Low	Low	High	Low	Low
Su et al. (2020)	Low	High	Low	Low	Low	High	Low	High
Tang et al. (2020)	Low	Low	Low	Low	Low	High	Low	Low
Tian et al. (2020)	Low	Low	Low	Low	Low	Low	Low	Low
Wells et al. (2020)	Low	Low	Low	Low	Low	Low	Low	Low
Wu et al. (2020)	Low	Low	Low	Low	Low	Moderate	Low	Low
Yuan et al. (2020)	Low	Moderate	Low	Moderate	Low	High	Low	High

Notes:

Domains of risk of bias: low means the author had adequately addressed the domain; moderate represents that the domain was addressed partial or incompletely; high means the domain was poorly addressed.
NA: Not applicable.