

Figure A: Use of any psychiatric care during time of follow-up among female migrants to Sweden by year of immigration, compared with Swedish born.

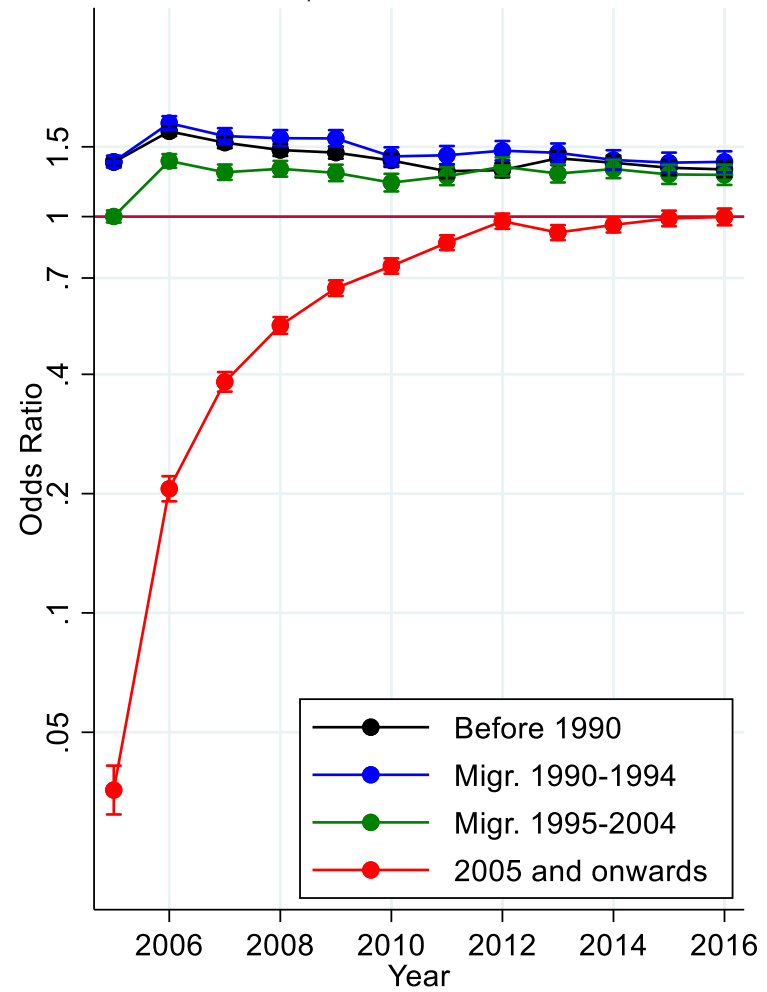


Figure B: Use of any psychiatric care during time of follow-up among male migrants to Sweden by year of immigration, compared with Swedish born.

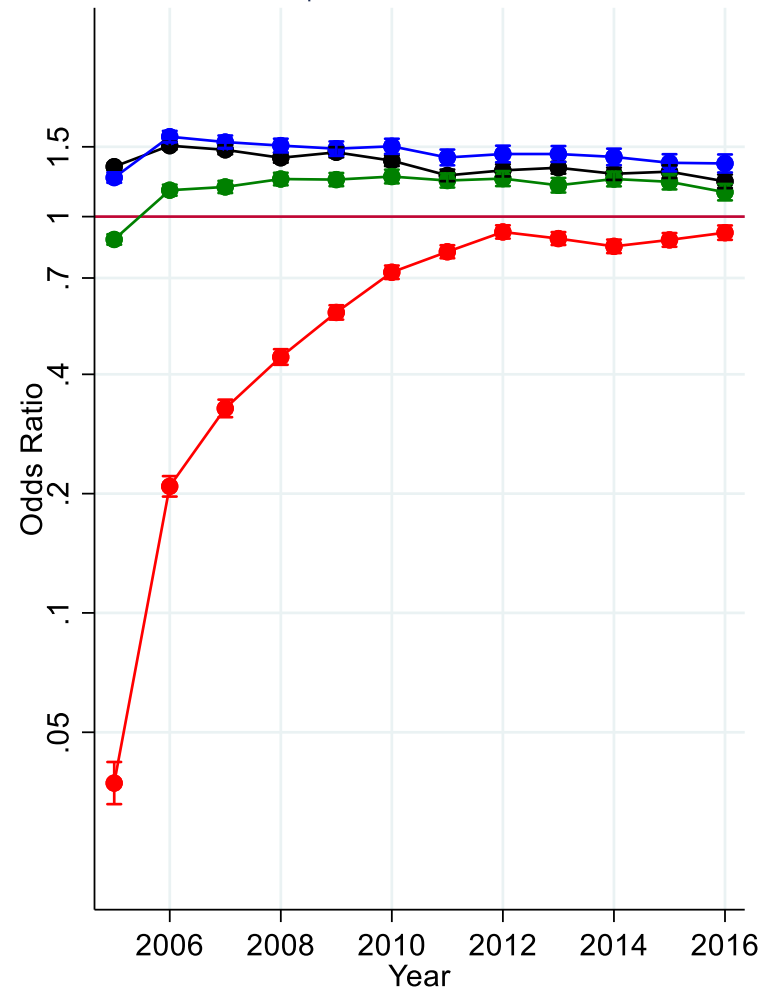


Figure C: Any psychiatric care during time of follow-up among female migrants to Sweden by region of origin, compared to Swedish born.

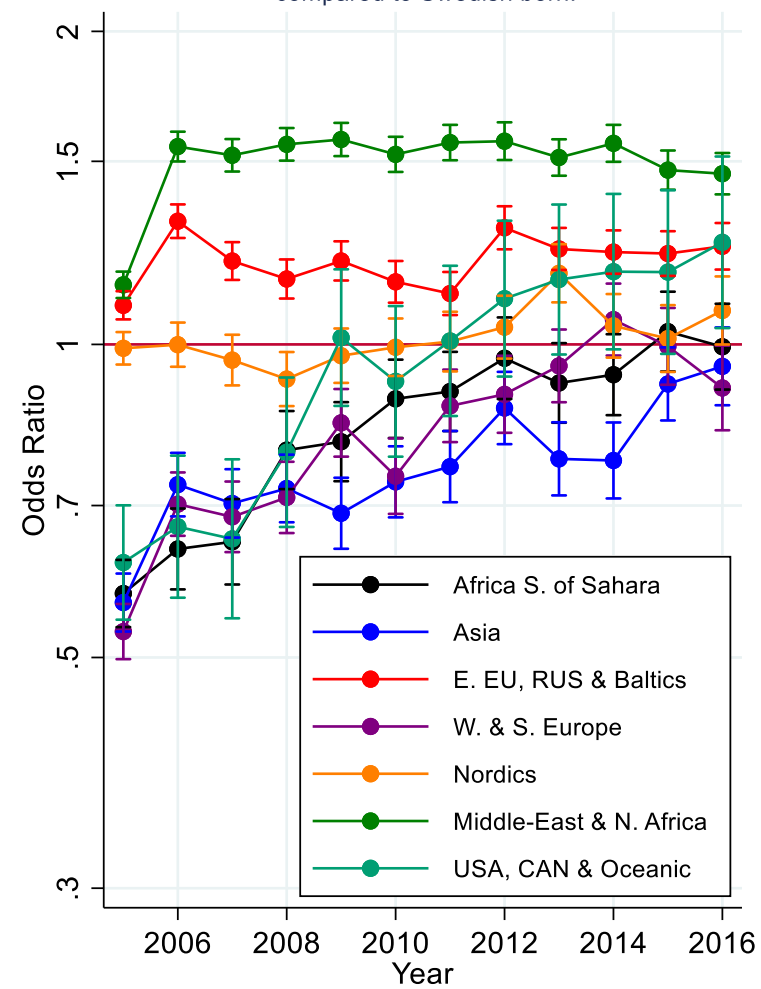


Figure D: Any psychiatric care during time of follow-up among male migrants to Sweden by region of origin, compared to Swedish born.

