

1 **Supplemental Data**

2 **Supplemental Table 1: Percent of change for each disease across the 10 years in Africans and None-Africans**

3

4 **All Participants**

	2005	2006	2007	2008	2009	2010	2011	2012	2013	2014
Infectious and parasitic diseases	27.1%	24.2%	22.0%	22.5%	17.5%	16.7%	15.2%	14.8%	12.9%	12.1%
Neoplasms	0.0%	0.0%	0.0%	0.0%	0.0%	0.0%	0.1%	0.0%	0.0%	0.0%
Diseases of the blood and blood-forming organs and certain disorders involving the immune mechanism	0.2%	0.3%	0.1%	0.2%	0.1%	0.2%	0.2%	0.2%	0.2%	0.2%
Endocrine, nutritional and metabolic diseases	0.5%	0.5%	0.6%	0.7%	0.6%	0.9%	1.0%	1.2%	1.0%	1.1%
Mental and behavioral disorders	3.2%	3.3%	3.0%	3.1%	3.4%	3.5%	3.4%	2.5%	2.7%	2.4%
Diseases of the nervous system	0.7%	0.9%	0.8%	0.7%	0.8%	0.7%	0.9%	0.9%	0.9%	1.0%
Diseases of the eye and adnexa	0.7%	0.5%	0.7%	0.6%	0.3%	0.7%	1.0%	0.7%	1.0%	0.9%
Diseases of the ear and mastoid process	5.7%	5.0%	4.6%	4.0%	4.1%	2.6%	2.7%	2.6%	2.7%	2.5%
Diseases of the circulatory system	1.9%	2.8%	2.3%	2.5%	2.6%	2.2%	2.5%	3.1%	2.7%	2.8%
Diseases of the respiratory system	22.8%	25.8%	28.8%	28.6%	29.0%	27.8%	27.1%	28.0%	29.3%	28.0%
Diseases of the digestive system	2.6%	2.5%	2.3%	3.4%	4.0%	4.0%	4.7%	3.6%	4.3%	4.0%
Diseases of the skin and subcutaneous tissue	3.9%	3.0%	3.4%	3.1%	2.8%	2.4%	2.5%	2.4%	2.7%	2.5%
Diseases of the musculoskeletal system and connective tissue	2.4%	2.5%	3.0%	3.4%	3.1%	2.6%	2.9%	3.7%	3.9%	4.4%
Diseases of the genitourinary system	2.8%	3.2%	3.2%	2.5%	2.1%	1.7%	2.1%	2.2%	1.9%	2.5%
Pregnancy, childbirth and the puerperium	0.2%	0.2%	0.1%	0.1%	0.1%	0.2%	0.1%	0.2%	0.1%	0.1%
Congenital malformations, deformations and chromosomal abnormalities	0.0%	0.0%	0.0%	0.0%	0.0%	0.0%	0.0%	0.0%	0.0%	0.0%
Symptoms, signs and abnormal clinical and laboratory findings, not elsewhere classified	11.2%	12.2%	12.0%	12.6%	18.6%	23.9%	22.9%	23.4%	22.9%	22.5%
Injury, poisoning and certain other consequences of external causes	9.3%	10.4%	10.3%	8.2%	7.9%	7.9%	8.5%	8.2%	7.5%	7.1%
Factors influencing health status and contact with health services	5.0%	2.5%	3.0%	3.7%	3.0%	2.0%	2.2%	2.2%	3.4%	5.7%

5

6

7

1 **Women**

	2005	2006	2007	2008	2009	2010	2011	2012	2013	2014
Infectious and parasitic diseases	27.5%	24.4%	22.0%	22.4%	17.6%	16.5%	15.0%	15.0%	13.1%	12.3%
Neoplasms	0.0%	0.0%	0.0%	0.0%	0.0%	0.0%	0.2%	0.0%	0.0%	0.0%
Diseases of the blood and blood-forming organs and certain disorders involving the immune mechanism	0.2%	0.3%	0.1%	0.1%	0.2%	0.3%	0.1%	0.2%	0.2%	0.2%
Endocrine, nutritional and metabolic diseases	0.4%	0.5%	0.6%	0.8%	0.5%	0.9%	1.3%	1.1%	0.7%	1.2%
Mental and behavioral disorders	4.4%	4.4%	3.8%	4.1%	4.6%	4.7%	4.6%	3.3%	3.5%	3.4%
Diseases of the nervous system	0.7%	0.9%	0.7%	0.6%	0.6%	0.8%	0.9%	0.9%	0.8%	0.8%
Diseases of the eye and adnexa	0.8%	0.5%	0.5%	0.6%	0.3%	0.5%	1.1%	0.7%	1.0%	0.9%
Diseases of the ear and mastoid process	4.9%	4.6%	4.0%	3.7%	3.6%	2.3%	2.4%	2.3%	2.5%	2.5%
Diseases of the circulatory system	2.0%	2.8%	2.3%	1.8%	2.3%	2.0%	2.6%	2.9%	2.2%	2.6%
Diseases of the respiratory system	23.0%	25.5%	29.2%	28.8%	28.6%	27.5%	26.8%	27.9%	28.8%	26.5%
Diseases of the digestive system	2.6%	2.6%	2.2%	3.5%	4.1%	3.9%	4.8%	3.4%	4.3%	4.1%
Diseases of the skin and subcutaneous tissue	3.9%	2.6%	3.2%	3.2%	2.6%	2.4%	2.3%	2.3%	2.5%	2.3%
Diseases of the musculoskeletal system and connective tissue	2.2%	2.8%	3.1%	3.5%	3.1%	2.5%	2.7%	3.8%	3.7%	4.5%
Diseases of the genitourinary system	3.4%	3.7%	3.8%	3.0%	2.6%	2.1%	2.2%	2.5%	2.1%	3.0%
Pregnancy, childbirth and the puerperium	0.3%	0.4%	0.1%	0.2%	0.2%	0.3%	0.3%	0.3%	0.2%	0.2%
Congenital malformations, deformations and chromosomal abnormalities	0.0%	0.0%	0.0%	0.0%	0.0%	0.0%	0.0%	0.0%	0.0%	0.0%
Symptoms, signs and abnormal clinical and laboratory findings, not elsewhere classified	11.6%	12.8%	12.6%	13.1%	19.1%	25.1%	23.5%	24.3%	24.9%	24.2%
Injury, poisoning and certain other consequences of external causes	7.6%	9.0%	8.8%	7.5%	7.4%	6.5%	7.0%	6.7%	6.1%	6.0%
Factors influencing health status and contact with health services	4.6%	2.2%	2.9%	3.2%	2.6%	1.8%	2.2%	2.3%	3.2%	5.3%

1 Men

	2005	2006	2007	2008	2009	2010	2011	2012	2013	2014
Infectious and parasitic diseases	26.6%	24.0%	22.1%	22.6%	17.5%	17.0%	15.5%	14.6%	12.7%	11.9%
Neoplasms	0.0%	0.0%	0.0%	0.1%	0.0%	0.0%	0.0%	0.0%	0.0%	0.0%
Diseases of the blood and blood-forming organs and certain disorders involving the immune mechanism	0.1%	0.2%	0.1%	0.2%	0.1%	0.1%	0.2%	0.2%	0.2%	0.1%
Endocrine, nutritional and metabolic diseases	0.5%	0.5%	0.6%	0.7%	0.7%	0.9%	0.7%	1.2%	1.3%	1.1%
Mental and behavioral disorders	1.9%	2.2%	2.1%	2.0%	2.1%	2.0%	1.9%	1.5%	1.6%	1.3%
Diseases of the nervous system	0.8%	0.9%	0.8%	0.8%	1.0%	0.6%	0.9%	0.9%	0.9%	1.1%
Diseases of the eye and adnexa	0.6%	0.6%	0.8%	0.5%	0.3%	0.9%	0.9%	0.8%	1.0%	1.0%
Diseases of the ear and mastoid process	6.6%	5.5%	5.1%	4.3%	4.6%	2.9%	3.0%	2.9%	2.9%	2.5%
Diseases of the circulatory system	1.7%	2.9%	2.3%	3.2%	2.9%	2.3%	2.4%	3.4%	3.2%	3.0%
Diseases of the respiratory system	22.6%	26.1%	28.5%	28.4%	29.3%	28.3%	27.5%	28.2%	29.9%	29.8%
Diseases of the digestive system	2.6%	2.4%	2.4%	3.3%	3.9%	4.2%	4.7%	3.8%	4.2%	4.0%
Diseases of the skin and subcutaneous tissue	3.8%	3.4%	3.7%	3.1%	3.1%	2.5%	2.8%	2.6%	2.9%	2.7%
Diseases of the musculoskeletal system and connective tissue	2.7%	2.3%	2.8%	3.3%	3.2%	2.8%	3.0%	3.6%	4.0%	4.2%
Diseases of the genitourinary system	2.1%	2.6%	2.5%	2.1%	1.5%	1.2%	1.9%	1.8%	1.7%	2.0%
Pregnancy, childbirth and the puerperium	0.0%	0.0%	0.0%	0.0%	0.0%	0.0%	0.0%	0.0%	0.0%	0.0%
Congenital malformations, deformations and chromosomal abnormalities	0.0%	0.0%	0.0%	0.0%	0.0%	0.0%	0.0%	0.0%	0.0%	0.0%
Symptoms, signs and abnormal clinical and laboratory findings, not elsewhere classified	10.8%	11.6%	11.3%	12.0%	18.0%	22.6%	22.2%	22.2%	20.5%	20.5%
Injury, poisoning and certain other consequences of external causes	11.2%	11.9%	11.8%	9.1%	8.4%	9.5%	10.1%	10.1%	9.2%	8.5%
Factors influencing health status and contact with health services	5.3%	2.8%	3.1%	4.3%	3.4%	2.3%	2.3%	2.2%	3.8%	6.2%

1 **Supplemental Table 2: Percent of change for each disease across the 10 years in Africans**

2

3 **All Participants**

	2005	2006	2007	2008	2009	2010	2011	2012	2013	2014
Infectious and parasitic diseases	27.3%	21.2%	19.6%	20.9%	15.1%	14.9%	13.9%	12.8%	10.8%	10.6%
Neoplasms	0.0%	0.1%	0.0%	0.0%	0.0%	0.0%	0.1%	0.0%	0.0%	0.0%
Diseases of the blood and blood-forming organs and certain disorders involving the immune mechanism	0.3%	0.6%	0.2%	0.3%	0.3%	0.3%	0.2%	0.3%	0.3%	0.3%
Endocrine, nutritional and metabolic diseases	1.0%	1.1%	1.2%	1.4%	1.0%	1.6%	1.7%	1.9%	1.5%	1.5%
Mental and behavioral disorders	4.6%	5.0%	4.6%	4.3%	5.0%	4.6%	4.2%	2.8%	3.2%	3.1%
Diseases of the nervous system	1.6%	1.6%	1.3%	1.2%	1.2%	1.0%	1.2%	1.3%	1.2%	1.4%
Diseases of the eye and adnexa	0.3%	0.4%	0.4%	0.4%	0.2%	0.6%	0.6%	0.6%	0.7%	0.7%
Diseases of the ear and mastoid process	2.0%	2.8%	2.7%	2.1%	2.1%	1.7%	1.8%	1.8%	1.4%	1.5%
Diseases of the circulatory system	3.6%	5.7%	4.2%	4.3%	4.2%	3.2%	3.7%	4.2%	3.7%	3.9%
Diseases of the respiratory system	17.0%	20.0%	24.0%	24.5%	26.5%	24.8%	25.1%	25.8%	27.9%	26.5%
Diseases of the digestive system	2.6%	2.8%	2.6%	3.2%	3.8%	4.1%	4.8%	4.0%	4.4%	3.9%
Diseases of the skin and subcutaneous tissue	2.3%	1.6%	1.8%	1.6%	1.7%	1.5%	1.5%	1.6%	1.9%	1.7%
Diseases of the musculoskeletal system and connective tissue	1.8%	2.3%	2.7%	3.4%	3.1%	2.8%	2.7%	4.1%	4.2%	4.7%
Diseases of the genitourinary system	2.0%	2.8%	3.1%	2.4%	1.7%	1.5%	2.2%	2.1%	1.9%	2.0%
Pregnancy, childbirth and the puerperium	0.3%	0.4%	0.2%	0.1%	0.2%	0.2%	0.2%	0.3%	0.1%	0.2%
Congenital malformations, deformations and chromosomal abnormalities	0.0%	0.0%	0.0%	0.0%	0.0%	0.0%	0.0%	0.0%	0.0%	0.0%
Symptoms, signs and abnormal clinical and laboratory findings, not elsewhere classified	13.1%	16.3%	14.9%	15.4%	22.5%	26.5%	25.1%	26.7%	26.2%	26.2%
Injury, poisoning and certain other consequences of external causes	12.5%	11.7%	12.3%	9.4%	7.6%	8.6%	8.9%	8.4%	7.5%	7.0%
Factors influencing health status and contact with health services	7.7%	3.7%	4.4%	5.2%	3.9%	2.2%	2.0%	1.5%	3.2%	4.8%

4

5

6

1 **Women**

	2005	2006	2007	2008	2009	2010	2011	2012	2013	2014
Infectious and parasitic diseases	27.5%	20.7%	18.8%	20.3%	14.4%	14.4%	13.7%	12.5%	10.9%	10.6%
Neoplasms	0.0%	0.1%	0.0%	0.0%	0.0%	0.0%	0.2%	0.0%	0.0%	0.0%
Diseases of the blood and blood-forming organs and certain disorders involving the immune mechanism	0.2%	0.9%	0.2%	0.2%	0.3%	0.4%	0.2%	0.3%	0.3%	0.3%
Endocrine, nutritional and metabolic diseases	0.8%	0.9%	1.2%	1.6%	0.8%	1.5%	2.1%	1.8%	1.1%	1.3%
Mental and behavioral disorders	6.2%	6.9%	5.9%	6.1%	6.7%	6.5%	5.5%	3.6%	4.2%	4.3%
Diseases of the nervous system	1.6%	1.2%	1.1%	0.9%	0.9%	1.3%	1.0%	1.3%	1.1%	1.2%
Diseases of the eye and adnexa	0.3%	0.3%	0.3%	0.3%	0.1%	0.6%	0.7%	0.6%	0.8%	0.7%
Diseases of the ear and mastoid process	1.8%	3.0%	2.7%	1.9%	1.9%	1.6%	1.7%	1.6%	1.4%	1.6%
Diseases of the circulatory system	4.4%	5.6%	4.5%	3.6%	3.9%	3.1%	3.9%	4.2%	3.0%	3.6%
Diseases of the respiratory system	16.2%	20.1%	23.9%	24.9%	26.0%	23.6%	24.8%	25.5%	27.0%	24.8%
Diseases of the digestive system	2.7%	2.7%	2.2%	3.6%	3.5%	4.0%	4.7%	3.7%	4.6%	3.9%
Diseases of the skin and subcutaneous tissue	2.4%	1.9%	1.5%	1.5%	1.7%	1.5%	1.5%	1.8%	1.7%	1.5%
Diseases of the musculoskeletal system and connective tissue	1.9%	3.1%	3.2%	3.6%	2.8%	2.6%	2.5%	4.5%	3.9%	5.1%
Diseases of the genitourinary system	2.5%	3.5%	3.8%	2.8%	2.3%	2.1%	2.3%	2.2%	2.2%	2.4%
Pregnancy, childbirth and the puerperium	0.5%	0.7%	0.3%	0.1%	0.4%	0.3%	0.4%	0.5%	0.2%	0.4%
Congenital malformations, deformations and chromosomal abnormalities	0.0%	0.0%	0.1%	0.0%	0.0%	0.0%	0.0%	0.0%	0.0%	0.0%
Symptoms, signs and abnormal clinical and laboratory findings, not elsewhere classified	14.7%	16.8%	16.1%	16.4%	23.5%	28.1%	25.8%	27.9%	28.7%	28.5%
Injury, poisoning and certain other consequences of external causes	9.5%	8.6%	9.7%	7.5%	7.2%	6.4%	7.3%	6.6%	5.8%	5.5%
Factors influencing health status and contact with health services	6.7%	3.0%	4.5%	4.7%	3.4%	2.0%	1.7%	1.5%	3.1%	4.3%

2

3

1 **Men**

	2005	2006	2007	2008	2009	2010	2011	2012	2013	2014
Infectious and parasitic diseases	27.1%	21.9%	20.4%	21.6%	15.9%	15.5%	14.2%	13.1%	10.6%	10.6%
Neoplasms	0.1%	0.1%	0.0%	0.0%	0.0%	0.0%	0.0%	0.0%	0.0%	0.0%
Diseases of the blood and blood-forming organs and certain disorders involving the immune mechanism	0.4%	0.3%	0.1%	0.4%	0.1%	0.1%	0.3%	0.2%	0.2%	0.2%
Endocrine, nutritional and metabolic diseases	1.1%	1.2%	1.2%	1.3%	1.2%	1.6%	1.2%	1.9%	2.0%	1.7%
Mental and behavioral disorders	2.7%	2.7%	3.2%	2.1%	2.8%	2.2%	2.5%	1.7%	1.8%	1.5%
Diseases of the nervous system	1.5%	2.0%	1.6%	1.5%	1.5%	0.7%	1.4%	1.2%	1.4%	1.7%
Diseases of the eye and adnexa	0.2%	0.4%	0.5%	0.4%	0.2%	0.7%	0.4%	0.7%	0.5%	0.8%
Diseases of the ear and mastoid process	2.2%	2.5%	2.6%	2.3%	2.3%	1.9%	2.0%	2.0%	1.5%	1.5%
Diseases of the circulatory system	2.7%	5.8%	3.9%	5.0%	4.6%	3.3%	3.5%	4.2%	4.5%	4.4%
Diseases of the respiratory system	18.0%	19.9%	24.0%	24.0%	27.1%	26.3%	25.5%	26.2%	29.1%	28.6%
Diseases of the digestive system	2.6%	2.9%	3.0%	2.6%	4.2%	4.2%	4.9%	4.5%	4.1%	4.0%
Diseases of the skin and subcutaneous tissue	2.3%	1.4%	2.3%	1.6%	1.7%	1.4%	1.5%	1.5%	2.0%	1.9%
Diseases of the musculoskeletal system and connective tissue	1.7%	1.4%	2.1%	3.2%	3.5%	2.9%	2.9%	3.6%	4.5%	4.3%
Diseases of the genitourinary system	1.4%	2.0%	2.3%	2.0%	1.0%	0.7%	2.1%	1.9%	1.6%	1.5%
Pregnancy, childbirth and the puerperium	0.0%	0.1%	0.0%	0.1%	0.0%	0.0%	0.0%	0.1%	0.0%	0.0%
Congenital malformations, deformations and chromosomal abnormalities	0.0%	0.0%	0.0%	0.1%	0.0%	0.0%	0.0%	0.0%	0.0%	0.0%
Symptoms, signs and abnormal clinical and laboratory findings, not elsewhere classified	11.3%	15.6%	13.5%	14.3%	21.2%	24.4%	24.2%	25.1%	23.1%	23.1%
Injury, poisoning and certain other consequences of external causes	15.9%	15.3%	15.0%	11.5%	8.2%	11.4%	11.0%	10.7%	9.8%	8.9%
Factors influencing health status and contact with health services	8.8%	4.6%	4.3%	5.9%	4.4%	2.6%	2.4%	1.5%	3.4%	5.4%

1 **Supplemental Table 3: Percent of change for each disease across the 10 years in None-Africans (others)**

2

3 **All Participants**

	2005	2006	2007	2008	2009	2010	2011	2012	2013	2014
Infectious and parasitic diseases	26.9%	25.8%	23.3%	23.5%	19.5%	18.6%	16.7%	17.4%	15.8%	14.1%
Neoplasms	0.0%	0.0%	0.0%	0.0%	0.0%	0.0%	0.1%	0.0%	0.0%	0.0%
Diseases of the blood and blood-forming organs and certain disorders involving the immune mechanism	0.1%	0.1%	0.0%	0.1%	0.0%	0.1%	0.0%	0.2%	0.1%	0.1%
Endocrine, nutritional and metabolic diseases	0.2%	0.2%	0.3%	0.3%	0.3%	0.2%	0.3%	0.3%	0.3%	0.7%
Mental and behavioral disorders	2.5%	2.5%	2.2%	2.4%	2.2%	2.3%	2.4%	2.1%	2.0%	1.5%
Diseases of the nervous system	0.3%	0.6%	0.5%	0.4%	0.4%	0.4%	0.5%	0.4%	0.3%	0.4%
Diseases of the eye and adnexa	0.9%	0.6%	0.8%	0.7%	0.4%	0.8%	1.4%	0.9%	1.3%	1.2%
Diseases of the ear and mastoid process	7.6%	6.2%	5.5%	5.1%	5.7%	3.5%	3.6%	3.6%	4.4%	3.8%
Diseases of the circulatory system	1.0%	1.3%	1.3%	1.5%	1.3%	1.1%	1.2%	1.7%	1.3%	1.3%
Diseases of the respiratory system	25.7%	28.9%	31.3%	31.0%	30.9%	30.9%	29.4%	30.8%	31.1%	30.1%
Diseases of the digestive system	2.5%	2.3%	2.2%	3.5%	4.1%	4.0%	4.7%	3.1%	4.1%	4.2%
Diseases of the skin and subcutaneous tissue	4.6%	3.7%	4.2%	4.0%	3.7%	3.4%	3.7%	3.5%	3.7%	3.5%
Diseases of the musculoskeletal system and connective tissue	2.7%	2.7%	3.1%	3.3%	3.2%	2.5%	3.1%	3.2%	3.5%	3.9%
Diseases of the genitourinary system	3.2%	3.4%	3.2%	2.6%	2.4%	1.9%	1.9%	2.3%	2.0%	3.2%
Pregnancy, childbirth and the puerperium	0.1%	0.1%	0.0%	0.2%	0.1%	0.1%	0.1%	0.0%	0.2%	0.0%
Congenital malformations, deformations and chromosomal abnormalities	0.0%	0.0%	0.0%	0.0%	0.0%	0.0%	0.0%	0.0%	0.0%	0.0%
Symptoms, signs and abnormal clinical and laboratory findings, not elsewhere classified	10.3%	10.0%	10.5%	10.9%	15.5%	21.3%	20.4%	19.2%	18.5%	17.7%
Injury, poisoning and certain other consequences of external causes	7.8%	9.8%	9.3%	7.6%	8.1%	7.1%	8.0%	8.0%	7.5%	7.4%
Factors influencing health status and contact with health services	3.6%	1.8%	2.2%	2.9%	2.3%	1.8%	2.5%	3.2%	3.8%	7.0%

4

1 **Women**

	2005	2006	2007	2008	2009	2010	2011	2012	2013	2014
Infectious and parasitic diseases	27.4%	26.5%	23.7%	23.8%	20.4%	18.8%	16.5%	18.3%	16.3%	14.7%
Neoplasms	0.0%	0.0%	0.0%	0.0%	0.0%	0.0%	0.2%	0.0%	0.0%	0.0%
Diseases of the blood and blood-forming organs and certain disorders involving the immune mechanism	0.1%	0.0%	0.0%	0.1%	0.1%	0.1%	0.1%	0.1%	0.1%	0.2%
Endocrine, nutritional and metabolic diseases	0.2%	0.2%	0.3%	0.3%	0.2%	0.2%	0.3%	0.3%	0.2%	1.0%
Mental and behavioral disorders	3.4%	3.0%	2.8%	2.8%	2.8%	2.7%	3.5%	2.8%	2.5%	2.0%
Diseases of the nervous system	0.2%	0.8%	0.5%	0.4%	0.3%	0.3%	0.7%	0.3%	0.4%	0.4%
Diseases of the eye and adnexa	1.1%	0.6%	0.6%	0.8%	0.4%	0.5%	1.6%	0.9%	1.2%	1.1%
Diseases of the ear and mastoid process	6.5%	5.5%	4.7%	4.8%	5.1%	3.1%	3.3%	3.3%	4.0%	3.8%
Diseases of the circulatory system	0.7%	1.2%	1.1%	0.7%	0.9%	0.9%	1.0%	1.2%	1.0%	1.2%
Diseases of the respiratory system	26.6%	28.6%	32.0%	31.2%	30.9%	31.7%	29.2%	31.2%	31.3%	29.0%
Diseases of the digestive system	2.5%	2.6%	2.2%	3.4%	4.6%	3.8%	4.9%	3.2%	4.0%	4.4%
Diseases of the skin and subcutaneous tissue	4.7%	3.0%	4.1%	4.2%	3.3%	3.2%	3.3%	3.0%	3.5%	3.4%
Diseases of the musculoskeletal system and connective tissue	2.3%	2.6%	3.0%	3.4%	3.4%	2.4%	3.1%	2.8%	3.5%	3.7%
Diseases of the genitourinary system	3.9%	3.8%	3.9%	3.1%	2.8%	2.1%	2.1%	2.9%	2.1%	3.9%
Pregnancy, childbirth and the puerperium	0.3%	0.3%	0.0%	0.3%	0.1%	0.2%	0.1%	0.1%	0.3%	0.0%
Congenital malformations, deformations and chromosomal abnormalities	0.0%	0.0%	0.0%	0.0%	0.0%	0.0%	0.0%	0.0%	0.0%	0.0%
Symptoms, signs and abnormal clinical and laboratory findings, not elsewhere classified	10.0%	10.4%	10.8%	11.1%	15.2%	21.7%	20.7%	19.5%	19.5%	17.8%
Injury, poisoning and certain other consequences of external causes	6.5%	9.3%	8.2%	7.4%	7.6%	6.7%	6.7%	6.8%	6.5%	6.6%
Factors influencing health status and contact with health services	3.5%	1.7%	1.9%	2.3%	1.9%	1.6%	2.8%	3.3%	3.4%	6.8%

1 Men (N=24160)

	2005	2006	2007	2008	2009	2010	2011	2012	2013	2014
Infectious and parasitic diseases	26.4%	25.0%	22.9%	23.2%	18.6%	18.4%	16.9%	16.4%	15.2%	13.4%
Neoplasms	0.0%	0.0%	0.1%	0.1%	0.0%	0.0%	0.0%	0.0%	0.0%	0.0%
Diseases of the blood and blood-forming organs and certain disorders involving the immune mechanism	0.0%	0.2%	0.1%	0.2%	0.0%	0.1%	0.0%	0.3%	0.2%	0.0%
Endocrine, nutritional and metabolic diseases	0.3%	0.2%	0.3%	0.4%	0.4%	0.2%	0.2%	0.3%	0.4%	0.4%
Mental and behavioral disorders	1.6%	1.9%	1.6%	1.9%	1.6%	1.8%	1.4%	1.2%	1.4%	0.9%
Diseases of the nervous system	0.5%	0.4%	0.5%	0.3%	0.6%	0.5%	0.4%	0.5%	0.3%	0.5%
Diseases of the eye and adnexa	0.7%	0.7%	0.9%	0.6%	0.3%	1.1%	1.3%	0.8%	1.5%	1.3%
Diseases of the ear and mastoid process	8.6%	6.9%	6.3%	5.4%	6.4%	3.9%	4.0%	3.9%	4.7%	3.8%
Diseases of the circulatory system	1.3%	1.5%	1.5%	2.3%	1.6%	1.3%	1.3%	2.4%	1.7%	1.4%
Diseases of the respiratory system	24.7%	29.2%	30.6%	30.8%	30.9%	30.1%	29.6%	30.4%	30.8%	31.1%
Diseases of the digestive system	2.6%	2.1%	2.2%	3.7%	3.6%	4.2%	4.4%	3.1%	4.3%	4.0%
Diseases of the skin and subcutaneous tissue	4.5%	4.4%	4.3%	3.9%	4.1%	3.5%	4.2%	3.9%	4.0%	3.5%
Diseases of the musculoskeletal system and connective tissue	3.1%	2.7%	3.2%	3.3%	2.9%	2.6%	3.1%	3.7%	3.5%	4.2%
Diseases of the genitourinary system	2.4%	3.0%	2.6%	2.1%	1.9%	1.7%	1.7%	1.6%	1.9%	2.6%
Pregnancy, childbirth and the puerperium	0.0%	0.0%	0.0%	0.0%	0.0%	0.0%	0.0%	0.0%	0.0%	0.0%
Congenital malformations, deformations and chromosomal abnormalities	0.0%	0.0%	0.0%	0.0%	0.0%	0.0%	0.0%	0.0%	0.0%	0.0%
Symptoms, signs and abnormal clinical and laboratory findings, not elsewhere classified	10.6%	9.7%	10.2%	10.7%	15.8%	20.9%	20.2%	19.0%	17.4%	17.6%
Injury, poisoning and certain other consequences of external causes	9.0%	10.3%	10.3%	7.8%	8.6%	7.6%	9.3%	9.4%	8.6%	8.2%
Factors influencing health status and contact with health services	3.7%	2.0%	2.5%	3.5%	2.7%	2.0%	2.2%	3.0%	4.2%	7.2%

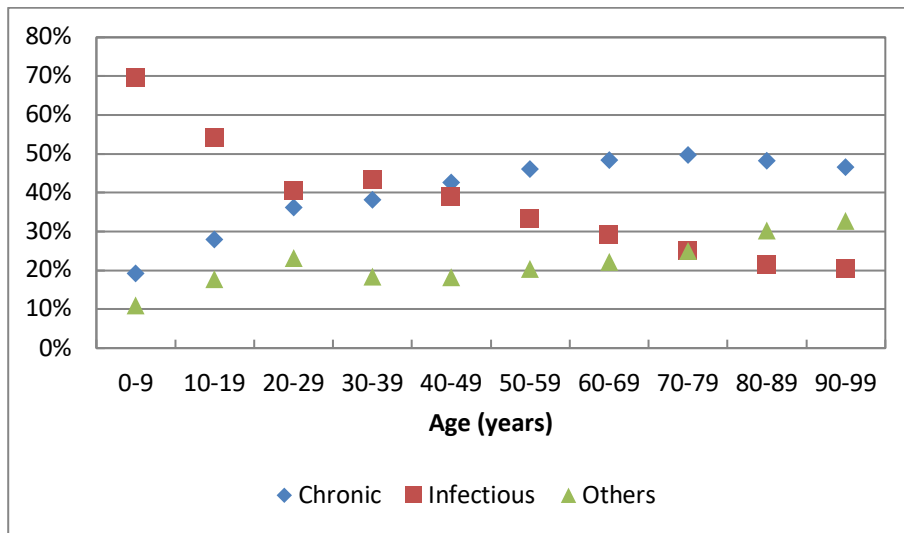
Supplemental Table 4: The table below shows the distribution of patients served by SOS, by ethnicity/race.

	2005	2006	2007	2008	2009	2010	2011	2012	2013	2014
Africans	33%	35%	33%	37%	45%	51%	53%	56%	57%	57%
Others	67%	65%	67%	63%	55%	49%	47%	44%	43%	43%

Supplemental Figure 1. Flow chart

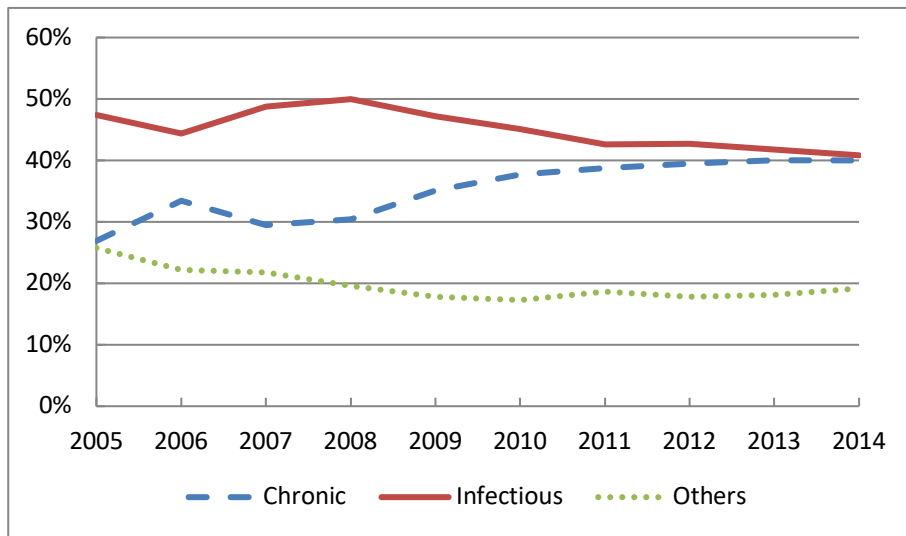


Supplemental Figure 2: Main categories of emergency medical visits in African men and women by age groups



*Data on 49,702 consultations in African men and women over a 10-year period.

Supplemental Figure 3. Broad diagnostic categories of emergency medical consultations in African men and women over 10 years in Dakar, Senegal.*



*Data on 49,702 consultations in African patients over a 10-year period.