

Reduction of secondary transmission of SARS-CoV-2 in households by face mask use, disinfection and social distancing: a cohort study in Beijing, China

Yu Wang,¹ Huaiyu Tian,² Li Zhang,¹ Man Zhang,³ Dandan Guo,⁴ Wenting Wu,¹ Xingxing Zhang,³ Ge Lin Kan,⁵ Lei Jia,¹ Da Huo,¹ Baiwei Liu,¹ Xiaoli Wang,¹ Ying Sun,¹ Quanyi Wang,¹ Peng Yang,³ C. Raina MacIntyre^{6,7}

To cite: Wang Y, Tian H, Zhang L, *et al*. Reduction of secondary transmission of SARS-CoV-2 in households by face mask use, disinfection and social distancing: a cohort study in Beijing, China. *BMJ Global Health* 2020;**5**:e002794. doi:10.1136/bmjgh-2020-002794

Handling editor Seye Abimbola

Received 1 May 2020
Revised 9 May 2020
Accepted 11 May 2020



© Author(s) (or their employer(s)) 2020. Re-use permitted under CC BY-NC. No commercial re-use. See rights and permissions. Published by BMJ.

For numbered affiliations see end of article.

Correspondence to

Dr Quanyi Wang;
wangquanyi@protonmail.com
and
Dr Peng Yang;
yangpengcdc@163.com

ABSTRACT

Introduction Transmission of COVID-19 within families and close contacts accounts for the majority of epidemic growth. Community mask wearing, hand washing and social distancing are thought to be effective but there is little evidence to inform or support community members on COVID-19 risk reduction within families.

Methods A retrospective cohort study of 335 people in 124 families and with at least one laboratory confirmed COVID-19 case was conducted from 28 February to 27 March 2020, in Beijing, China. The outcome of interest was secondary transmission of severe acute respiratory syndrome coronavirus 2 (SARS-CoV-2) within the family. Characteristics and practices of primary cases, of well family contacts and household hygiene practices were analysed as predictors of secondary transmission.

Results The secondary attack rate in families was 23.0% (77/335). Face mask use by the primary case and family contacts before the primary case developed symptoms was 79% effective in reducing transmission (OR=0.21, 95% CI 0.06 to 0.79). Daily use of chlorine or ethanol based disinfectant in households was 77% effective (OR=0.23, 95% CI 0.07 to 0.84). Wearing a mask after illness onset of the primary case was not significantly protective. The risk of household transmission was 18 times higher with frequent daily close contact with the primary case (OR=18.26, 95% CI 3.93 to 84.79), and four times higher if the primary case had diarrhoea (OR=4.10, 95% CI 1.08 to 15.60). Household crowding was not significant.

Conclusion The study confirms the highest risk of transmission prior to symptom onset, and provides the first evidence of the effectiveness of mask use, disinfection and social distancing in preventing COVID-19. We also found evidence of faecal transmission. This can inform guidelines for community prevention in settings of intense COVID-19 epidemics.

Summary box

What is already known?

- ▶ Mitigation of the COVID-19 pandemic depends solely on non-pharmaceutical interventions until drugs or vaccines are available. Transmission of COVID-19 within families and close contacts accounts for the majority of epidemic growth. Community mask wearing, hand washing and social distancing are thought to be effective but the evidence is not clear.

What are the new findings?

- ▶ The overall secondary attack rate in households was 23.0%. Face masks were 79% effective and disinfection was 77% effective in preventing transmission, while close frequent contact in the household increased the risk of transmission 18 times, and diarrhoea in the index patient increased the risk by four times. The results demonstrate the importance of the pre-symptomatic infectiousness of COVID-19 patients and shows that wearing masks after illness onset does not protect.

What do the new findings imply?

- ▶ The findings inform universal face mask use and social distancing, not just in public spaces, but inside the household with members at risk of getting infected. This further supports universal face mask use, and also provides guidance on risk reduction for families living with someone in quarantine or isolation, and families of health workers, who may face ongoing risk.

INTRODUCTION

In the absence of a vaccine for COVID-19, non-pharmaceutical interventions (NPIs) are the only available disease control measures. We have shown that population level NPIs, including travel bans and the national emergency response, were effective in flattening

the COVID-19 epidemic curve in China.¹ However, the effect of other NPIs, such as mask use and hygiene practices, have not been well studied in the COVID-19 pandemic.

In the USA, the use of face masks in the community has been recommended.² It is thought that universal face mask use (UFMU) may reduce outward transmission from asymptotically infected people and protect well people from becoming infected. However, the World Health Organization and Public Health England recommend against UFMU on the grounds that there is little evidence from randomised controlled trials to support this. Some experts suggest that in a pandemic, the precautionary principle should be used and UFMU encouraged as it is unlikely to cause harm and may result in public health gain.^{3 4} In countries where personal protective equipment is scarce, people are making their own masks.

In China, over 70% of human-to-human transmission of severe acute respiratory syndrome coronavirus 2 (SARS-CoV-2) occurred in families.^{5 6} However, data to inform COVID-19 risk reduction in households are unavailable. Given epidemic growth is dominated by household transmission,^{5 6} studying the use of NPIs, such as face masks, social distancing and disinfection in the household setting, may inform community epidemic control and prevent transmission of COVID-19 in households.

METHODS

Study population and design

We conducted a retrospective cohort study involving families of laboratory confirmed COVID-19 cases in Beijing, China. We defined family members as those who had lived with primary cases in a house for 4 days before and for more than 24 hours after the primary cases developed illness related to COVID-19. As of 21 February 2020, all laboratory confirmed COVID-19 cases reported in Beijing were enrolled in our study and followed-up. The outcome of interest was secondary transmission in the household. Families with secondary transmission were defined as those where some or all of the family members become infected within one incubation period (2 weeks) of symptom onset of the primary case.

To analyse the predictors of household transmission, we compared families with and without secondary transmission for various measured risk factors, preventive interventions and exposures.

Definition of confirmed case

According to national prevention and control guideline (fifth edition),⁷ confirmed cases were those who met the clinical, epidemiological and laboratory testing criteria for COVID-19 simultaneously.

1. Clinical criteria included: (a) fever and/or one or more respiratory symptoms; (b) radiological evidence of pneumonia; (c) white blood cell count normal or

decreased, and lymphocyte count decreased at the early stage of illness.

2. Epidemiological criteria included: (a) visits to/living in Wuhan or cities around Wuhan or other communities which had already reported COVID-19 cases in the 14 days prior to the onset of symptoms; (b) having contact with a person known to have infection with SARS-CoV-2 in the 14 days prior to onset of symptoms; (c) having contact with a person who had fever or respiratory symptoms and came from Wuhan or adjacent cities or other communities which had already reported COVID-19 cases in the 14 days prior to onset of symptoms; (d) being one of the cluster cases.

Suspected cases met one of the epidemiological criteria and any two of the clinical criteria, or met all of the clinical criteria. Confirmed cases were those suspected cases who met one of the following criteria: (a) respiratory or blood specimen tested positive for SARS-CoV-2 by real time reverse transcriptase-polymerase chain reaction; (b) virus in respiratory or blood specimen was highly homologous with known SARS-CoV-2 through gene sequencing.

Data collection

A three part structured questionnaire was developed. The first part included demographic and clinical information of the primary case. The second part was mainly focused on the primary case's knowledge about and attitudes toward COVID-19, and their self-reported practices (mask wearing, social distancing, living arrangements) and activities in the home. The third part was about self-reported behaviours of all family members, as well as the family's accommodation and household hygiene practices from 4 days before the illness onset to the day the primary case was isolated, including room ventilation, room cleaning and disinfection. Close contact was defined as being within 1 m or 3 feet of the primary case, such as eating around a table or sitting together watching TV. The frequency of contact, disinfection and ventilation was measured.

After diagnosis, the primary case was hospitalised as per standard practice in Beijing. Eligible primary cases and their family members were interviewed between 28 February and 8 March. Data on the primary case were extracted from epidemiological investigating reports from Beijing Centre for Disease Prevention and Control and supplemented by interview.

The clinical severity of the COVID-19 case was categorised as mild, severe or critical. Mild disease included non-pneumonia and mild pneumonia cases. Severe disease was characterised by dyspnoea, respiratory frequency ≥ 30 /min, blood oxygen saturation $\leq 93\%$, PaO₂/FiO₂ ratio < 300 and/or lung infiltrates $> 50\%$ within 24–48 hours. Critical cases were those who exhibited respiratory failure, septic shock and/or multiple organ dysfunction/failure.⁸

Statistical analysis

Risk factors for secondary transmission were analysed by characteristics of the primary case, characteristics of well family members and household hygiene practices. Categorical variables are presented as counts and percentages, and continuous variables as medians (IQR). The χ^2 test and Fisher exact test were applied to compare difference between groups when necessary. A composite COVID-19 knowledge score and hand hygiene score were created with multiple sub-questions. A multivariable logistic regression model was used to identify risk factors associated with SARS-CoV-2 household transmission. Univariable analysis was first performed with all measures and only those variables significant at $p < 0.1$ could be selected in the following multivariable logistic regression analysis. Backward elimination was performed to establish a final model retaining those with $p < 0.05$ in the model. Statistical analyses were performed using SAS software (V.9.4).

Ethics statement

As our study was embedded within the COVID-19 prevention and control practice within public health units, and the telephone interview was a supplementary survey of the epidemiological field investigation, ethics approval was not required. We obtained subjects' verbal informed consent before the start of the interviews.

Patient and public involvement

No patients or the public were involved in the study design, setting the research questions, interpretation or writing up of results, or reporting of the research.

RESULTS

As of 21 February 2020, 399 confirmed COVID-19 cases in 181 families were reported in Beijing. Four family clusters were excluded because we were unable to determine whether there was secondary transmission or co-exposure, leaving 177 families. After reviewing information in the epidemiological investigation reports and survey calls, 40 families were excluded as they did not meet the study inclusion criteria. A further 13 families declined to be interviewed and were also excluded, leaving 124 families for study (figure 1).

Over the 2 weeks of follow-up from onset of the primary case, secondary transmission occurred in 41/124 families (77 secondary cases), and 83/124 families had no secondary transmission. The overall secondary attack rate in families was 23.0% (77/335). In the secondary transmission group, 41 primary cases caused 77 secondary cases, with a median secondary case number in families of 2 (IQR 1–2). In the secondary transmission group, the secondary attack rate in children <18 years of age was 36.1% (13/36), compared with 69.6% (64/92) in adults, and the difference between these two age groups was significant ($\chi^2=12.08$, $p < 0.001$). The median age of the 13 secondary child cases was 3 years (IQR 2–6), 12/13 were

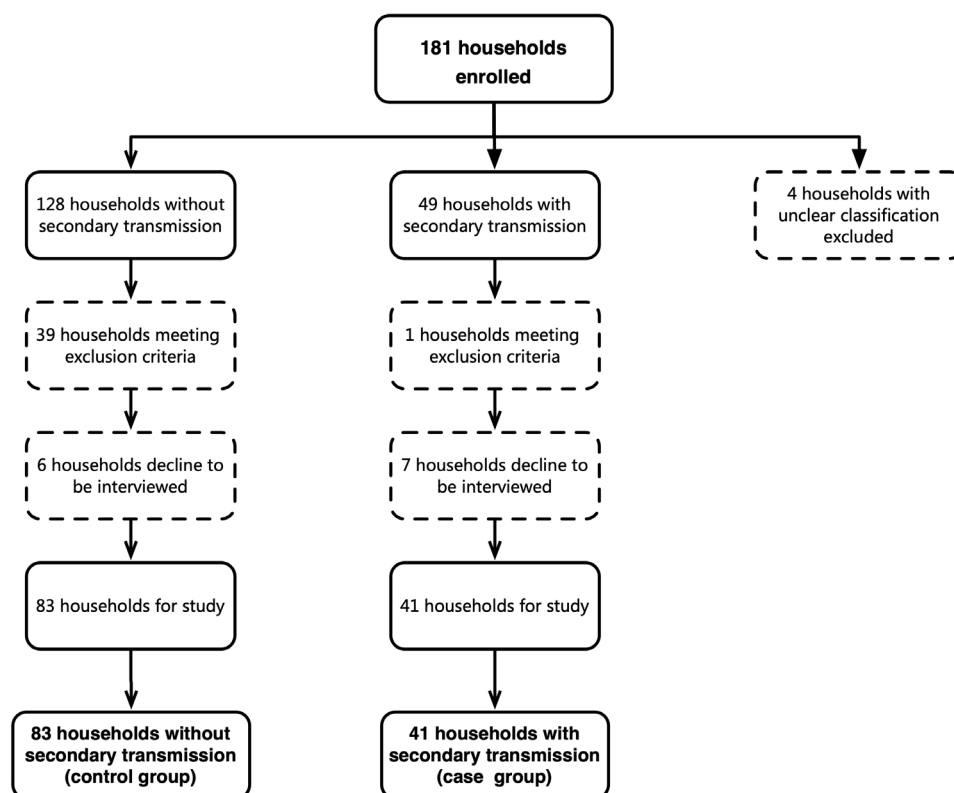


Figure 1 Selection and inclusion of interviewing subjects. Summary of household enrolment, and inclusion and interview response in the analysis of SARS-CoV-2 household transmission in Beijing, China.

Table 1 Characteristics of primary cases of COVID-19: univariable analysis

Primary cases	Total (n (%)) (n=124)	Families without transmission (n (%)) (n=83)	Families with transmission (n (%)) (n=41)	P value	Unadjusted OR (95% CI)
Age (years) (median (IQR))	45.0 (35.7–60.0)	42.0 (34.0–57.5)	52.0 (39.3–61.0)	–	–
<18	0	0	0	–	–
18–59	92 (74.2)	63 (75.9)	29 (70.7)	–	Ref
≥60	32 (25.8)	20 (24.1)	12 (29.3)	0.54	1.30 (0.56 to 3.02)
Sex	–	–	–	–	–
Men	61 (49.2)	40 (48.2)	21 (51.2)	–	Ref
Women	63 (50.8)	43 (51.8)	20 (48.8)	0.75	0.89 (0.42 to 1.87)
Education level	–	–	–	–	–
High school or lower	26 (21.0)	18 (21.7)	8 (19.5)	–	Ref
Bachelor degree	69 (55.6)	47 (56.6)	22 (53.7)	0.53	0.75 (0.30 to 1.86)
Graduate degree	29 (23.4)	18 (21.7)	11 (26.8)	0.65	0.77 (0.25 to 2.38)
Clinical severity	–	–	–	–	–
Mild	96 (77.4)	63 (75.9)	33 (80.4)	–	Ref
Severe	20 (16.1)	16 (19.3)	4 (9.8)	0.22	0.48 (0.15 to 1.54)
Critical	8 (6.5)	4 (4.8)	4 (9.8)	0.38	1.91 (0.45 to 8.13)
Fever (≥37.3°C)	–	–	–	–	–
No	18 (14.5)	9 (10.8)	9 (22.0)	–	Ref
Yes	106 (85.5)	74 (89.2)	32 (78.0)	0.11	0.43 (0.16 to 1.19)
Cough*	–	–	–	–	–
No	66 (53.2)	45 (54.2)	21 (51.2)	–	Ref
Yes	58 (46.8)	38 (45.8)	20 (48.8)	0.75	1.13 (0.53 to 2.39)
Diarrhoea†	–	–	–	–	–
No	109 (87.9)	76 (91.6)	33 (80.5)	–	Ref
Yes	15 (12.1)	7 (8.4)	8 (19.5)	0.08	2.63 (0.88 to 7.85)
Comorbidity	–	–	–	–	–
No	103 (83.1)	72 (86.7)	31 (75.6)	–	Ref
Yes	21 (16.9)	11 (13.3)	10 (24.4)	0.13	2.11 (0.81 to 5.48)
Time interval from illness onset to first hospital visit (days) (median (IQR))‡	3.0 (1.0–7.0)	3.0 (1.0–7.0)	4.0 (2.0–7.0)	–	–
≤2	47 (37.9)	35 (42.2)	12 (29.3)	–	Ref
>2	77 (62.1)	48 (57.8)	29 (70.7)	0.17	1.76 (0.79 to 3.93)
Time interval from illness onset to medical isolation (days) (median (IQR))	5.0 (2.0–7.0)	5.0 (2.0–7.0)	5.0 (3.0–9.0)	–	–
≤2	32 (25.8)	26 (31.3)	6 (14.6)	–	Ref
>2	92 (74.2)	57 (68.7)	35 (85.4)	0.05	2.66 (1.00 to 7.12)
Time interval from illness onset to laboratory confirmation (days) (median (IQR))	7.0 (4.7–10.2)	7.0 (4.4–9.9)	8.0 (5.6–12.9)	–	–
≤3	16 (12.9)	13 (15.7)	3 (7.3)	–	Ref
>3	108 (87.1)	70 (84.3)	38 (92.7)	0.20	2.35 (0.63 to 8.77)
Knowledge score on COVID-19 before illness onset (14 in total) (median (IQR))§	5 (0–9)	5 (0–9)	5 (0–10)	–	–
≥10	31 (25.0)	18 (21.7)	13 (31.7)	–	Ref
3–9	45 (36.3)	32 (38.6)	13 (31.7)	0.24	0.56 (0.22 to 1.47)
≤2	48 (38.7)	33 (39.7)	15 (36.6)	0.33	0.63 (0.25 to 1.61)
Self-awareness of being infected with SARS-CoV-2 when developed illness	–	–	–	–	–
Likely	45 (36.3)	35 (42.2)	10 (24.4)	–	Ref

Continued

Table 1 Continued

Primary cases	Total (n (%)) (n=124)	Families without transmission (n (%)) (n=83)	Families with transmission (n (%)) (n=41)	P value	Unadjusted OR (95% CI)
Unlikely	79 (63.7)	48 (57.8)	31 (75.6)	0.06	2.26 (0.98 to 5.21)
Knowledge of their own infectiousness after illness onset	–	–	–	–	–
Likely	84 (67.7)	62 (74.7)	22 (53.7)	–	Ref
Unlikely	40 (32.3)	21 (25.3)	19 (46.3)	0.02	2.55 (1.16 to 5.61)
Wear mask at home after illness onset†‡	–	–	–	–	–
Never	41 (33.1)	24 (28.9)	17 (41.5)	–	Ref
Sometimes	37 (29.8)	21 (25.3)	16 (39.0)	0.76	1.15 (0.46 to 2.87)
All the time	46 (37.1)	38 (45.8)	8 (19.5)	0.02	0.30 (0.11 to 0.82)
Self-isolated after illness onset	–	–	–	–	–
Yes	79 (63.7)	58 (69.9)	21 (51.2)	–	Ref
No	45 (36.3)	25 (30.1)	20 (48.8)	0.05	2.17 (1.00 to 4.70)
Eat separately at home after illness onset	–	–	–	–	–
Yes	70 (56.5)	54 (65.1)	16 (39.0)	–	Ref
No	54 (43.5)	29 (34.9)	25 (61.0)	0.008	2.86 (1.32 to 6.19)
Eat with separate tableware	–	–	–	–	–
Yes	81 (65.3)	58 (69.9)	23 (56.1)	–	Ref
No	43 (34.7)	25 (30.1)	18 (43.9)	0.14	1.78 (0.82 to 3.88)
Score on hand hygiene (8 in total) (with 11 missing values) (median (IQR))	8 (7–8)	8 (7–8)	7 (6–8)	–	–
≥6	103 (91.2)	68 (93.2)	35 (87.5)	–	Ref
4–5	7 (6.2)	4 (5.5)	3 (7.5)	0.63	1.46 (0.31 to 6.88)
≤3	3 (2.6)	1 (1.3)	2 (5.0)	0.28	3.88 (0.34 to 44.29)

*Primary case ever had the symptom of cough when living with others at home.

†Primary case ever had the symptom of diarrhoea (change of character of stool) when living with others at home.

‡Date on which cases self-reported the appearance of either fever ($\geq 37.3^{\circ}\text{C}$) or any respiratory symptom during epidemiological investigation. Date of hospital visit was the earliest date that cases sought medical service for COVID-19 related illness.

§A composite variable involving the primary case's knowledge on the infectivity of SARS-CoV-2, contagious population, transmission route, susceptible population, incubation period, common symptoms and preventive measures.

¶Refers to the primary case or family members wearing a face mask at home, regardless of whether it was a N95 mask, disposable surgical mask or a common mask, including cloth mask. Wearing masks all the time means the primary case wears a mask all the time except when having dinner or sleeping at home.

**A composite variable involving the primary case's hand washing practice, including using running water, washing frequency, using sanitiser and under what conditions.

mild and 1/13 was asymptomatic. Of 64 secondary adult cases, 82.8% (53/64) were mild, 10.9% (7/64) were severe, 1.6% (1/64) was critical and 4.7% (3/64) were asymptomatic. No statistically significant difference was observed in clinical severity between 41 index adult cases (table 1) and 64 secondary adult cases for the secondary transmission group ($p=0.18$).

The univariable analysis for association with secondary transmission of SARS-CoV-2 within families is shown in tables 1–3. Significant associations were:

1. Characteristics, behaviours and knowledge of the primary case: having diarrhoea, interval from illness onset to medical isolation >2 days, self-awareness of being infected with SARS-CoV-2 when the primary case developed the illness, lack of knowledge of their own infectiousness, mask wearing in the home after illness

onset, failing to self-isolate and not eating separately were associated with transmission (table 1).

2. Behaviours of family members: having daily close contact with the primary case at home, and number of family members wearing a mask in the home before and after the primary case's illness onset date were associated with transmission (table 2).
3. Household practices: frequency of using chlorine or ethanol based disinfectant for household cleaning and household ventilation duration were protective (table 3).

In multivariable logistic regression model, four factors remained significantly associated with secondary transmission. The primary case having diarrhoea in the home and daily close contact with the primary case in the home increased the risk. Transmission was significantly reduced

Table 2 Characteristics of well family members: univariable analysis

Family members	Total (n (%)) (n=121)	Families without transmission (n (%)) (n=81)	Families with transmission (n (%)) (n=40)	P value	Unadjusted OR (95% CI)
Family size (median (IQR))	4 (3–5)	3 (3–5)	4 (3–6)	–	–
≤3	56 (46.3)	41 (50.6)	15 (37.5)	–	Ref
>3	65 (53.7)	40 (49.4)	25 (62.5)	0.18	1.71 (0.79 to 3.71)
Close contact with primary cases at home (within 1 m or 3 feet) (No of times)*	–	–	–	–	–
0	41 (33.9)	36 (44.4)	5 (12.5)	–	Ref
1–3	61 (50.4)	38 (46.9)	23 (57.5)	0.005	4.55 (1.57 to 13.20)
≥4	19 (15.7)	7 (8.7)	12 (30.0)	<0.001	12.34 (3.30 to 46.23)
No of family members wearing mask at home before primary case's illness onset date (median (IQR))†	0 (0–1)	0 (0–2)	0 (0–0)	–	–
None	90 (74.4)	54 (66.7)	36 (90.0)	–	Ref
One or more	31 (25.6)	27 (33.3)	4 (10.0)	0.009	0.22 (0.07 to 0.69)
No of family members wearing mask at home after primary case's illness onset date (median (IQR))‡	1 (0–3)	2 (0–3)	0 (0–3)	–	–
None	47 (38.8)	26 (32.1)	21 (52.5)	–	Ref
Some	38 (31.4)	24 (29.6)	14 (35.0)	0.47	0.72 (0.30 to 1.73)
All	36 (29.8)	31 (38.3)	5 (12.5)	0.004	0.20 (0.07 to 0.60)

*Family members stay with the primary case at a short distance (within 1 m or 3 feet) for more than 10 min at a time. For example, they have dinner with the primary case around a table or watch TV sitting near.

†Before the primary case developed the illness, the primary case or his/her family contacts wear masks all the time at home.

‡When the primary case developed the illness, the primary case's family contacts wear masks all the time living with the primary case at home.

by frequent use of chlorine or ethanol based disinfectant in households and family members (including the primary case) wearing a mask at home before the primary case developed the illness (table 4).

DISCUSSION

This study confirms that the highest risk of household transmission is prior to symptom onset, but that precautionary NPIs, such as mask use, disinfection and social distancing in households can prevent COVID-19 transmission during the pandemic. This study is the first to confirm the effectiveness of mask use prior to symptom onset by family members, daily household disinfection and social distancing in the home. This could inform precautionary guidelines for families to reduce intrafamilial transmission in areas where there is high community transmission or other risk factors for COVID-19. Household transmission is a major driver of epidemic growth.^{5 6} Further, in countries where health system capacity is exhausted, many people with infection are required to self-isolate at home, where their household contacts will be at risk of infection. In our study, the median family size of the 124 families was 4 (range 2–9), usually with children, parents and grandparents, which is similar to the social structure of most Chinese families.⁹ Therefore, the risk of SARS-CoV-2 household transmission is high if a primary case was introduced and no measure was adopted. We showed that NPIs are effective at preventing transmission, even in homes that are

crowded and small. UFMU is a low risk intervention with potential public health benefits.^{3 4} The results suggest that community face mask use is likely to be the most effective inside the household during severe epidemics.

Almost a quarter of family members became infected, and the findings suggest that the risk was highest either before symptom onset or early in the clinical illness, as most primary cases were hospitalised after diagnosis, and interventions were not effective if applied after symptom onset. In the univariate analysis, wearing a mask after illness onset was significant, but in multivariate analysis, only wearing it before symptom onset was effective. Viral load is highest in the 2 days before symptom onset and on the first day of symptoms, and up to 44% of transmission is during the pre-symptomatic period in settings with substantial household clustering.^{10 11} This supports UFMU, probably by reducing onward transmission from people in the pre-symptomatic phase of the illness^{12 13} as well as protecting well mask users. Randomised clinical trials of face masks in the household have confirmed protection against other respiratory viruses if compliant, if used within 36 hours of the primary case symptom onset, and alone or in combination with hand hygiene.^{14 15} This study now provides specific evidence for UFMU in settings of high epidemic growth to protect against COVID-19. In our study, 91.2% (103/113) of primary cases had a high score on hand hygiene, but it was not effective, confirming the results of previous randomised clinical trials which showed hand

Table 3 Characteristics of the residence and household practices: univariable analysis between two family groups

Residence and household practices	Total (n (%)) (n=121)	Families without transmission (n (%)) (n=81)	Families with transmission (n (%)) (n=40)	P value	Unadjusted OR (95% CI)
Residential area per capita (m ²) (median (IQR))	25.0 (17.3–35.0)	28.0 (18.0–35.8)	20.0 (16.9–31.8)	–	–
≤20	50 (41.3)	30 (37.1)	20 (50.0)	–	Ref
20–40	49 (40.5)	36 (44.4)	13 (32.5)	0.16	0.54 (0.23 to 1.27)
≥40	22 (18.2)	15 (18.5)	7 (17.5)	0.51	0.70 (0.24 to 2.02)
No of bedrooms per person (median (IQR))	0.7 (0.5–1.0)	0.7 (0.5–1.0)	0.7 (0.5–1.0)	–	–
≥1	39 (32.2)	28 (34.6)	11 (27.5)	–	Ref
<1	82 (67.8)	53 (65.4)	29 (72.5)	0.49	1.34 (0.59 to 3.08)
No of washrooms (median (IQR))	1 (1–2)	1 (1–2)	1 (1–2)	–	–
2 or more	34 (28.1)	23 (28.4)	11 (27.5)	–	Ref
1	87 (71.9)	58 (71.6)	29 (72.5)	0.87	1.07 (0.46 to 2.49)
Frequency of room cleaning (wet type)	–	–	–	–	–
Once in 1–2 days	83 (68.6)	59 (72.8)	24 (60.0)	–	Ref
Once in >2 days	38 (31.4)	22 (27.2)	16 (40.0)	0.11	1.90 (0.86 to 4.19)
Frequency of chlorine or ethanol based disinfectant use for house cleaning*	–	–	–	–	–
Once in 2 or more days	86 (71.1)	50 (61.7)	36 (90.0)	–	Ref
Once a day or more	35 (28.9)	31 (38.3)	4 (10.0)	0.003	0.18 (0.06 to 0.55)
Ventilation duration per day (hours) (median (IQR))†	2.0 (1.0–6.0)	3.0 (1.5–8.0)	1.8 (1.0–4.0)	–	–
>1	85 (70.2)	62 (76.5)	23 (57.5)	–	Ref
≤1	36 (29.8)	19 (23.5)	17 (42.5)	0.02	2.55 (1.14 to 5.70)

*When cleaning the house, disinfectant which contains chlorine or ethanol is used to disinfect the floor, door and window handles, indoor air, tables and toilets.

†Ventilation means the practice of opening the window to allow convection of indoor air.

Table 4 Risk factors for SARS-CoV-2 household transmission: multivariable analysis

Risk factor	Adjusted OR	95% CI	P value
Primary case has diarrhoea	–	–	–
No	–	–	Ref
Yes	4.10	(1.08 to 15.60)	0.04
Close contact at home with primary cases (within 1 m or 3 feet) (times)	–	–	–
0	–	–	Ref
1–3	3.30	(1.05 to 10.40)	0.04
≥4	18.26	(3.93 to 84.79)	< 0.001
No of family members (including primary case) wearing a mask at home before the primary case's illness onset date	–	–	–
None	–	–	Ref
1 or more	0.21	(0.06 to 0.79)	0.02
Frequency of chlorine or ethanol based disinfectant use for house cleaning	–	–	–
Once in 2 or more days	–	–	Ref
Once a day or more	0.23	(0.07 to 0.84)	0.03

hygiene alone did not protect against respiratory transmissible viruses, but masks combined with hand hygiene did have effect.¹⁶

As the compliance of UFMU would be poor in the home, there was difficulty and also no necessity for everyone to wear masks at home. We recommended that those families with members who were at risk of getting infected with SARS-CoV-2 (such as ever having contact with a COVID-19 patient, medical workers caring for a COVID-19 patient or having a history of travelling to high risk areas) should apply UFMU to reduce the risk of household transmission.

This study showed that social distancing within the home is effective and having close contact (within 1 m or 3 feet, such as eating around a table or sitting together watching TV) is a risk factor for transmission. The study also provides evidence of effectiveness of chlorine or ethanol based household disinfection in areas with high community transmission, or where one family member is a health worker, or where there is a risk of COVID-19, such as during home quarantine, consistent with advice provided by local health authorities or organisations.¹⁷ Diarrhoea as a symptom in the primary case is also a risk factor for SARS-CoV-2 transmission within families, which highlights the importance of disinfection of the bathroom and toilet, as well as closing the toilet lid when flushing to prevent aerosolisation of the virus.

Our study has limitations. Telephone interview has inherent limitations, including recall bias. It would take about 20 min to complete an interview, and 95% (118/124) of interviews were rated as informative by the interviewers. The evaluation results of mask wearing were reliable, but we did not collect data on the concentration of disinfectant used by families. The strengths of the study were that we had complete follow-up data and were able to accurately ascertain the incidence of secondary transmission in the cohort.

CONCLUSIONS

Household transmission in the pre-symptomatic or early symptomatic period of COVID-19 is a driver of epidemic growth and any measure aimed at reducing this can flatten the curve. This study reinforces the high risk of transmission in households but importantly shows that UFMU and hygiene measures can significantly reduce the risk of household transmission of COVID-19, independent of household size or crowding. This is the first study to show the effectiveness of precautionary mask use, social distancing and regular disinfection in the household, and can inform guidelines for prevention of household transmission. The results may also be informative for families of high risk groups, such as health workers, quarantined individuals or situations where cases of COVID-19 have to be managed at home.

Author affiliations

¹Institute for Infectious Disease and Endemic Disease Control, Beijing Center for Disease Prevention and Control, Beijing Research Center for Preventive medicine, Beijing, China

²State Key Laboratory of Remote Sensing Science, College of Global Change and Earth System Science, Beijing Normal University, Beijing, China

³Office of Beijing Center for Global Health, Beijing Center for Disease Prevention and Control, Beijing Research Center for Preventive medicine, Beijing, China

⁴Institute for nutrition and food hygiene, Beijing Center for Disease Prevention and Control, Beijing Research Center for Preventive medicine, Beijing, China

⁵Department of Environmental and Occupational Health, School of Public Health, University of Nevada, Las Vegas, Nevada, USA

⁶Arizona State University College of Health Solutions, Phoenix, Arizona, USA

⁷Kirby institute, Faculty of Medicine, the University of New South Wales, Sydney, New South Wales, Australia

Acknowledgements We thank the staff members in the district and municipal Centres for Disease Prevention and Control, and medical settings in Beijing for conducting field investigation, specimen collection, laboratory detection and case reporting. We also thank all patients and families involved in the study.

Contributors All authors approved the final draft of the manuscript. The corresponding authors attest that all listed authors meet authorship criteria and that no others meeting the criteria have been omitted.

Funding This work was supported by Beijing Science and Technology Planning Project (Z201100005420010).

Competing interests None declared.

Patient and public involvement Patients and/or the public were not involved in the design, or conduct, or reporting, or dissemination plans of this research.

Patient consent for publication Not required.

Provenance and peer review Not commissioned; externally peer reviewed.

Data availability statement No additional data available.

Open access This is an open access article distributed in accordance with the Creative Commons Attribution Non Commercial (CC BY-NC 4.0) license, which permits others to distribute, remix, adapt, build upon this work non-commercially, and license their derivative works on different terms, provided the original work is properly cited, appropriate credit is given, any changes made indicated, and the use is non-commercial. See: <http://creativecommons.org/licenses/by-nc/4.0/>.

REFERENCES

- 1 Tian H, Liu Y, Li Y, *et al*. An investigation of transmission control measures during the first 50 days of the COVID-19 epidemic in China. *Science* 2020;368:638–42.
- 2 Centers for Disease Control and Prevention. Recommendation regarding the use of cloth face coverings, especially in areas of significant community-based transmission. Available: <https://www.cdc.gov/coronavirus/2019-ncov/prevent-getting-sick/cloth-face-cover.html> [Accessed 15 Apr 2020].
- 3 Greenhalgh T, Schmid MB, Czypionka T, *et al*. Face masks for the public during the covid-19 crisis. *BMJ* 2020;369:m1435.
- 4 Javid B, Weekes MP, Matheso NJ. Covid-19: should the public wear face masks? Yes—population benefits are plausible and harms unlikely. *BMJ* 2020;369:m1442.
- 5 World Health Organization. Report of the WHO-China joint mission on coronavirus disease 2019 (COVID-19), 2020. Available: https://www.who.int/docs/default-source/coronaviruse/who-china-joint-mission-on-covid-19-final-report-1100hr-28feb2020-11mar-update.pdf?sfvrsn=1a13fda0_2 [Accessed 15 Apr 2020].
- 6 Yang HY, Xu J, Li Y, *et al*. [The preliminary analysis on the characteristics of the cluster for the COVID-19]. *Zhonghua Liu Xing Bing Xue Za Zhi* 2020;41:623–8.
- 7 National Health Commission. New coronavirus pneumonia prevention and control program (5th edition) (in Chinese). Available: <http://www.nhc.gov.cn/jkj/s3577/202002/a5d6f7b8c48c451c87dba14889b30147.shtml> [Accessed 15 Apr 2020].
- 8 Zhang YP, The Novel Coronavirus Pneumonia Emergency Response Epidemiology Team. The epidemiological characteristics of an outbreak of 2019 novel coronavirus diseases (COVID-19) — China, 2020. *China CDC Weekly* 2020;2:11322.

- 9 National Bureau of Statistics. China statistical Yearbook-2019 (in Chinese). Available: <http://www.stats.gov.cn/tjsj/ndsj/2019/indexch.htm> [Accessed 3 May 2020].
- 10 Wölfel R, Corman VM, Guggemos W, *et al*. Virological assessment of hospitalized patients with COVID-2019. *Nature* 2020. doi:10.1038/s41586-020-2196-x. [Epub ahead of print: 01 Apr 2020].
- 11 He X, Lau EHY, Wu P, *et al*. Temporal dynamics in viral shedding and transmissibility of COVID-19. *Nat Med* 2020;26:672–5.
- 12 Tong Z-D, Tang A, Li K-F, *et al*. Potential presymptomatic transmission of SARS-CoV-2, Zhejiang Province, China, 2020. *Emerg Infect Dis* 2020;26:1052–4.
- 13 Bai Y, Yao L, Wei T, *et al*. Presumed asymptomatic carrier transmission of COVID-19. *JAMA* 2020. doi:10.1001/jama.2020.2565. [Epub ahead of print: 21 Feb 2020].
- 14 MacIntyre CR, Cauchemez S, Dwyer DE, *et al*. Face mask use and control of respiratory virus transmission in households. *Emerg Infect Dis* 2009;15:233–41.
- 15 Cowling BJ, Chan K-H, Fang VJ, *et al*. Facemasks and hand hygiene to prevent influenza transmission in households: a cluster randomized trial. *Ann Intern Med* 2009;151:437–46.
- 16 Wong VWY, Cowling BJ, Aiello AE. Hand hygiene and risk of influenza virus infections in the community: a systematic review and meta-analysis. *Epidemiol Infect* 2014;142:922–32.
- 17 Centers for Disease Control and Prevention. Cleaning and disinfection for households: interim recommendations for U.S. households with suspected or confirmed coronavirus disease 2019 (COVID-19). Available: https://www.cdc.gov/coronavirus/2019-ncov/prevent-getting-sick/cleaning-disinfection.html?CDC_AA_refVal=https%3A%2F%2Fwww.cdc.gov%2Fcoronavirus%2F2019-ncov%2Fprepare%2Fcleaning-disinfection.html [Accessed 15 Apr 2020].

This press release draws on the manuscript accepted for publication. The final edited version will be posted online on the journal's homepage in due course.

Wearing face masks at home might help ward off COVID-19 spread among family members

79% effective at curbing transmission--but only before symptoms emerge

Wearing face masks at home might help ward off the spread of COVID-19 infection among family members living in the same household, but only before symptoms develop, suggests a study of Chinese families in Beijing, accepted for publication in ***BMJ Global Health***.

This practice was 79% effective at curbing transmission before symptoms emerged in the first person infected, but it wasn't protective once symptoms had developed, the study shows.

The figures in China suggest that most of the person to person transmission of SARS-CoV-2, the coronavirus responsible for COVID-19 infection, has occurred in families. But it's not clear if the wearing of face masks might help curb household transmission rates, along with social distancing and disinfection.

The World Health Organization (WHO) and Public Health England haven't endorsed the wearing of face masks indoors or outdoors, on the grounds that there's little good quality evidence to warrant recommending this.

To explore whether face masks might make a difference, the researchers questioned 460 people from 124 families in Beijing, China, on their household hygiene and behaviours during the pandemic.

Each family had at least one laboratory confirmed case of COVID-19 infection between late February and late March 2020. Average family size was 4, but ranged from 2 to 9, and usually comprised three generations.

Family members were defined as those who had lived with the infected person for 4 days before and more than 24 hours after that person's symptoms first appeared.

The researchers wanted to know what factors might heighten or lessen the risk of subsequently catching the virus within the incubation period--14 days from the start of that person's symptoms.

During this time, secondary transmission--spread from the first infected person to other family members--occurred in 41 out of the 124 families. A total of 77 adults and children were infected in this way, giving an 'attack rate' of 23% or around 1 in 4.

Around a third of the study children caught the virus (36%; 13 out of 36) compared with more than two thirds of the adults (just over 69.5%; 64 out of 92).

Twelve of the children had mild symptoms; one had none. Most (83%) of the adults had mild symptoms; in around 1 in 10, symptoms were severe, and one person became critically ill.

Daily use of disinfectants, window opening, and keeping at least 1 metre apart were associated with a lower risk of passing on the virus, even in more crowded households.

But daily contact and the number of family members wearing a face mask after the start of symptoms in the first person to develop them were associated with a heightened risk.

Of all the behavioural and hygiene factors, four were significantly associated with secondary transmission of the virus.

Diarrhoea in the first person to become infected and close daily contact with them increased the risk of passing on the virus: diarrhoea was associated with a quadrupling in risk, while close daily contact, such as eating meals round a table or watching TV together, was associated with an 18-fold increased risk.

Frequent use of bleach or disinfectants for household cleaning and the wearing of a face mask at home before symptoms emerged, including by the first person to have them, were associated with a reduced risk of viral transmission.

A face mask worn before symptoms started was 79% effective, and disinfection 77% effective, at stopping the virus from being passed on.

The authors acknowledge some limitations to their study: telephone interviews are subject to recall and the strength of household disinfectants and bleach used wasn't recorded.

Nevertheless, they suggest the findings back universal face mask use, not just in public spaces, but also at home. And the findings may also be relevant for families living with someone in quarantine or in enforced social isolation, and for the families of health workers who may face an ongoing risk of infection, they say.

"This study confirms the highest risk of household transmission being prior to symptom onset, but that precautionary [non-pharmaceutical interventions], such as mask use, disinfection and social distancing in households can prevent COVID-19 transmission during the pandemic," independent of household size or crowding, they write.

"Household transmission is a major driver of epidemic growth," they point out, adding that their findings could be used to "inform precautionary guidelines for families to reduce intrafamilial transmission in areas where there is high community transmission or other risk factors for COVID-19."