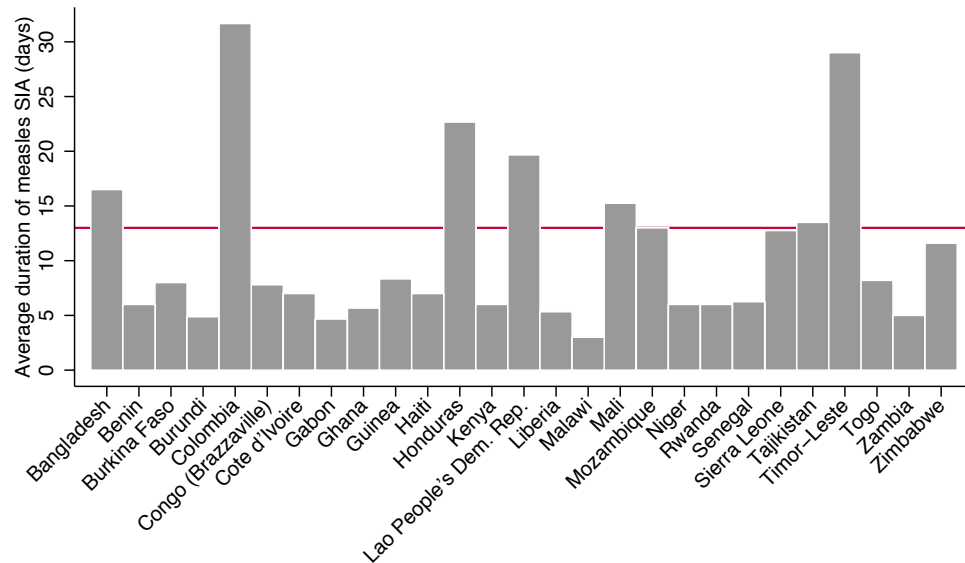
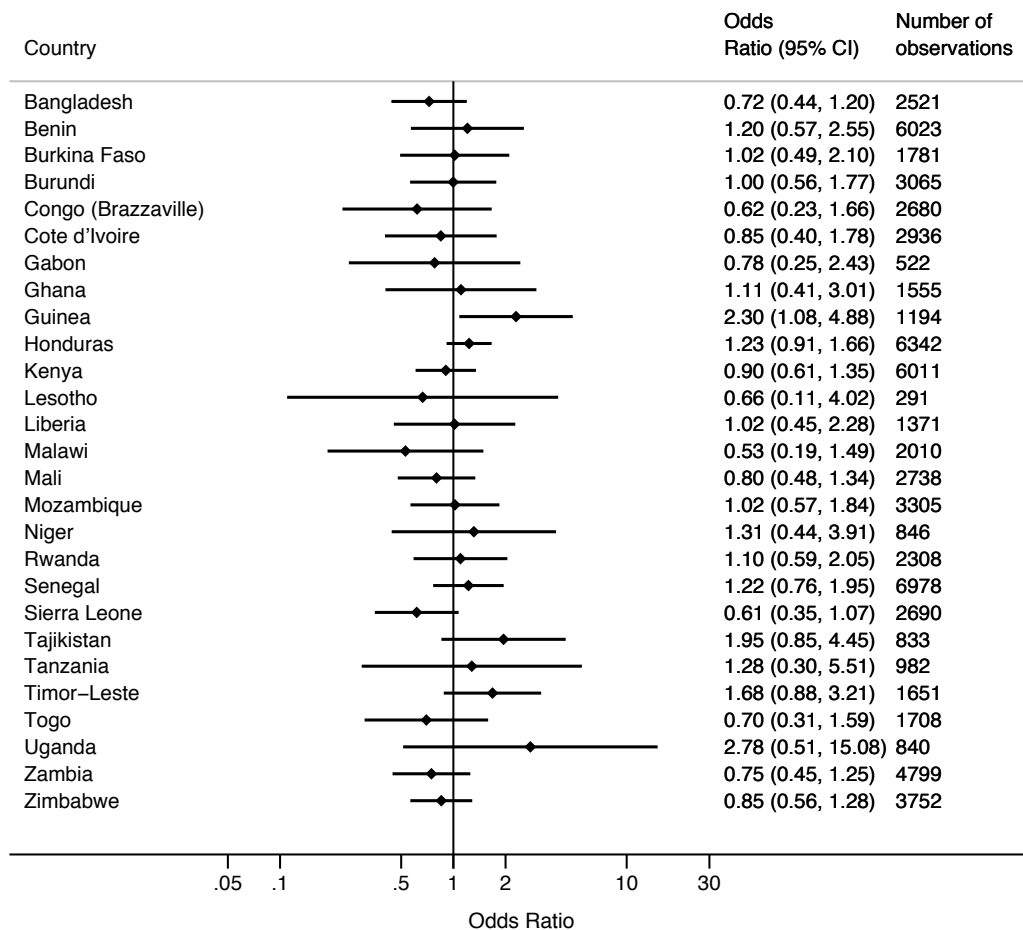


## Supplementary appendix



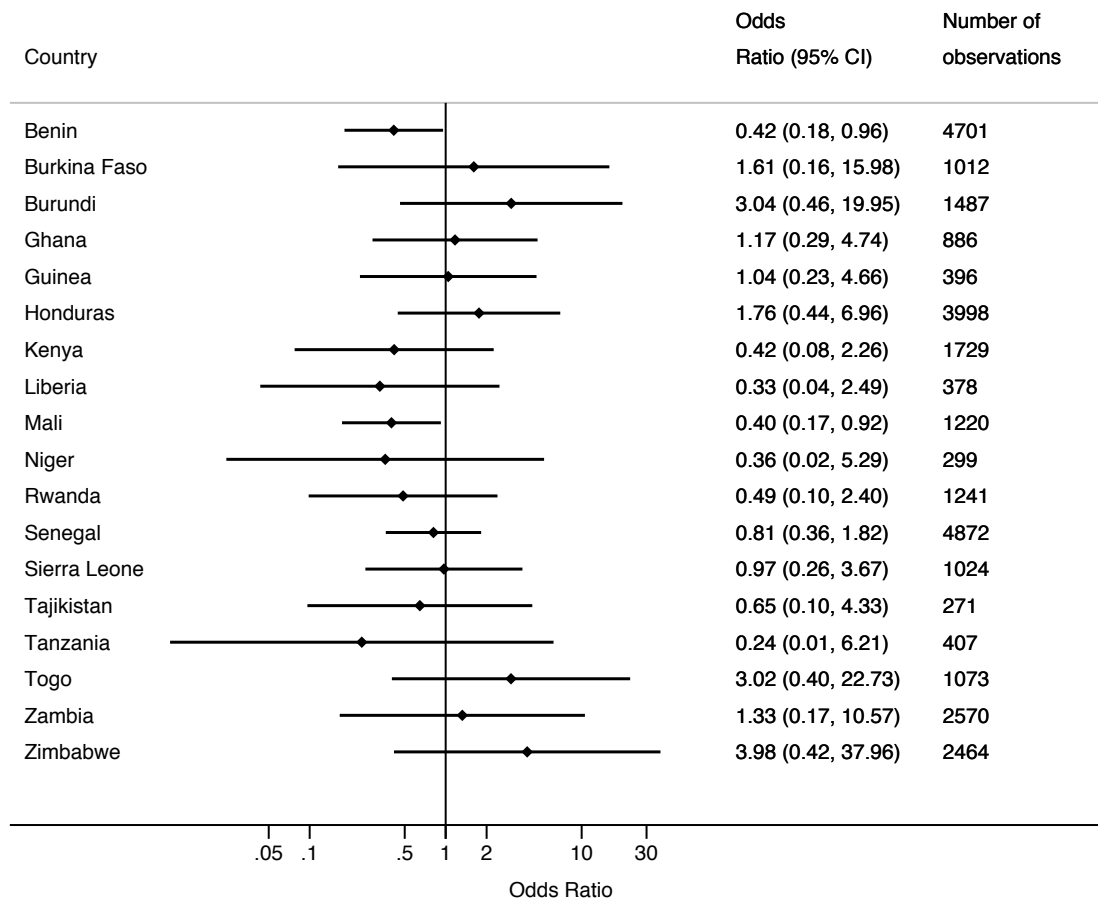
**Supplementary Appendix, Figure A1. Average duration of national measles supplementary immunization activities (SIAs) included in our sample**

Note: Average duration (red line) for the whole sample was 13 days and median duration was 6 days.



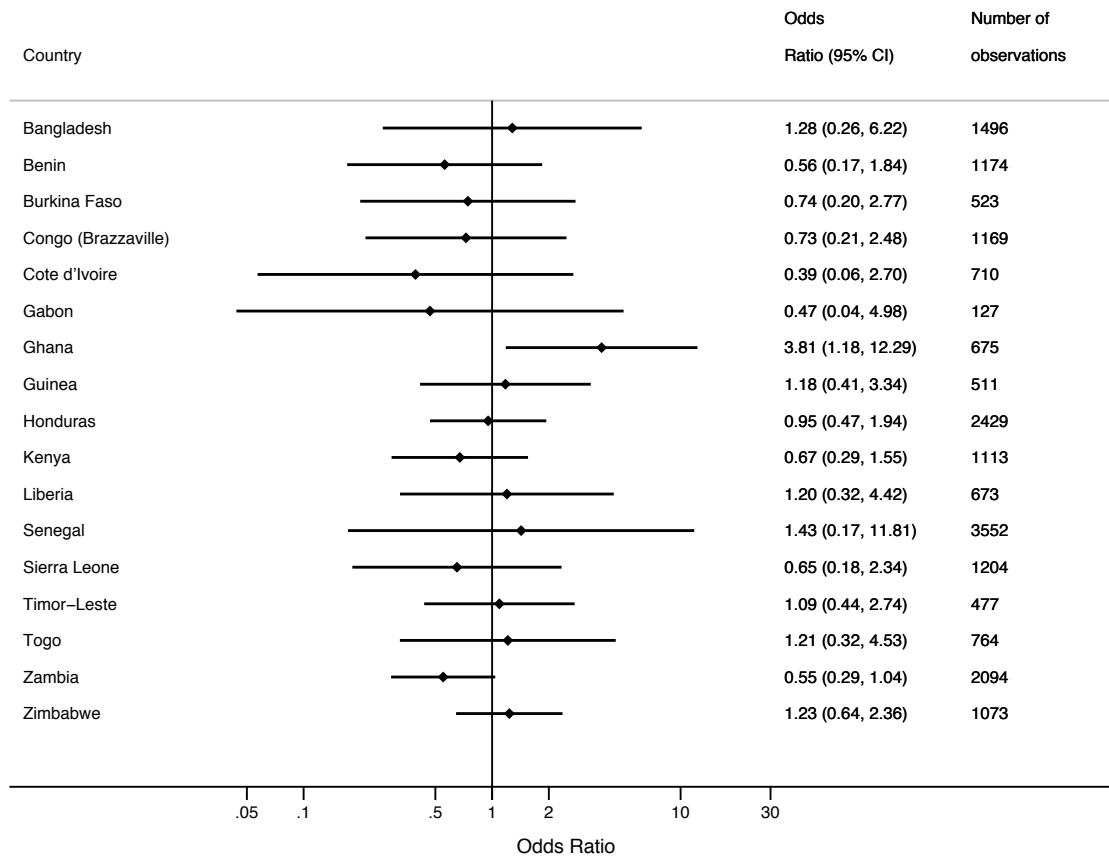
**Supplementary Appendix, Figure A2. Logistic regression results of the impact of measles supplementary immunization activities (SIAs) on facility delivery: country-specific analysis**

Notes: Odds ratios are presented for SIA dummy variable, which is equal to 1 if measles SIA was conducted on day of birth and 0 otherwise. The results are based on country-specific logistic regressions using the same set of covariates as the adjusted models in Table 5 in the main text. Significant results are observed for Guinea only.



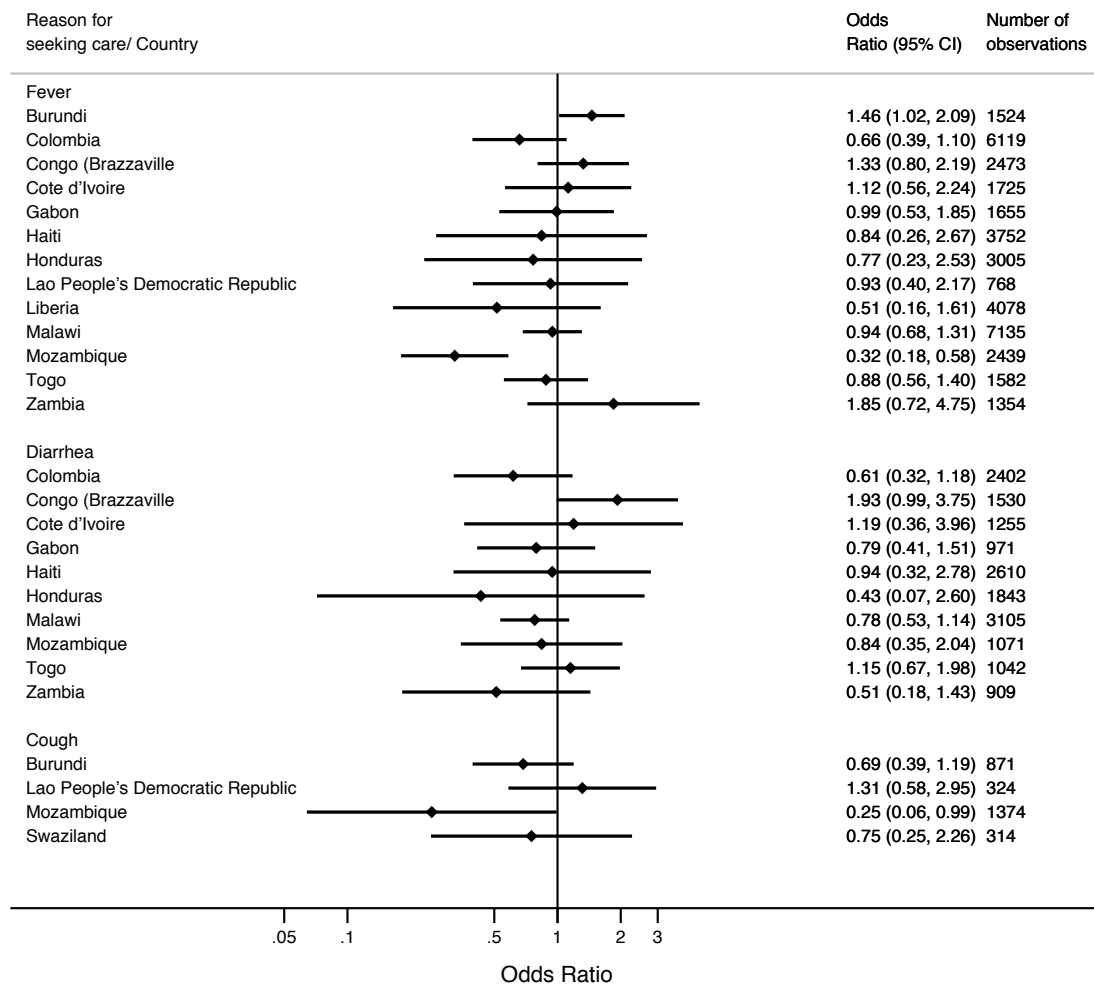
**Supplementary Appendix, Figure A3. Logistic regression results of the impact of measles supplementary immunization activities (SIAs) on whether the newborn was weighed at birth if delivered at a facility: country-specific analysis**

Notes: Odds ratios are presented for SIA dummy variable, which is equal to 1 if measles SIA was conducted on day of birth and 0 otherwise. The results are based on country-specific logistic regressions using the same set of covariates as the adjusted models in Table 5 in the main text. Significant results are observed for Benin and Mali only.



**Supplementary Appendix, Figure A4. Logistic regression results of the impact of measles supplementary immunization activities (SIAs) on whether the baby received a postnatal check within one week of birth: country-specific analysis**

Notes: Odds ratios are presented for SIA dummy variable, which is equal to 1 if measles SIA was conducted on day of birth and 0 otherwise. The results are based on country-specific logistic regressions using the same set of covariates as the adjusted models in Table 5 in the main text. Significant results are observed for Ghana only.



**Supplementary Appendix, Figure A5. Logistic regression results of the impact of measles supplementary immunization activities (SIAs) on care seeking for child fever, diarrhea, and cough: country-specific analysis**

Notes: Odds ratios are presented for SIA dummy variable, which is equal to 1 if measles SIA was conducted during the two-week time period preceding the date of interview and 0 otherwise. The results are based on country-specific logistic regressions using the same set of covariates as the adjusted models in Table 6 in the main text. Significant results are observed for Burundi and Mozambique only.

Supplementary Appendix, Table A1. Logistic regression results of the impact of measles supplementary immunization activities (SIAs) on care-seeking for child fever, diarrhea, and cough: pooled analysis of DHS and MICS data: sensitivity analysis

	Sensitivity analysis		
	Fever	Diarrhea	Cough
SIA	0.99 (0.839 - 1.167)	0.865 (0.636 - 1.176)	0.838 (0.572 - 1.228)
Urban	1.403** (1.272 - 1.547)	1.279** (1.104 - 1.481)	1.337 (0.886 - 2.016)
Child's age	0.938** (0.918 - 0.957)	0.939** (0.904 - 0.975)	0.915* (0.849 - 0.986)
No education		<i>ref.</i>	
Primary education	1.189** (1.079 - 1.310)	1.215* (1.027 - 1.437)	1.344 (0.962 - 1.877)
Secondary or higher education	1.440** (1.292 - 1.605)	1.353** (1.121 - 1.633)	1.254 (0.910 - 1.728)
1st wealth quintile (poorest)			
2nd wealth quintile	1.195** (1.090 - 1.310)	1.164* (1.010 - 1.342)	0.713 (0.503 - 1.011)
3rd wealth quintile	1.345** (1.208 - 1.497)	1.169 (0.983 - 1.389)	0.903 (0.635 - 1.284)
4th wealth quintile	1.327** (1.170 - 1.507)	1.291* (1.047 - 1.594)	1.091 (0.762 - 1.564)
5th wealth quintile (richest)	1.425** (1.222 - 1.661)	1.258 (0.973 - 1.625)	1.057 (0.684 - 1.632)
Observations	19,927	8,299	1,509

Notes: Sample limited to countries with SIAs lasting for at least 7 days during the two-week time period. Binary dependent variable equal to 1 if the mother sought care at a facility if the child was ill in the two weeks prior to the survey with each symptom, 0 otherwise. Odds ratios and 95% CI in parentheses. \* indicates significant level of  $p < 0.05$ ; \*\* indicates significance level of  $p < 0.01$ .