


Effect of a home-based health, nutrition and responsive stimulation intervention and conditional cash transfers on child development and growth: a cluster-randomised controlled trial in Tanzania

Christopher R Sudfeld,^{1,2} Lilia Bliznashka ¹, Geoffrey Ashery,³ Aisha K Yousafzai,¹ Honorati Masanja³

To cite: Sudfeld CR, Bliznashka L, Ashery G, *et al*. Effect of a home-based health, nutrition and responsive stimulation intervention and conditional cash transfers on child development and growth: a cluster-randomised controlled trial in Tanzania. *BMJ Global Health* 2021;**6**:e005086. doi:10.1136/bmjgh-2021-005086

Handling editor Sanni Yaya

► Additional supplemental material is published online only. To view, please visit the journal online (<http://dx.doi.org/10.1136/bmjgh-2021-005086>).

Received 20 January 2021
Revised 22 March 2021
Accepted 5 April 2021



© Author(s) (or their employer(s)) 2021. Re-use permitted under CC BY. Published by BMJ.

¹Department of Global Health and Population, Harvard T. H. Chan School of Public Health, Boston, Massachusetts, USA

²Department of Nutrition, Harvard T. H. Chan School of Public Health, Boston, Massachusetts, USA

³Ifakara Health Institute, Dar es Salaam, Tanzania

Correspondence to

Dr. Christopher R Sudfeld; csudfeld@hsph.harvard.edu

ABSTRACT

Introduction Evidence on the effects of community health worker (CHW) interventions and conditional cash transfers (CCTs) on child growth and development in sub-Saharan Africa remains sparse.

Methods We conducted a single-blind, cluster-randomised controlled trial of an integrated home-visiting health, nutrition and responsive stimulation intervention alone and in combination with CCTs to promote antenatal and child clinic attendance from 2017 to 2019 in rural Morogoro Region, Tanzania. Pregnant women and caregivers with a child <1 year of age were enrolled. Twelve villages were randomised to either (1) CHW (n=200 participants), (2) CHW+CCT (n=200) or (3) control (n=193). An intention-to-treat analysis was conducted for the primary trial outcomes of child cognitive, language and motor development assessed with the Bayley Scales of Infant and Toddler Development and child length/height-for-age z-scores (HAZ) at 18 months of follow-up.

Results The CHW and CHW+CCT interventions had beneficial effects on child cognitive development as compared with control (standardised mean difference (SMD): 0.15, 95% CI 0.05 to 0.24, and SMD: 0.18, 95% CI 0.07 to 0.28, respectively). The CHW+CCT intervention also had positive effects on language (SMD: 0.08, 95% CI 0.01 to 0.15) and motor (SMD: 0.16, 95% CI 0.03 to 0.28) development. Both CHW and CHW+CCT interventions had no effect on HAZ in the primary analysis; however, there were statistically significant positive effects in multivariable analyses. The CHW+CCT group (mean difference: 3.0 visits, 95% CI 2.1 to 4.0) and the CHW group (mean difference: 1.5 visits, 95% CI 0.6 to 2.5) attended greater number of child health and growth monitoring clinic visits as compared to the control group.

Conclusion Integrated CHW home-visiting interventions can improve child cognitive development and may have positive effects on linear growth. Combining CHW with CCT may provide additional benefits on clinic visit attendance and selected child development outcomes.

Trial registration number ISRCTN10323949.

Key questions

What is already known?

- Community health worker interventions that integrate health, nutrition and responsive stimulation components can improve child development, but evidence from sub-Saharan Africa is limited.
- Conditional cash transfers can increase healthcare utilisation, but the effects on child development and growth remain unclear.

What are the new findings?

- An integrated home-visiting community health worker intervention benefited child cognitive development and may have improved child linear growth in rural Tanzania.
- Combining conditional cash transfers with the community health worker intervention increased child clinic visit attendance as intended and improved child cognitive, motor and language development and may have improved child linear growth as compared with control.

What do the new findings imply?

- Community health workers can improve child development and possibly child growth outcomes.
- Additional research is needed to determine the intensity and frequency of visits to optimise impact, as well as the direct and indirect mechanisms through which community health worker interventions work.
- Conditional cash transfers may provide additional benefits on clinic attendance and selected development domains as compared with community health workers alone.
- Additional research is needed to directly compare integrated supply-side and demand-side strategies to promote child growth and development.

INTRODUCTION

Community-based interventions that integrate health, nutrition and responsive stimulation components are a promising strategy

to improve child health, growth and development.¹⁻³ Home visit-based community health worker (CHW) interventions primarily focused on health can increase the rate of facility births and uptake of child immunisations, and reduce newborn morbidity and mortality.^{4 5} Trials integrating responsive stimulation components in CHW interventions in low-income and middle-income countries (LMICs) have also generally found positive effects on child development outcomes.⁶⁻¹¹ Nevertheless, evidence on the effect of integrated child health, nutrition and responsive stimulation interventions is limited, particularly in sub-Saharan Africa. In addition, data on the effects of CHW interventions on child growth outcomes are sparse.^{5 12}

While CHWs are a supply-side intervention, providing additional demand-side conditional cash transfer (CCT) interventions to promote healthcare utilisation has shown positive effects on maternal and child clinic visit attendance and child vaccination.¹³ However, evidence on the effect of CCTs on child nutrition, growth and development in LMICs is mixed, with the majority coming from Latin America.¹³⁻¹⁵ A recent meta-analysis showed that cash transfers have a small positive effect on height-for-age z-scores (HAZ) (difference HAZ: 0.03, 95% CI 0.00 to 0.05) and reduction of stunting (-2.1%, 95% CI -0.69% to 3.5%) among children under 5 years of age; however, there was no overall effect on weight-for-age z-scores (WAZ) and wasting.¹⁶ Further, a subgroup analysis found that the positive effects of cash transfers on HAZ were limited to studies in Asia and not studies in Latin America and sub-Saharan Africa, while the positive effects on WAZ were found in studies in sub-Saharan Africa but not in Asia and Latin America.¹⁶ In addition it was suggested that CCTs linked to a range of health, work and education conditions had stronger effects on stunting as compared with unconditional cash transfers (UCTs).¹⁶ Nevertheless, the targeted age groups, size of cash transfer, conditionalities and delivery platforms varied widely between studies in the meta-analysis, which makes the CCT and UCT evidence difficult to synthesise.

Cash transfers, with conditionality linked to parenting or educational programmes, have generally shown greater impacts than UCTs, including potential benefits on child development.¹³ Additionally, integration of parenting interventions (including responsive stimulation components) in CCT platforms has demonstrated positive effects on child development in Colombia¹⁷ and Mexico.¹⁸ However, in these studies, the CCT interventions were designed as a component of social protection programme for poor families and were not directly designed to improve child growth and development. To the best of our knowledge, no study has directly targeted small CCTs to the general population of mothers and children in a community with conditionalities to increase access and utilisation of antenatal care and routine child health growth monitoring to potentially promote child growth and development.

We present the primary results from a trial that examined the effect of an integrated CHW-delivered health, nutrition and responsive stimulation intervention alone and in combination with CCTs in rural Tanzania. We hypothesised that the CHW intervention would promote child growth and development through health and nutritional counselling, identification and referral for maternal and child illnesses, provision of early childhood development knowledge, and promotion of caregiver responsiveness and developmentally appropriate play and communication activities. We hypothesised that integrating a CCT with the CHW intervention would increase access and utilisation of antenatal and child health services, including child growth monitoring, treatment of health conditions and other interventions not provided by the CHWs. The CHW and CCT interventions were designed in alignment within the programme and resource constraints in Tanzania to enhance the ability to translate the findings to scale. This proof-of-concept efficacy trial was intended to inform the need and design of larger effectiveness evaluations.

METHODS

Trial design and setting

We conducted a single-blind, cluster-randomised controlled trial of a home-based CHW-delivered health, nutrition and responsive stimulation intervention alone and combined with CCTs to promote antenatal care and routine well-child visits in rural Ifakara, Tanzania. The full trial protocol is detailed elsewhere.¹⁹ This report presents the effect of the interventions on the primary outcomes of the study (endline child development and HAZ), and we also present the secondary anthropometric outcomes of WAZ and weight-for-height z-scores (WHZ). We plan to present the results for all other secondary trial outcomes in forthcoming reports.

The trial was conducted in 12 selected villages in the Ifakara Health Institute Health and Demographic Surveillance System (HDSS) in Kilombero and Ulanga districts in Morogoro Region.²⁰ The Ifakara HDSS area is located approximately 450 km by road from Dar es Salaam and has a population of ~400 000 people. The HDSS area is predominately rural, and most residents are subsistence farmers. A recent study conducted among children 18-36 months of age in the study area found a 16.9% prevalence of low birth weight (<2500 g) and a 36.2% stunting prevalence.²¹

Trial participants

The trial recruited pregnant women and mother/caregiver-infant pairs who lived in the study villages through a house-to-house survey. The inclusion criteria were (1) permanent residence in a study village, (2) pregnant (self-reported) or had a child <1 year of age at the enrolment visit and (3) provided written consent. The exclusion criteria were (1) enrolment in any other clinical trial or intervention study or (2) child with severe

physical or mental impairment. Potential participants were not aware of their village's randomisation arm at the time of seeking consent. In each study village, enrolment continued until all pregnant women and mothers/caregivers with a child <1 year of age were enrolled or until 50 participants were enrolled, whichever was reached first. If the mother had twins, one child was randomly selected for the trial and the same child was assessed at each time point. Written informed consent was obtained from all participants. Participants were referred to clinics at the time of enrolment and during outcome assessment visits if the research assistant identified an emergency maternal or child health issue or if the mother reported immediate risk of self-harm in the depression assessment.

Randomisation and interventions

Village clusters were randomly allocated in a 1:1:1 ratio to one of the three trial arms: (1) CHW, (2) CHW+CCT or (3) control. The full details of the CHW, CHW+CCT and control arms are described in the trial protocol and online supplemental table 1.¹⁹ Briefly, the CHW intervention was the same in the CHW and CHW+CCT arms and therefore the CCT was the only difference between the two intervention arms. The control arm had access to the existing clinic-based maternal and child services (no CHW or CCT). Randomisation was stratified by semiurban (six villages) and rural (six villages) villages to increase the likelihood of baseline balance between arms. Randomisation was done by a non-study statistician using a computer-generated randomisation list with sequence blocks of three.

The same CHW intervention was delivered in the CHW and CHW+CCT arms. CHWs delivered an integrated health, nutrition and responsive stimulation intervention in the home every 4–6 weeks for the trial duration of 18 months. Online supplemental table 1 presents a full description of the CHW intervention.²² Briefly, the trial CHWs received the year-long basic training on the national curriculum by the government before being hired by the project. The national CHW programme was not implemented in the study area during the trial due to resource constraints, and the CHW salaries were paid by the project; the monthly salary for the CHWs was ~600 000 Tanzanian shillings (~\$230). Each CHW was assigned and delivered the intervention to two villages (~100 participants). There was no CHW turnover over the course of the trial and therefore participants received the intervention from the same CHW for the duration of the trial. The CHW intervention included activities and duties of the standardised Tanzanian CHW curriculum with the addition of a responsive stimulation component (online supplemental table 1).¹⁹ The CHW intervention's main maternal and child components included (1) identification and referral for under-5 childhood illness per the Integrated Management of Childhood Illness; (2) antenatal and postnatal pregnancy, delivery and essential newborn care counselling and danger signs identification; (3) family planning; and (4) emergency and

routine referrals to facilities. The CHWs will be assigned to the study villages at the start of the trial. The CHWs provided counselling and referrals but did not directly provide treatments, medicines, nutritional supplements and immunisations or provide child growth monitoring. The Tanzanian government CHW curriculum does not include responsive stimulation or other direct early child development promoting activities. The study team adapted the UNICEF and WHO Care for Child Development package to the local context and provided a 1-week training in September 2017 on the responsive stimulation intervention that included integrated classroom and practical sessions.²³ The responsive care component of the CHW intervention included essential early childhood development knowledge, promotion of caregivers' sensitivity and responsiveness, and promotion of developmentally appropriate play and communication activities, toy making and problem-solving. In addition, caregivers tried responsive stimulation activities with their young child and received feedback and coaching from the CHW. One field coordinator supervised CHWs through biweekly one-on-one meetings with each CHW, a monthly meeting with all CHWs, and monthly home visit spot checks where the field coordinator accompanied CHWs to home visits (~5% of visits).

A CCT intervention was also provided to participants in the CHW+CCT group every 4–6 weeks at the time of the CHW visit. The conditions for the CCT were attendance of routine antenatal care or routine well-child health and growth monitoring clinic visits. The CCT was intended to increase access and utilisation of antenatal and child health services, including child growth monitoring, treatment of health conditions and other interventions not provided by the CHWs. CHWs assessed antenatal care and child health cards at each home visit and provided mothers with cash payments of 10 000 Tanzanian shillings (\$4.30) per antenatal care visit or 5000 Tanzanian shillings (\$2.15) per routine child health and growth monitoring visit that was completed since the last study visit. The average daily income per person for smallholder farmers in Tanzania is US\$1.90.²⁴ CHWs communicated that the CCT payments could be used in any way without penalty, but suggested that mothers use the money for resources to support the health and development of the child.

Assessments and outcomes

Independent fieldworkers who were blinded to the randomised arm conducted home interviews with mothers at enrolment (baseline) and at 18 months after enrolment (endline). The fieldworkers were randomly assigned to villages each survey round and were not to ask participants about the intervention they received. The baseline visit occurred before implementation of the intervention, so it was not possible for the fieldworkers to know the randomised group. Nevertheless, it cannot be ruled out that at the endline visit fieldworkers came to know the intervention status of a household from

conversations with the mother. Standardised questionnaires were administered to collect demographic and socioeconomic data. In addition, the Hopkins Symptom Checklist (HSCL-25) was administered to assess symptoms of depression and anxiety²⁵; symptoms consistent with depression were defined using the Tanzanian validated HSCL-25 cut-off.²⁶ Functional social support was assessed using the Duke University–University of North Carolina Functional Social Support Questionnaire.²⁷ The Caregiver Knowledge of Child Development Inventory (CKCDI) was administered at baseline.²⁸ Child anthropometric measures were taken in triplicate in the home at baseline and endline visit. Child weight was measured to the nearest 100 g using a digital scale (Seca, Hamburg, Germany). Child length (children <24 months of age) was measured to the nearest 0.1 cm using a length board (Seca), and child height was measured to the nearest 0.1 cm using a stadiometer (Seca). Anthropometric z-scores were calculated using the 2006 WHO Child Growth Standards.²⁹ At endline, the fieldworkers administered process evaluations to each group. At endline, fieldworkers travelled outside the study area to conduct interviews and take anthropometric measurements for participants who moved temporarily or permanently outside the study area.

Female research nurses who were blinded to randomisation arm administered a Tanzania-adapted and Swahili-translated version of the Bayley Scales of Infant and Toddler Development, Third Edition (BSID-III).^{30 31} The BSID-III was administered in quiet rooms at two health facilities serving the study area. The BSID-III nurses completed a 3-week BSID-III training led by experts from Boston, USA and completed the BSID-III assessments for a prior research study.³⁰ For participants who moved outside of the study area, BSID-III assessments were not conducted. The two assessors differed in mean BSID-III domain composite scores (online supplemental table 2) and therefore all analyses were adjusted for assessor. However, the BSID-III showed high internal consistency for all domains (Cronbach's alphas ≥ 0.91) in the full sample and separately for each assessor (online supplemental table 3).

Sample size

Sample size calculations were based on randomisation of 12 village clusters, 50 mother/caregiver–child pairs per cluster, a nominal type I error rate of 0.05 and an intracluster correlation of 0.01. We assumed 7.5% fetal loss or child death, 5% loss to follow-up (unknown vital status) and 15% missing data on length-for-age z-score (LAZ). For child development, we originally planned to randomly select 60% of participants to have the BSID-III assessed, of which we assumed 10% would not complete the assessment (resulting in approximately 50%). Based on these assumptions, we had 80% power to detect a standardised mean difference (SMD) of 0.40 in HAZ and 0.53 SD of development z-scores. However, to increase statistical power, we decided to invite all participants

for BSID-III assessment. In a post-hoc power analysis based on the actual number of BSID-III assessments and observed within village correlation, we had 80% power to detect effect sizes of 0.48, 0.86 and 0.46 SD for cognitive, language and motor scores, respectively. The magnitude of the detectable differences for linear growth and development was large; however, this was a proof-of-concept efficacy trial and we hypothesised that there was potential for the intervention package and the combination of CHWs and CCT to provide a relatively large impact on child growth and development.

Statistical analysis

The intention-to-treat (ITT) principle was used for all primary analyses; participants who moved to neighbouring villages were analysed in the village originally randomised. All analyses accounted for clustering by village and urban/rural residence due to the stratified randomisation scheme. Generalised linear regression models were used to assess the effect of the CHW and CHW+CCT interventions on the primary outcomes at endline: BSID-III subscale z-scores and HAZ. BSID-III z-scores were calculated using the internal mean and SD. For the primary minimally adjusted analysis, BSID-III z-scores were adjusted for child age, sex and BSID-III assessor; HAZ similarly adjusted for child age and sex. We also present BSID-III composite scores as a secondary outcome; however, applying US norms for BSID-III scores to children in other settings can result in misclassification and cross-cultural bias.^{32 33} The secondary outcomes of child WAZ, weight-for-length/height z-scores (WHZ), and the number of child health and growth monitoring clinic visits were also assessed using generalised linear models. We did not analyse antenatal care visit attendance by randomised group since only 30% of women were pregnant at baseline and 60% of enrolled pregnant women delivered within 60 days of enrolment. Log-Poisson models were used to examine relative risks of stunting (HAZ < -2), wasting (WHZ < -2), underweight (WAZ < -2) and overweight (WHZ > 2). The Benjamini-Hochberg procedure, which is a preferred method for accounting for multiple testing of correlated outcomes, was used to control for the potential false discovery rate for the eight primary analysis tests.^{34 35} Benjamini-Hochberg procedure-adjusted p values < 0.05 were considered statistically significant.

We conducted sensitivity analyses that (1) adjusted for baseline factors which showed some degree of imbalance between randomisation arms based on $p < 0.20$, and (2) used stabilised inverse probability weights to account for dependent censoring (ie, loss to follow-up).³⁶ We also present the effect estimates collapsing the CHW and CHW+CCT intervention arms. In addition, we explored the potential for effect modification by predefined baseline variables.¹⁹ The statistical significance of interaction was assessed with the likelihood ratio test and we did not adjust for multiple testing. Statistical analyses were performed with Stata V.16.

Table 1 Baseline characteristics of trial participants stratified by randomised arm

	CHW Mean±SD or n (%)	CHW+CCT Mean±SD or n (%)	Control Mean±SD or n (%)
Households/mothers (n)	200	200	193
<i>Household characteristics</i>			
Household size (persons)	4.0±1.7	3.6±2.0	3.4±1.7
House has a dirt floor	85 (42.5)	125 (63.5)	86 (44.6)
Improved sanitation	175 (87.5)	103 (51.5)	123 (63.7)
Poorest wealth quintile	28 (14.0)	50 (25.4)	46 (23.8)
At least one toy in the home	12 (8.3)	20 (23.8)	4 (3.3)
<i>Maternal characteristics at baseline</i>			
Age, years	26.9±5.3	27.0±6.3	26.4±6.1
Married or living with partner	172 (86.0)	167 (83.5)	149 (77.2)
<i>Education</i>			
No formal education	8 (4.0)	36 (18.0)	8 (4.2)
Primary education	179 (89.5)	139 (69.5)	155 (80.3)
Secondary or higher education	13 (6.5)	25 (12.5)	30 (15.5)
Pregnant at time of enrolment	55 (27.5)	75 (37.5)	67 (34.7)
Multiparous	187 (93.5)	179 (89.5)	151 (78.2)
Social support score	2.1±0.4	2.9±0.6	2.9±0.9
Number of stimulation activities in the past 3 days	1.6±1.1	2.2±0.8	2.5±0.7
Caregiver Knowledge of Child Development Inventory score	17.2±4.4	13.8±5.0	15.7±5.2
<i>Infant characteristics at baseline</i>			
Infants (0–1 year at enrolment) (n)	145	125	125
Male	75 (51.7)	70 (56.0)	62 (49.6)
Age, months	5.3±3.6	5.0±3.5	4.6±3.1
Length-for-age z-score	−1.2±2.0	−1.0±1.4	0.2±2.1
Weight-for-length z-score	0.0±1.1	−0.3±1.3	−0.2±1.4
Weight-for-age z-score	0.8±2.2	0.5±1.7	−0.4±2.3

CCT, conditional cash transfer; CHW, community health worker.

RESULTS

Trial recruitment began in September 2017 and endline follow-up activities were completed in May 2019. In the 12 randomised clusters, 593 pregnant women or mother–infant pairs were recruited for participation and were analysed by ITT. There were 50 participants in each of the four CHW and four CHW+CCT villages, resulting in 200 participants in each group. There were 50 participants in two of the control villages and one control village with 47 participants and one with 46 participants, which led to 193 total participants in the control group. Baseline characteristics were relatively comparable across intervention arms, but there was an indication of differences in household wealth, household sanitation, maternal education, parity, social support and CKCDI scores (table 1 and online supplemental table 4). The trial flow diagram is presented in figure 1. The mean child age at endline assessment was 18.9 months (SD: 4.6). At endline anthropometric and BSID-III data were available for 91.5% and

67.7% of randomised participants, respectively. Children with endline anthropometric and BSID-III data were generally comparable at baseline with those without (online supplemental tables 5 and 6). There were no adverse events reported during the trial.

The CHW and CHW+CCT interventions were delivered every 4–6 weeks as expected. The median number of home visits for the CHW arm was 11 (Q1: 9; Q3: 13) and for the CHW+CCT arm was 12 (Q1: 10; Q3: 13). The percentage of the total expected CHW visits completed in the CHW group was 93% and in the CHW+CCT group was 99%. The mean CHW visit duration in both intervention groups was approximately 35 min (mean 34.4±3.3 min in the CHW group and 35.2±3.5 min in the CHW+CCT group). Process indicators and maternal opinions on the CHW and CCT interventions are presented in table 2. Overall, these data suggest that coverage and fidelity of the CHW and CCT interventions were high. Further, we evaluated clinic visit attendance as an important

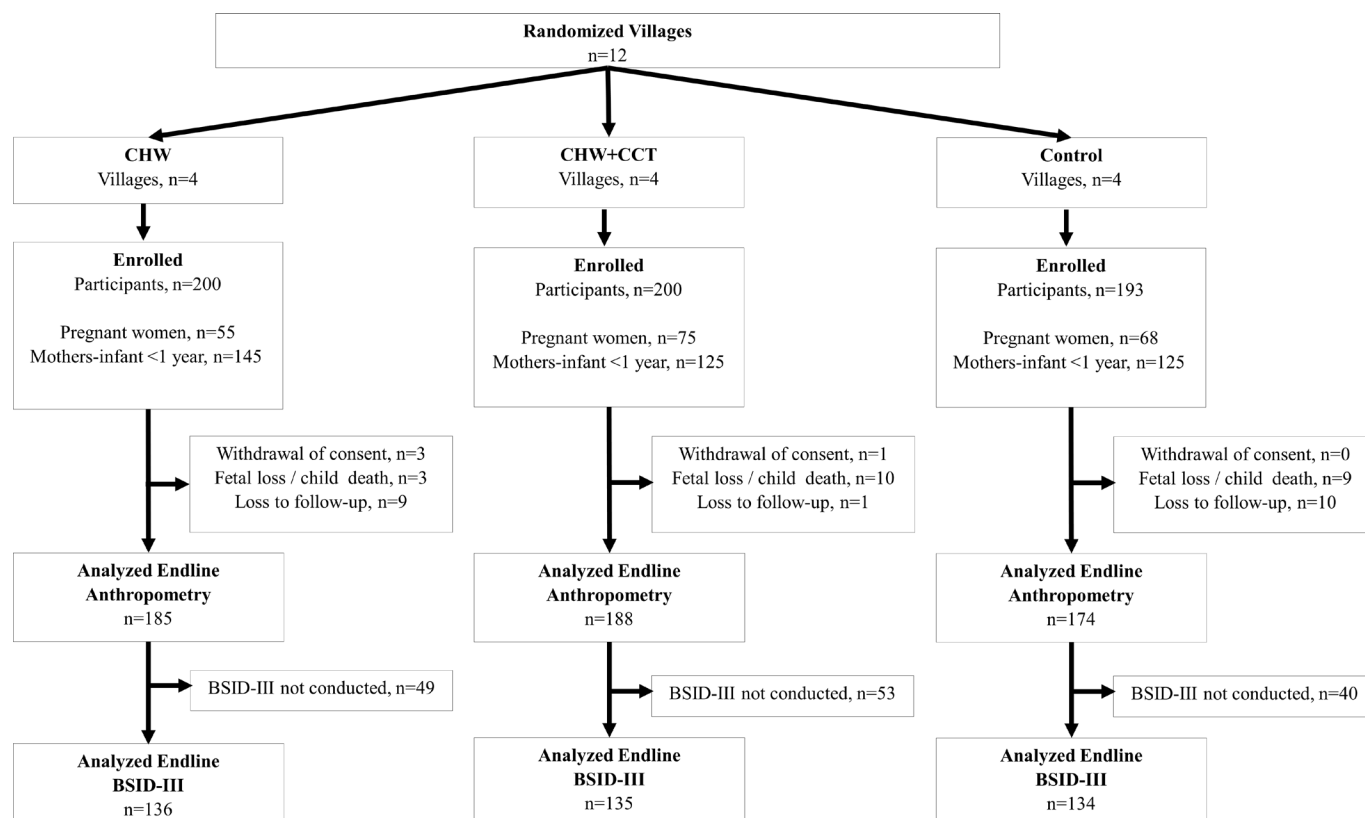


Figure 1 Trial flow diagram stratified by randomised arm. BSID-III, Bayley Scales of Infant and Toddler Development, Third Edition; CCT, conditional cash transfer; CHW, community health worker.

intermediary as it was the condition for the cash transfer. Participants in the CHW+CCT arm attended 3.0 (95% CI 2.1 to 4.0) more child health and growth monitoring clinic visits as compared with control, while participants in the CHW arm attended 1.5 additional clinic visits (95% CI 0.6 to 2.5) (online supplemental table 7).

The CHW and CHW+CCT intervention effects on BSID-III domain scores are presented in table 3. In the primary analysis, both the CHW and CHW+CCT arms had beneficial effects on cognitive development scores and the CHW+CCT arm had positive effects on language and motor scores (Benjamini-Hochberg procedure $p < 0.05$). The effect sizes were similar, and the findings were qualitatively the same in multivariable models that adjusted for potential baseline imbalance (table 3). The results for analyses of BSID-III composite scores were similar to the primary analyses of BSID-III z-scores; the CHW and CHW+CCT arms had beneficial effects on cognitive composite scores and the CHW+CCT arm had positive effects on language and motor composite scores (online supplemental table 8). In addition, the results were materially unchanged in a sensitivity analysis using inverse probability weighting accounting for dependent censoring (online supplemental table 9). In secondary analyses, collapsing the CHW and CHW+CCT arms, there was a positive effect on cognitive scores but no effect on language or motor scores (online supplemental table 10). We also explored potential modifiers of the effect of the interventions on BSID-III scores. The CHW+CCT

intervention appeared to provide greater positive effects on language scores for infants whose mothers had lower baseline CKCDI scores and on motor scores for mothers with less than secondary education (p value for interaction < 0.05) (online supplemental table 11).

The effects of the intervention on child growth are presented in table 4. In the primary analysis, there was no statistically significant effect on HAZ for either the CHW (mean difference HAZ: 0.83, 95% CI -0.56 to 2.22 , Benjamini-Hochberg procedure $p = 0.32$) or CHW+CCT intervention (mean difference HAZ: 1.40 , 95% CI -0.04 to 2.84 , Benjamini-Hochberg procedure $p = 0.09$). However, in multivariable models, there were significant beneficial effects on HAZ in both the CHW and CHW+CCT arms as compared with control. Further, the results were similar in a sensitivity analysis accounting for dependent censoring (online supplemental table 12). Secondary analyses of the collapsed CHW and CHW+CCT arms also found a significant beneficial effect on HAZ in the multivariable model (online supplemental table 13). In exploratory analyses of potential effect modifiers (online supplemental table 14), there was consistent evidence that the magnitude of the positive effects of both the CHW and CHW+CCT interventions on HAZ was greater for women with lower social support (p value for interaction < 0.01). There was also indication that the CHW intervention provided greater benefits on HAZ for mothers with baseline depression and for mothers over 25 years of age as compared with younger mothers (p value for interaction

Table 2 Process indicators and maternal feedback on CHW and CCT interventions

	CHW (n=184) n (%)	CHW+CCT (n=187) n (%)	Control (n=174)
Caregiver recall of receiving messages from CHW			
Child health (ie, prevention/treatment diarrhoea)	183 (99.5)	182 (97.3)	–
Breast feeding/nutrition	168 (91.3)	160 (85.6)	–
Child vaccination	174 (95.1)	128 (68.5)	–
Early child development and responsive stimulation	165 (90.2)	185 (98.9)	–
Maternal feedback on CHW visit frequency (every 4–6 weeks)			
Not frequent enough	37 (20.1)	8 (4.3)	–
About right	145 (78.8)	173 (92.5)	–
Too often	2 (1.1)	6 (3.2)	–
Maternal feedback on CHW counselling duration (35 min on average)			
Too short	2 (1.1)	2 (1.1)	–
About right	171 (92.9)	178 (95.2)	–
Too long	11 (6.0)	7 (3.7)	–
Maternal feedback on number of topics discussed per visit			
Too few	0 (0)	0 (0)	–
About right	175 (95.1)	175 (93.6)	–
Too many	9 (4.9)	12 (6.4)	–
Maternal report of problems trying stimulation activities			
No, none	162 (87.6)	175 (93.1)	–
Yes, not enough time	12 (6.5)	3 (1.6)	–
Yes, no play materials	11 (6.0)	5 (2.7)	–
Yes, other reasons	0 (0)	5 (2.7)	–
Father present at any visit	114 (62.0)	106 (56.7)	–
Discussed CHW intervention with friends or neighbours	137 (85.1)	96 (68.1)	–
<i>CCT intervention indicators</i>			
Reported receiving at least one CCT	–	187 (99.5)	–
CCT primarily used for			
Transport to health clinic	–	10 (5.3)	–
Medical care or medicines for the child	–	1 (0.5)	–
Food for the child or family	–	8 (4.3)	–
Clothes/toys/goods for the baby	–	169 (89.9)	–
Decision-maker for use of CCT funds			
Mother alone	–	181 (96.3)	–
Father alone	–	4 (2.1)	–
Mother and father together	–	3 (1.6)	–

CCT, conditional cash transfer; CHW, community health worker.

<0.05). There was no indication of a difference in the effect of either the CHW or CHW+CCT intervention on HAZ if the mother was pregnant at enrolment or had a child <1 year of age ($p>0.05$). We also conducted a sensitivity analysis that examined the effect of the CHW and CHW+CCT interventions on child growth outcomes among the subgroup of participants who were <1 year at enrolment and additionally adjusted for their baseline HAZ in multivariable models due to potential for baseline imbalance (online supplemental table 15); the positive

effects of both the CHW group (mean difference 0.74, 95% CI 0.05 to 1.42) and the CHW+CCT group (mean difference 1.35; 95% CI 0.67 to 2.03) on HAZ were significant in the multivariable analysis and similar in magnitude to the effect seen in the full trial population.

As for secondary anthropometric outcomes, the CHW arm reduced the risk of underweight and the CHW+CCT intervention reduced the risk of overweight in multivariable models (table 4). The effect CHW on WAZ was greater for mothers ≥ 25 years as compared with those <25

Table 3 Effect of integrated CHW intervention and CHW plus CCT on standardised mean difference in BSID-III scores at 18 months of follow-up

	Primary minimally adjusted analysis*				Multivariable-adjusted analysis†		
	CHW Mean±SD (n=136)	CHW+CCT Mean±SD (n=135)	Control Mean±SD (n=134)	CHW vs control Mean difference (95% CI)	P value‡	CHW+CCT vs control Mean difference (95% CI)	CHW vs control Mean difference (95% CI)
Cognitive	0.10±1.12	0.01±0.85	-0.10±1.01	0.15 (0.05 to 0.24)	0.009	0.18 (0.07 to 0.28)	0.14 (0.05 to 0.22)
Language	0.07±1.06	-0.13±0.93	0.06±1.00	0.04 (-0.06 to 0.14)	0.48	0.08 (0.01 to 0.15)	0.03 (-0.07 to 0.13)
Motor	0.03±1.08	0.04±0.90	-0.07±1.02	0.04 (-0.08 to 0.16)	0.53	0.16 (0.03 to 0.28)	0.04 (-0.08 to 0.16)

*Minimally adjusted model included covariates for child age at assessment, sex and BSID-III assessor and accounted for clustering.

†Multivariate model included covariates for urban/rural residence, baseline household wealth quintile, household having access to an improved latrine, maternal education, parity, social support, CKCDI, child sex, child age at assessment, sex and BSID-III assessor and accounted for clustering.

‡Benjamini-Hochberg procedure-adjusted p values.
BSID-III, Bayley Scales of Infant and Toddler Development, Third Edition; CCT, conditional cash transfer; CHW, community health worker; CKCDI, Caregiver Knowledge of Child Development Inventory.

years, and for participants with poorer household wealth (<50th percentile) as compared with richer households (≥50th percentile) (online supplemental table 14). The effect of CHW+CCT on WAZ appeared larger for women who were pregnant at baseline as compared with those who had a child <1 year at enrolment, participants with poorer household wealth (<50th percentile) as compared with richer households (≥50th percentile), and for mothers with lower social support as compared with higher social support (online supplemental table 14). The effect of CHWs on WHZ was greater for mothers ≥25 years as compared with those <25 years, and for mothers without baseline depression as compared with mothers with baseline depression (online supplemental table 14).

DISCUSSION

In this single-blind, cluster-randomised controlled trial conducted in rural Tanzania, we found that both the CHW and CHW+CCT interventions had beneficial effects on child cognitive development. The CHW+CCT arm also had positive effects on language and motor development. In addition, we found no statistically significant effect of either intervention on child HAZ in the primary analysis; however, both the CHW and CHW+CCT interventions had beneficial effects on HAZ in multivariable analyses.

We found positive effects of the CHW and CHW+CCT interventions on child cognitive development and this finding is in line with evidence on CHW home visit interventions that integrate health, nutrition and responsive stimulation interventions which have generally found moderate positive effects on child development outcomes.⁷ A meta-analysis of 21 such interventions determined positive pooled effect sizes of 0.42 SD and 0.47 SD for cognitive and language development, respectively.^{6 7} The Nurturing Care Framework notes that multiple interrelated components, including healthcare, adequate nutrition, responsive caregiving, opportunities for early learning, and safety and security, create an enabling environment that promotes child growth and development.³⁷ CHW interventions may be able to address each of these components to varying degrees and therefore may provide greater impact on child growth and development than interventions which focus on individual components, such as health, nutrition or stimulation interventions alone. Nevertheless, in our trial, we found relatively small beneficial effects of both the CHW and CHW+CCT interventions on cognitive development scores; however, the magnitude of the effect was only 0.1 SD; the CHW+CCT arm also had similar magnitude effects of 0.1 SD on language and motor scores. One potential explanation for the smaller effect size is that our trial provided a less intensive intervention by design as compared with prior trials and studies. In our study, CHW home visits were conducted every 4–6 weeks for an average of 35 min. Prior trials have found relatively large positive effects with 30–60 min home visits; however, most conducted home visits every 2 weeks or more frequently.⁷ A trial of an integrated responsive stimulation and nutrition intervention implemented in rural Pakistan also conducted monthly

Table 4 Effect of the integrated CHW intervention and CHW plus CCT intervention on anthropometric outcomes at 18 months of follow-up

	Primary minimally adjusted analysis*			Multivariable-adjusted analysis†		
	CHW Mean±SD or n (%) (n=185)	CHW+CCT Mean±SD or n (%) (n=188)	Control Mean±SD n (%) (n=174)	CHW vs control Mean difference or relative risk (95% CI)	CHW+CCT vs control Mean difference or relative risk (95% CI)	CHW+CCT vs control Mean difference or relative risk (95% CI)
Length/height-for-age z-score (HAZ)	-0.86±1.31	-0.26±1.31	-1.65±1.78	0.83 (-0.56 to 2.22)‡	1.40 (-0.04 to 2.84)§	1.16 (0.59 to 1.93)
Stunting (HAZ < -2)	37 (20.2)	19 (10.1)	66 (38.2)	0.49 (0.15 to 1.65)	0.26 (0.08 to 0.86)	0.44 (0.19 to 0.98)
Weight-for-age z-score (WAZ)	0.01±0.91	-0.07±0.93	-0.27±0.98	0.29 (-0.06 to 0.65)	0.22 (-0.11 to 0.55)	0.16 (-0.11 to 0.43)
Underweight (WAZ < -2)	3 (1.6)	5 (2.7)	9 (5.2)	0.26 (0.07 to 0.97)	0.43 (0.12 to 1.53)	0.14 (0.04 to 0.55)
Weight-for-height z-score (WHZ)	0.62±1.28	0.07±1.23	0.78±1.54	-0.17 (-1.08 to 0.74)	-0.69 (-1.68 to 0.29)	-0.68 (-1.14 to -0.21)
Wasting (WHZ < -2)	4 (2.2)	10 (5.3)	6 (3.5)	0.69 (0.15 to 3.08)	1.40 (0.42 to 4.60)	0.99 (0.35 to 2.76)
Overweight (WHZ > 2)	28 (15.2)	10 (5.3)	35 (20.1)	0.73 (0.26 to 2.07)	0.27 (0.06 to 1.187)	0.27 (0.10 to 0.71)

*Minimally adjusted model included child age at assessment and sex and accounted for clustering.

†Multivariate model included covariates for urban/rural residence, baseline household wealth quintile, household having access to an improved latrine, maternal education, parity, social support, CKCDI, child sex and child age at assessment and accounted for clustering.

‡Benjamini-Hochberg procedure-adjusted p value for CHW vs control mean difference in HAZ=0.32.

§Benjamini-Hochberg procedure-adjusted p value for CHW+CCT vs control mean difference in HAZ=0.09.

CCT, conditional cash transfer; CHW, community health worker; CKCDI, Caregiver Knowledge of Child Development Inventory.

home visits and group sessions and found positive effects on child cognitive, language and motor scores at 24 months of age, but the group sessions were almost three times longer at 1 hour and 20 min.³⁸ As a result, combining CHW interventions with group meetings or other supplemental activities that bolster behaviour change may be important to enhance effects. It is also important to note that while the responsive stimulation component of the CHW intervention was designed to directly promote child development, it is possible that the health, nutrition and other support that CHWs provided may have contributed to the positive effects on child development in our trial per the Nurturing Care Framework.³⁷ Prior trials, including the Pakistan trial,³⁸ that compared CHWs with responsive stimulation versus CHWs alone do not capture the potential benefits of CHWs through health, nutrition and other factors.^{6 7} Nevertheless, the effect of CHW and CHW+CCT versus control in our trial was similar, if not smaller, than trials that compared CHW with responsive caregiving with CHWs without responsive caregiving. Additional research is needed to understand the direct and indirect mechanisms through which CHW intervention components may provide an enabling environment for positive effects on child development.

The CHW+CCT arm had similar magnitude of effect on cognitive and language scores relative to the CHW arm (although the effect on language was only statistically significant in the CHW+CCT arm). However, there was some suggestion, although not definitive, that the effect on motor development may be larger for CHW+CCT than CHW alone. In disadvantaged communities, toys and manipulatives that may enhance complex cognitive, language and motor skills are often scarce. Chang *et al* distributed a picture book and a puzzle (key examples of learning materials that support complex developmental skills) at well-child visits to support a health centre-based stimulation programme in Jamaica that found positive effect on child cognitive development.³⁹ In our study, the majority of mothers in the CHW+CCT arm reported that the CCT funds were used directly for goods for the infants, including toys, although social desirability may affect these findings. Several previous interventions encourage making homemade toys or sharing toys in communities over the course of the programme; however, research on provision of toys and manipulatives targeting complex or higher-order skills development in disadvantaged and resource-scarce settings should be pursued alongside supporting responsive caregiver-child interactions and play.

In addition, the CHW and CHW+CCT interventions may have had positive effects on linear growth. It is important to note these positive effects were only statistically significant in multivariable models, and that even though the point estimates indicate large effects the CIs are wide and indicate that moderately small to very large beneficial effects are possible. There are multiple components of the CHW intervention evaluated in our trial that may have contributed to improvements in child linear growth, including nutritional counselling, infection prevention and control, identification and referral for childhood illnesses, promotion of growth

monitoring attendance, and responsive caregiving.^{4 5 40} A recent systematic review determined that CHW home visits increased early initiation of breast feeding and exclusive breast feeding.⁴ Provision of education on complementary feeding has also been shown to increase HAZ by 0.29 SD.⁴⁰ Further, CHW interventions may reduce the incidence of childhood illnesses, including diarrhoea.^{5 41 42} The CHW intervention evaluated in our trial was comprehensive by design and we cannot untangle which components or pathways may have led to improvement in linear growth. It is important to note that CHWs in our trial completed the 1-year Tanzania government-certified CHW training programme, which has significantly longer training duration and is more comprehensive in terms of interventions to be delivered in the home than other CHW programmes, which may have resulted in beneficial effects. We did not find the effect of the CHW or CHW+CCT intervention on growth or development differed for participants who were pregnant at baseline as compared with participants who were mothers and with children <1 year of age at baseline. As a result, it is not clear if providing the interventions in pregnancy and postnatal period is greater than the postnatal period alone.

The CHW+CCT arm appeared to provide beneficial effects on linear growth that were similar in magnitude to the CHW arm in multivariable analyses. Evidence on the effect of cash transfers on child nutritional status is mixed, but there is relatively consistent evidence of positive effects on child diet and morbidity.¹⁵ The framework by Smith and Haddad⁴³ suggests that CCTs may affect child nutritional outcomes through three main pathways of food security, health and access to care. We found that the CHW+CCT intervention increased child clinic visit attendance as compared with control, which is consistent with evidence that cash transfers can be used to increase health service utilisation in LMICs.^{13 44} Nevertheless, there remains a debate on the actual effectiveness of growth monitoring programmes to provide beneficial effects on child growth.⁴⁵ Further, it seems unlikely that the small cash transfers in our trial (US\$4.30 per antenatal care visit and US\$2.15 per monthly child visit) would consistently improve food security. There is some evidence that cash transfers of 15%–25% of the total monthly household income in the context of a social protection programme may provide greater effect on child nutritional outcomes; however, in our trial the relative monthly cash transfers conditioned on clinic visit attendance were <10% of the total monthly household income for subsistence farmers in Tanzania.^{24 46} As a result, additional research is needed to determine the amount and if and which conditionalities for cash transfers may provide beneficial effects on child growth and development.

This study has several important limitations. First, due to the small number of clusters and participant sample size, there was an inherent risk of baseline imbalances. However, multivariable analyses including adjustment for potentially imbalanced factors resulted in similar point estimates to the minimally adjusted models, which suggests low risk of bias due to baseline imbalance. Nevertheless, the SEs and CIs were smaller in multivariable models as compared with minimally adjusted models; in particular, the SEs and CIs were

roughly half the size in the multivariable LAZ/HAZ analysis. It is well documented in randomised trials that adjusting for prognostic baseline covariates that are associated with outcomes of interest can substantially increase statistical power by explaining variation between participants and not bias results^{47 48}; some suggest randomised trials should routinely adjust for prognostic covariates to increase statistical power in the primary analysis.⁴⁹ Second, our analyses of potential effect modifiers, although prespecified, were at risk of type I errors due to multiple testing, and these results should be used for hypothesis generation. Third, BSID-III data were available for 67% of participants and therefore there is a risk of selection bias; however, there appeared to be no difference between children who were assessed versus not assessed for development outcomes. Fourth, the effects of the interventions were evaluated after 18 months of delivery and therefore it is not clear if the impact is sustained later in childhood. Further, we did not have a CCT-only arm and were therefore not able to directly assess interaction between CHW and CCT interventions. In addition, we designed our trial to compare the CHW intervention which included responsive stimulation compared with control (no CHW) to capture the full potential effects of the CHW package on child growth and development, and as a result we are not able to isolate whether the responsive stimulation component provided additional benefit beyond that of the CHW programme alone. Further, we collected data on process indicators for the CHW and CCT interventions, but we did not have data on the counselling and interventions that participants received at each antenatal or child clinic visit and are therefore not able to assess quality of care in the clinics. However, we expect the quality of care to be similar across groups due to randomisation. Given endline data collection was collected 18 months and not every month, it is likely that maternal report of the services provided at each of the multiple clinic visits during the past 18 months would be highly prone to recall bias. Nevertheless, our findings on the effect of the CHW and CHW+CCT interventions are applicable to the current context of clinic care in rural Tanzania and similar settings. Last, in our trial, intervention delivery was carefully monitored and we therefore determined the efficacy of the interventions, and consequently the effectiveness of the intervention in large-scale programmes needs to be evaluated.

CONCLUSIONS

Implementation research is needed to determine how to best integrate responsive stimulation components into CHW programmes considering programmatic constraints that can vary by country, programme and context. Future studies should evaluate the cost-effectiveness of integrating responsive stimulation into CHW programmes at scale. Our study also suggested that there may be beneficial effects of integrating CHWs with CCTs on some outcomes, but additional research on integrated supply-side and demand-side strategies to promote child growth and development is needed.

Acknowledgements We would like to acknowledge the study staff and all the mothers in and for making the study possible.

Contributors CS and HM conceptualised the study. CS, LB, GA, AY and HM developed the intervention and trial protocol. GA coordinated and supervised the data collection. LB and CS conducted the statistical analysis. CS wrote the first draft of the paper. All authors reviewed and contributed to the draft paper. All authors approved the final submission.

Funding This work was supported by Grand Challenges Canada grant number #R-SB-POC-1707-09024. The funder had no involvement in the study design, data collection, analysis or interpretation of the study.

Competing interests None declared.

Patient consent for publication Not required.

Ethics approval The trial protocol was approved by the Ifakara Health Institute IRB (reference number 007–2017), the Tanzanian National Health Research Ethics Sub-Committee (NathREC; reference number NIMR/HQ/R.8a/Vol.IX/2538) and the Harvard TH Chan School of Public Health Institutional Review Board (reference number IRB17–1001).

Provenance and peer review Not commissioned; externally peer reviewed.

Data availability statement Data may be available upon request. Deidentified individual participant data (including data dictionaries) may be made available, in addition to study protocols, the statistical analysis plan and the informed consent form. Data may be made available upon publication to researchers who provide a methodologically sound proposal for use in achieving the goals of the approved proposal and obtain ethical approval. Proposals should be submitted to csudfeld@hsph.harvard.edu.

Supplemental material This content has been supplied by the author(s). It has not been vetted by BMJ Publishing Group Limited (BMJ) and may not have been peer-reviewed. Any opinions or recommendations discussed are solely those of the author(s) and are not endorsed by BMJ. BMJ disclaims all liability and responsibility arising from any reliance placed on the content. Where the content includes any translated material, BMJ does not warrant the accuracy and reliability of the translations (including but not limited to local regulations, clinical guidelines, terminology, drug names and drug dosages), and is not responsible for any error and/or omissions arising from translation and adaptation or otherwise.

Open access This is an open access article distributed in accordance with the Creative Commons Attribution 4.0 Unported (CC BY 4.0) license, which permits others to copy, redistribute, remix, transform and build upon this work for any purpose, provided the original work is properly cited, a link to the licence is given, and indication of whether changes were made. See: <https://creativecommons.org/licenses/by/4.0/>.

ORCID iD

Lilia Bliznashka <http://orcid.org/0000-0003-2084-1141>

REFERENCES

- 1 Richter LM, Daelmans B, Lombardi J, *et al*. Investing in the foundation of sustainable development: pathways to scale up for early childhood development. *Lancet* 2017;389:103–18.
- 2 Engle PL, Fernald LCH, Alderman H, *et al*. Strategies for reducing inequalities and improving developmental outcomes for young children in low-income and middle-income countries. *Lancet* 2011;378:1339–53.
- 3 Ruel MT, Alderman H, Maternal and Child Nutrition Study Group. Nutrition-sensitive interventions and programmes: how can they help to accelerate progress in improving maternal and child nutrition? *Lancet* 2013;382:536–51.
- 4 Lassi ZS, Bhutta ZA. Community-Based intervention packages for reducing maternal and neonatal morbidity and mortality and improving neonatal outcomes. *Cochrane Database Syst Rev* 2015;3:CD007754.
- 5 Lewin S, Munabi-Babigumira S, Glenton C, *et al*. Lay health workers in primary and community health care for maternal and child health and the management of infectious diseases. *Cochrane Database Syst Rev* 2010;3:CD004015.
- 6 About FE, Yousafzai AK. Global health and development in early childhood. *Annu Rev Psychol* 2015;66:433–57.
- 7 Grantham-McGregor SM, Fernald LCH, Kagawa RMC, *et al*. Effects of integrated child development and nutrition interventions

- on child development and nutritional status. *Ann N Y Acad Sci* 2014;1308:11–32.
- 8 Prado EL, Larson LM, Cox K, *et al.* Do effects of early life interventions on linear growth correspond to effects on neurobehavioural development? A systematic review and meta-analysis. *Lancet Glob Health* 2019;7:e1398–413.
 - 9 Singla DR, Kumbakumba E, Aboud FE. Effects of a parenting intervention to address maternal psychological wellbeing and child development and growth in rural Uganda: a community-based, cluster randomised trial. *Lancet Glob Health* 2015;3:e458–69.
 - 10 Boivin MJ, Nakasujja N, Familiar-Lopez I, *et al.* Effect of caregiver training on the neurodevelopment of HIV-exposed uninfected children and caregiver mental health: a Ugandan cluster-randomized controlled trial. *J Dev Behav Pediatr* 2017;38:753–64.
 - 11 Potterton J, Stewart A, Cooper P, *et al.* The effect of a basic home stimulation programme on the development of young children infected with HIV. *Dev Med Child Neurol* 2010;52:547–51.
 - 12 Janmohamed A, Sohani N, Lassi ZS, *et al.* The effects of community home visit and peer group nutrition intervention delivery platforms on nutrition outcomes in low and middle-income countries: a systematic review and meta-analysis. *Nutrients* 2020;12. doi:10.3390/nu12020440. [Epub ahead of print: 10 Feb 2020].
 - 13 De Walque D, Fernald L, Gertler P. *Cash transfers and child and adolescent development. child and adolescent health and development.* Washington (DC): The International Bank for Reconstruction and Development/The World Bank, 2017.
 - 14 Owusu-Addo E, Cross R. The impact of conditional cash transfers on child health in low- and middle-income countries: a systematic review. *Int J Public Health* 2014;59:609–18.
 - 15 de Groot R, Palermo T, Handa S, *et al.* Cash transfers and child nutrition: pathways and impacts. *Dev Policy Rev* 2017;35:621–43.
 - 16 Manley J, Gitter S, Slavchevska V. How effective are cash transfers at improving nutritional status? *World Dev* 2013;48:133–55.
 - 17 Attanasio OP, Fernández C, Fitzsimons EOA, *et al.* Using the infrastructure of a conditional cash transfer program to deliver a scalable integrated early child development program in Colombia: cluster randomized controlled trial. *BMJ* 2014;349:g5785.
 - 18 Fernald LCH, Kagawa RMC, Knauer HA, *et al.* Promoting child development through group-based parent support within a cash transfer program: experimental effects on children's outcomes. *Dev Psychol* 2017;53:222–36.
 - 19 Sudfeld CR, Bliznashka L, Ashery G, *et al.* Effect of a community health worker delivered health, nutrition and responsive stimulation package and conditional cash transfers on child development and growth in rural Tanzania: protocol for a cluster-randomized trial. *BMC Public Health* 2019;19:641.
 - 20 Geubbels E, Amri S, Levira F, *et al.* Health & Demographic Surveillance System Profile: The Ifakara Rural and Urban Health and Demographic Surveillance System (Ifakara HDSS). *Int J Epidemiol* 2015;44:848–61.
 - 21 Sudfeld CR, McCoy DC, Fink G, *et al.* Malnutrition and its determinants are associated with suboptimal cognitive, communication, and motor development in Tanzanian children. *J Nutr* 2015;145:2705–14.
 - 22 Hoffmann TC, Glasziou PP, Boutron I, *et al.* Better reporting of interventions: template for intervention description and replication (TIDieR) checklist and guide. *BMJ* 2014;348:g1687.
 - 23 World Health Organization and UNICEF. *Care for child development: improving the care of young children.* Geneva: World Health Organization, 2012.
 - 24 Rapsomanikis G. *The economic lives of smallholder farmers: an analysis based on household data from nine countries.* Rome: Food and Agriculture Organization of the United Nations, 2015.
 - 25 Derogatis LR, Lipman RS, Rickels K, *et al.* The Hopkins symptom checklist (HSCL): a self-report symptom inventory. *Behav Sci* 1974;19:1–15.
 - 26 Kaaya SF, Fawzi MCS, Mbwambo JK, *et al.* Validity of the Hopkins symptom Checklist-25 amongst HIV-positive pregnant women in Tanzania. *Acta Psychiatr Scand* 2002;106:9–19.
 - 27 Broadhead WE, Gehlbach SH, de Gruy FV, *et al.* The Duke-UNC functional social support questionnaire. Measurement of social support in family medicine patients. *Med Care* 1988;26:709–23.
 - 28 Ertem IO, Atay G, Dogan DG, *et al.* Mothers' knowledge of young child development in a developing country. *Child Care Health Dev* 2007;33:728–37.
 - 29 WHO Multicentre Growth Reference Study Group. Who child growth standards based on length/height, weight and age. *Acta Paediatr Suppl* 2006;450:76–85.
 - 30 Sudfeld CR, McCoy DC, Fink G, *et al.* Malnutrition and its determinants are associated with suboptimal cognitive, communication, and motor development in Tanzanian children. *J Nutr* 2015;145:2705–14.
 - 31 Bayley N. *Bayley scales of infant and toddler development.* San Antonio, TX: NCS Pearson, 2006.
 - 32 Cromwell EA, Dube Q, Cole SR, *et al.* Validity of US norms for the Bayley scales of infant Development-III in Malawian children. *Eur J Paediatr Neurol* 2014;18:223–30.
 - 33 Geisinger KF. Cross-Cultural normative assessment: translation and adaptation issues influencing the normative interpretation of assessment instruments. *Psychol Assess* 1994;6:304–12.
 - 34 Benjamini Y, Hochberg Y. Controlling the false discovery rate: a practical and powerful approach to multiple testing. *J R Stat Soc Series B* 1995;57:289–300.
 - 35 Blakesley RE, Mazumdar S, Dew MA, *et al.* Comparisons of methods for multiple hypothesis testing in neuropsychological research. *Neuropsychology* 2009;23:255–64.
 - 36 Seaman SR, White IR. Review of inverse probability weighting for dealing with missing data. *Stat Methods Med Res* 2013;22:278–95.
 - 37 World Health Organization. *Nurturing care for early childhood development: a framework for helping children survive and thrive to transform health and human potential* 2018.
 - 38 Yousafzai AK, Rasheed MA, Rizvi A, *et al.* Effect of integrated responsive stimulation and nutrition interventions in the lady health worker programme in Pakistan on child development, growth, and health outcomes: a cluster-randomised factorial effectiveness trial. *Lancet* 2014;384:1282–93.
 - 39 Chang SM, Grantham-McGregor SM, Powell CA, *et al.* Integrating a parenting intervention with routine primary health care: a cluster randomized trial. *Pediatrics* 2015;136:272–80.
 - 40 Lassi ZS, Rind F, Irfan O, *et al.* Impact of infant and young child feeding (IYCF) nutrition interventions on breastfeeding practices, growth and mortality in low- and middle-income countries: systematic review. *Nutrients* 2020;12:722.
 - 41 Ma Y, Sudfeld CR, Kim H, *et al.* Evaluating the impact of community health volunteer home visits on child diarrhea and fever in the Volta region, Ghana: a cluster-randomized controlled trial. *PLoS Med* 2019;16:e1002830.
 - 42 Lewycka S, Mwansambo C, Rosato M, *et al.* Effect of women's groups and volunteer peer counselling on rates of mortality, morbidity, and health behaviours in mothers and children in rural Malawi (MaiMwana): a factorial, cluster-randomised controlled trial. *The Lancet* 2013;381:1721–35.
 - 43 Smith LC, Haddad L. How potent is economic growth in reducing undernutrition? what are the pathways of impact? new Cross-Country evidence. *Econ Dev Cult Change* 2002;51:55–76.
 - 44 Lagarde M, Haines A, Palmer N. The impact of conditional cash transfers on health outcomes and use of health services in low and middle income countries. *Cochrane Database Syst Rev* 2009;4:CD008137.
 - 45 Garner P, Panpanich R, Logan S. Is routine growth monitoring effective? A systematic review of trials. *Arch Dis Child* 2000;82:197–201.
 - 46 Leroy JL, Ruel M, Verhofstadt E. The impact of conditional cash transfer programmes on child nutrition: a review of evidence using a programme theory framework. *J Dev Effect* 2009;1:103–29.
 - 47 Pocock SJ, Assmann SE, Enos LE, *et al.* Subgroup analysis, covariate adjustment and baseline comparisons in clinical trial reporting: current practice and problems. *Stat Med* 2002;21:2917–30.
 - 48 Hernández AV, Steyerberg EW, Butcher I, *et al.* Adjustment for strong predictors of outcome in traumatic brain injury trials: 25% reduction in sample size requirements in the IMPACT study. *J Neurotrauma* 2006;23:1295–303.
 - 49 Kahan BC, Jairath V, Doré CJ, *et al.* The risks and rewards of covariate adjustment in randomized trials: an assessment of 12 outcomes from 8 studies. *Trials* 2014;15:139.